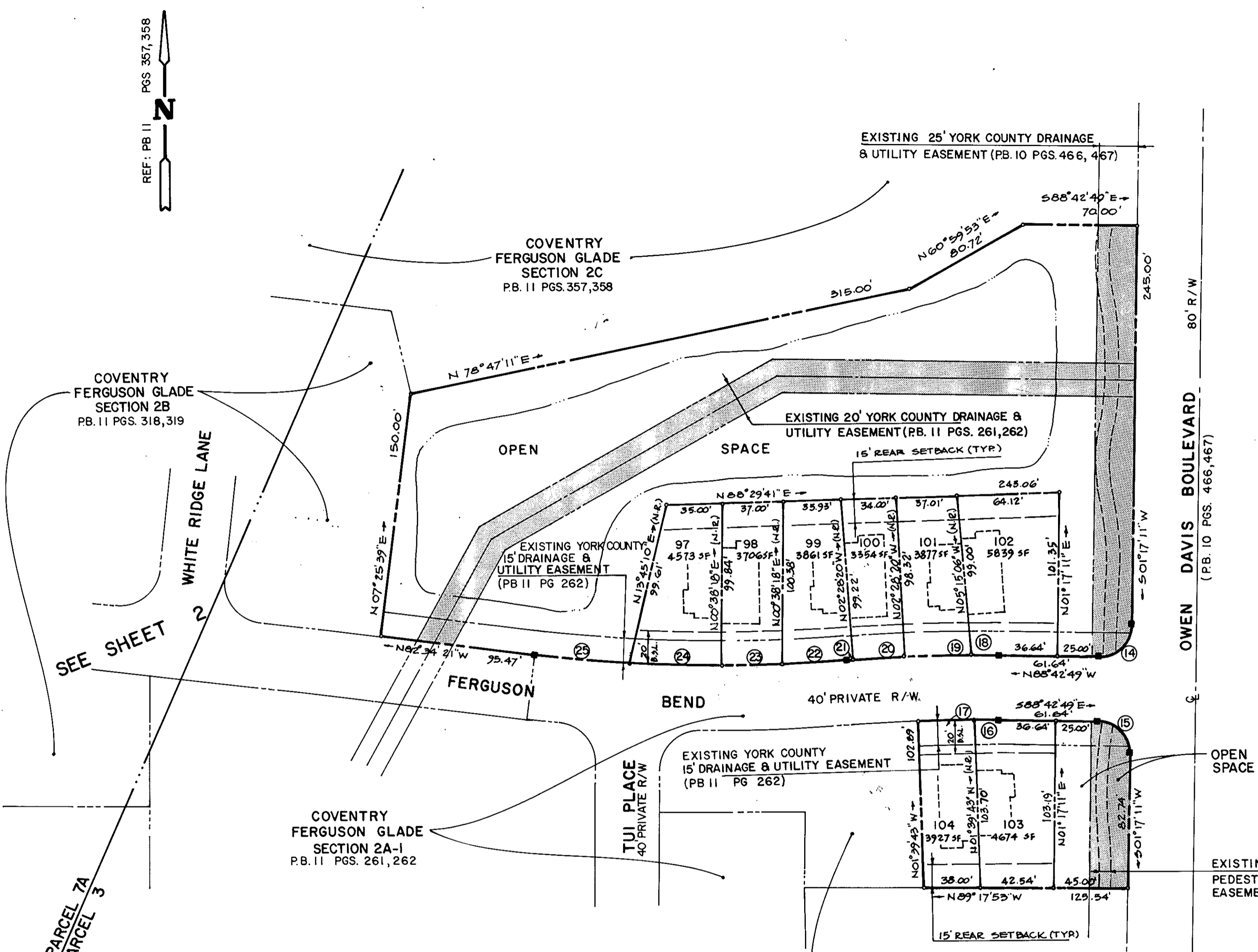
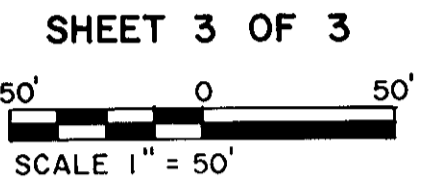


RECORD PLAT  
 COVENTRY PLANNED DEVELOPMENT  
 FERGUSON GLADE  
 SECTION 2D

COUNTY OF YORK, VIRGINIA  
 LOUIS M. PENCI, Inc.  
 863 Catalina Drive  
 Newport News, Virginia 23602

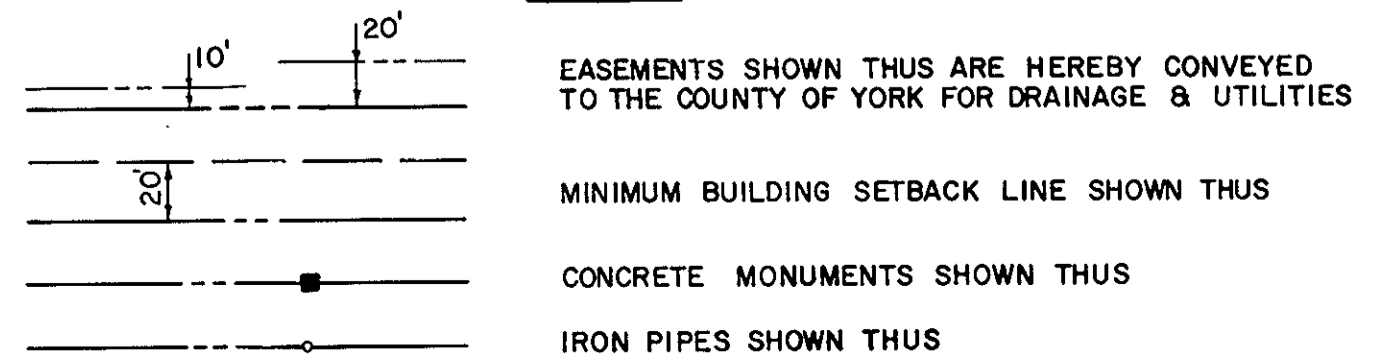
SCALE: 1" = 50' FEBRUARY 4, 1992



CURVE DATA

	DELTA	RADIUS	LENGTH	TANGENT	CHORD BEARING	CHORD DIST.
14	90° 00' 00"	20.00'	31.42'	20.00'	S 46° 17' 11" W	28.28'
15	90° 00' 00"	20.00'	31.42'	20.00'	S 43° 42' 49" E	28.28'
16	00° 20' 41"	956.22'	11.23'	5.61'	S 89° 03' 00" E	11.23'
17	02° 16' 33"	956.22'	37.98'	18.99'	N 89° 28' 33" E	37.98'
18	00° 55' 41"	996.22'	16.14'	8.07'	N 89° 10' 40" W	16.14'
19	02° 24' 20"	996.22'	41.82'	20.92'	S 89° 09' 20" W	41.82'
20	01° 57' 19"	996.22'	34.00'	17.00'	S 86° 58' 30" W	34.00'
21	00° 07' 53"	996.22'	2.28'	1.14'	S 85° 55' 54" W	2.28'
22	02° 20' 33"	956.22'	39.09'	19.55'	S 87° 02' 15" W	39.09'
23	02° 12' 58"	956.22'	36.99'	18.50'	S 89° 19' 00" W	36.99'
24	03° 27' 05"	956.22'	57.60'	28.81'	N 87° 50' 58" W	57.59'
25	03° 33' 05"	956.22'	59.27'	29.64'	N 84° 20' 53" W	59.26'

LEGEND



APPROVED  
 YORK COUNTY BOARD OF SUPERVISORS

By: [Signature]  
 PLAT APPROVING AGENT

Date: SEPT 29, 1992

STATE OF VIRGINIA  
 COUNTY OF YORK

IN THE CLERK'S OFFICE OF THE CIRCUIT COURT FOR THE COUNTY OF YORK THE 29th DAY OF Sept 1992 THIS MAP WAS PRESENTED AND ADMITTED TO RECORD AS THE LAW DIRECTS IN PLAT BOOK 11, PAGE 538

TESTE: NANCY B. KANE, CLERK  
 CLERK

BY: [Signature]  
 D.C.