

PLAT OF CONDOMINIUM
**EAGLE SOUND
 AT KILN CREEK**
 A CONDOMINIUM
 PHASE EIGHT
 THE VILLAGES OF KILN CREEK
 COUNTY OF YORK, VIRGINIA

DATE: JULY 23, 1992 SHEET 2 OF 2 SCALE: 1" = 50'

SRA SLEDD, RUNEY & ASSOCIATES, P.C.
 ENGINEERS PLANNERS SURVEYORS
 11832 ROCK LANDING DRIVE, SUITE 203
 NEWPORT NEWS, VIRGINIA 23606
 (804) 873-3386

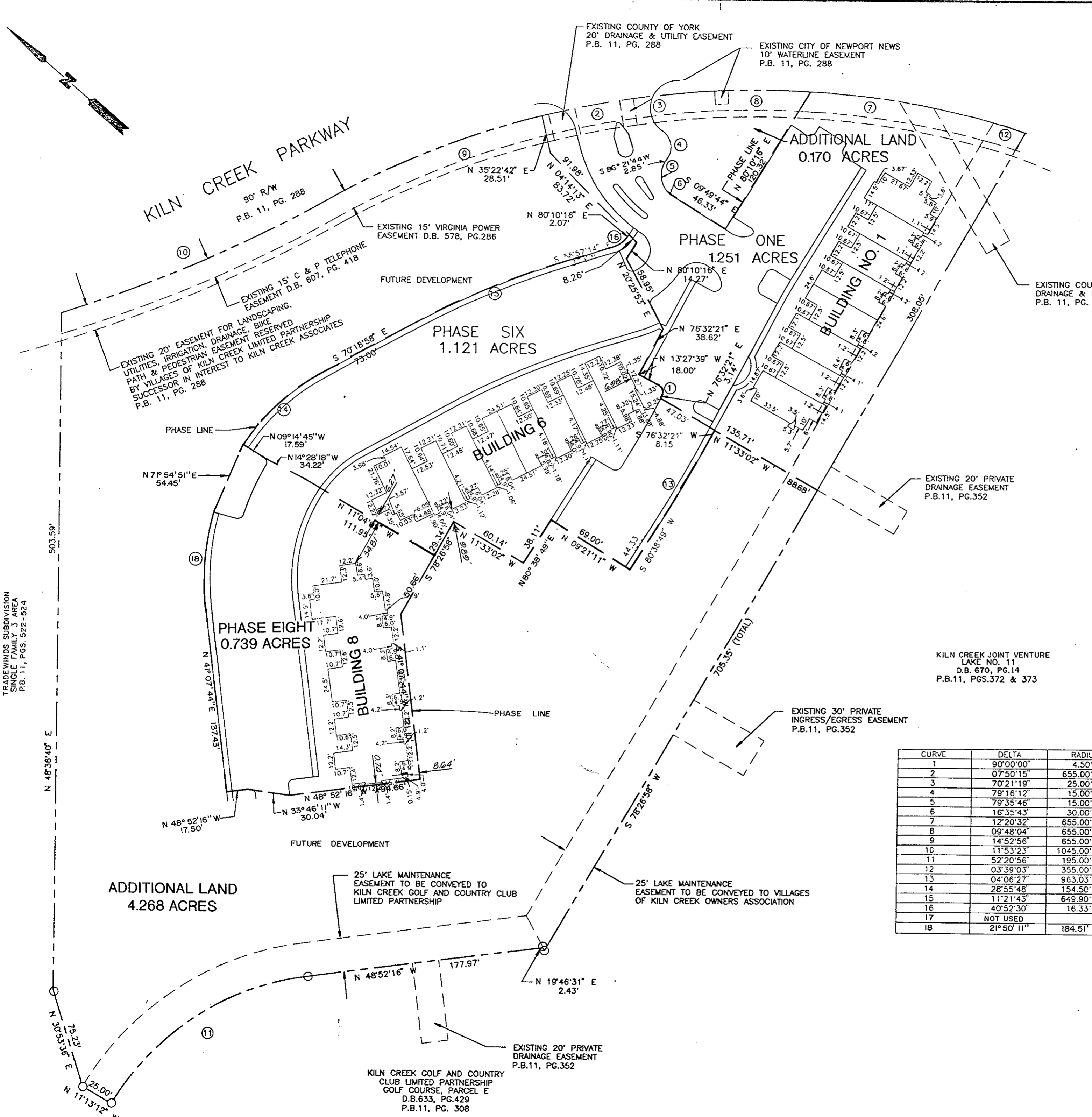


EXHIBIT A-3

AREA TABULATIONS

PHASE 1	1.251 AC.
PHASE 6	1.121 AC.
PHASE 8	0.739 AC.
ADDITIONAL LAND	4.438 AC.
TOTAL AREA OF SITE	7.549 AC.

PARKING TABULATIONS

139 TOTAL SPACES

CURVE DATA TABLE

CURVE	DELTA	RADIUS	LENGTH	TANGENT	CHORD	BEARING
1	90°00'00"	4.50'	4.50'	4.50'	6.36'	N 31°32'21" E
2	07°50'15"	655.00'	89.60'	44.87'	89.53'	S 52°00'55" E
3	70°21'19"	25.00'	30.70'	17.62'	28.81'	S 42°16'12" W
4	79°16'12"	15.00'	20.75'	12.42'	19.14'	N 46°43'39" E
5	79°35'46"	15.00'	20.84'	12.50'	19.20'	S 46°33'51" W
6	16°35'43"	30.00'	8.69'	4.38'	8.66'	S 01°35'01" E
7	12°20'32"	655.00'	141.10'	70.82'	140.82'	N 32°07'27" W
8	09°48'04"	655.00'	112.05'	56.16'	111.91'	S 43°11'45" E
9	14°52'56"	655.00'	170.13'	85.55'	169.65'	N 63°22'30" W
10	11°53'23"	1045.00'	216.85'	108.82'	216.46'	S 64°52'16" E
11	52°20'56"	195.00'	178.16'	95.84'	172.03'	N 75°02'44" W
12	03°39'03"	355.00'	22.62'	11.31'	22.62'	S 24°07'40" E
13	04°06'27"	963.03'	69.04'	34.54'	69.03'	N 78°35'35" E
14	28°55'48"	154.50'	78.01'	39.86'	77.18'	N 84°46'51" W
15	11°21'43"	649.90'	128.88'	64.65'	128.67'	N 64°38'06" W
16	40°52'30"	16.33'	11.65'	6.09'	11.41'	S 79°23'29" E
17	NOT USED					
18	21°50'11"	184.51'	70.32'	35.59'	69.89'	N 52°29'43" E

STATE OF VIRGINIA
 COUNTY OF YORK

IN THE CLERK'S OFFICE OF THE CIRCUIT COURT FOR THE COUNTY OF YORK, THE 18th DAY OF December, 1992
 THIS MAP WAS PRESENTED AND ADMITTED TO RECORD AS THE LAW DIRECTS IN PLAT BOOK 11, PAGE 554.

TESTE: NANCY B. KANE, CLERK
 CLERK

BY: Karen Kelly Watkins, P.C.

12:33 am