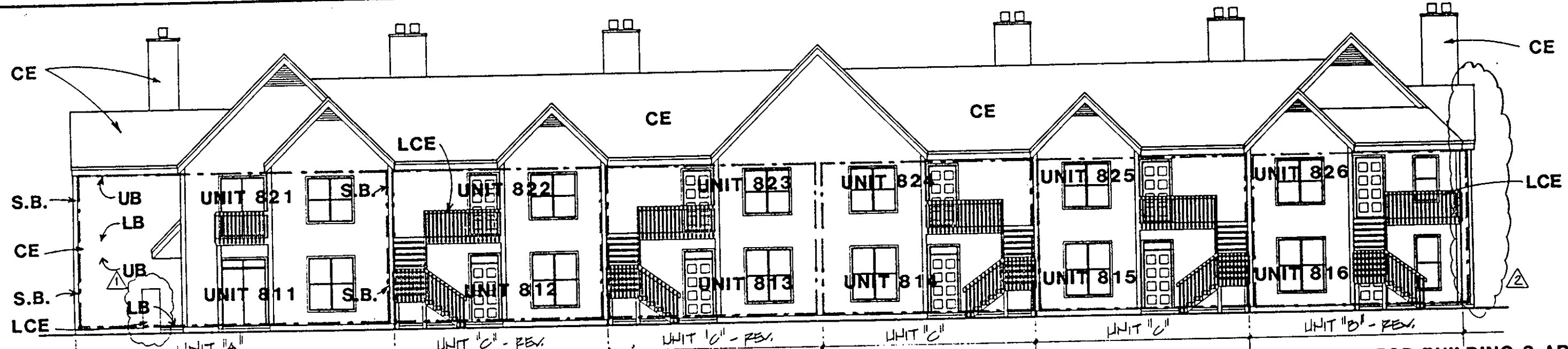
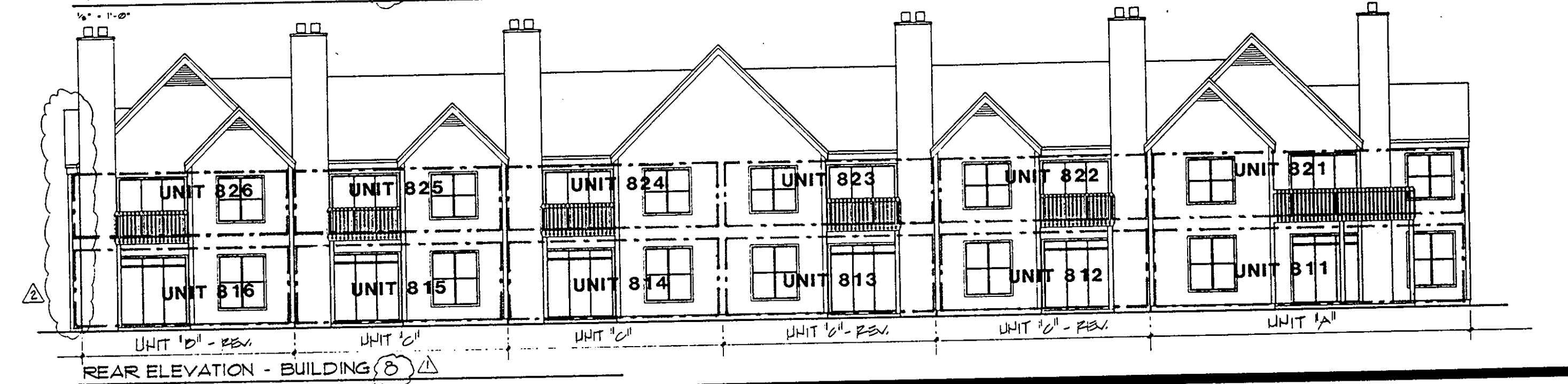


Plat Book No. 11 Page 558
 Filed in the Clerk's Office, Circuit Court, York Co., Va.
 the 18th day of December, 1992
 at 8:33 Am
 Teste: Nancy B. Kane, Clerk
Kenneth K. Williams D.C.

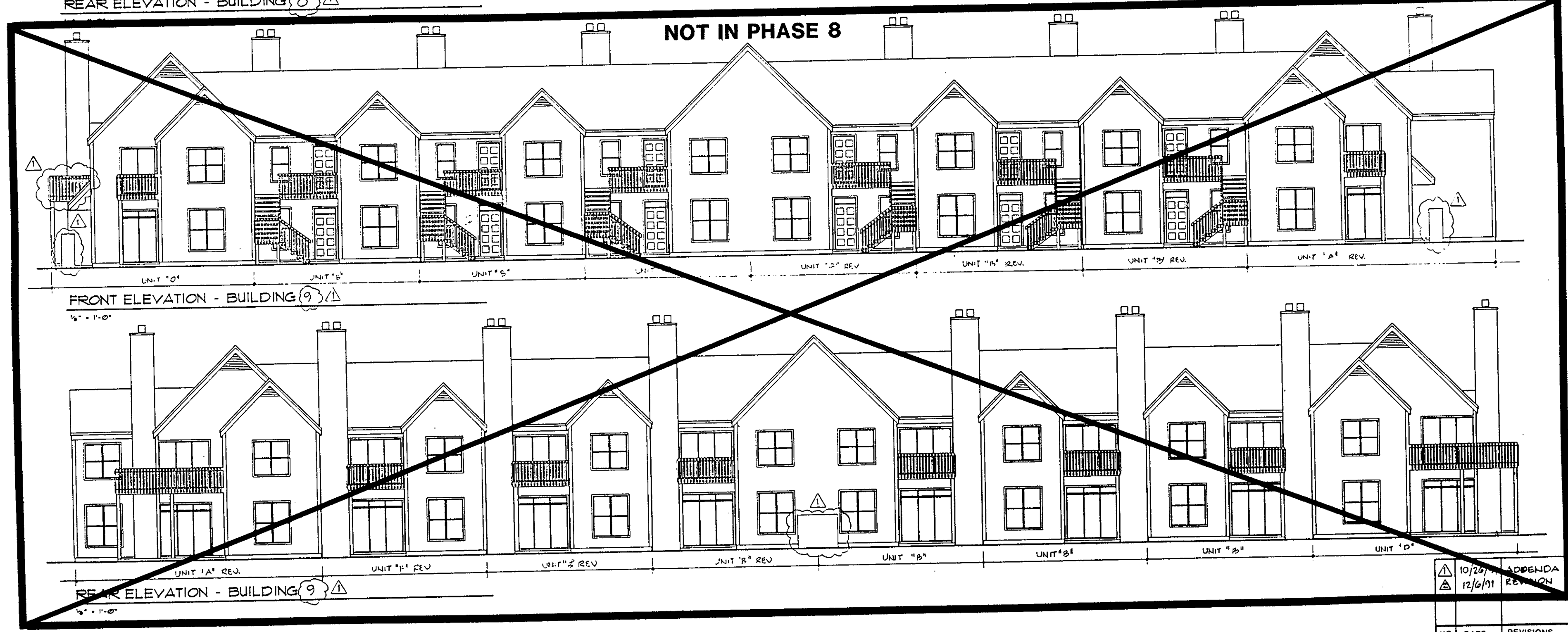
ARCHITECT'S CERTIFICATE
 I hereby certify that this is a correct and accurate plan, that this plan is in compliance with Virginia Code Ann. Subsections 55-79.58 (b) and (e), and that the units depicted hereon have been substantially completed.
Robert A. Magnoth III, AIA
 Date 12/17/92



NOTE: BOUNDARY AND COMMON ELEMENT DESIGNATIONS SHOWN FOR BUILDING 8 ARE TYPICAL FOR ALL ELEVATIONS



LEGEND:
 S.B. - SIDE (PERIMETER) BOUNDARY
 L.B. - LOWER BOUNDARY
 U.B. - UPPER BOUNDARY
 CE - COMMON ELEMENT
 LCE - LIMITED COMMON ELEMENT



10/20/92	APPENDIX
12/6/92	REVISION

NO	DATE	REVISIONS	BY

WILLIAMS, TAZEWELL AND ASSOCIATES
 Architecture Engineering Planning Interiors
 710 West 21st Street,
 Norfolk, Virginia 23517

Plat of Condominium
 EAGLE SOUND AT KILN CREEK
 YORK COUNTY, VIRGINIA

EXHIBIT
 A-3
 PHASE
 EIGHT

File
 9146.01A
 Date

Sheet
 4 OF 5