

WILLIAMS, TAZEWELL, AND ASSOCIATES  
 Architecture Engineering Planning Interiors  
 710 West 21st Street, Norfolk, Virginia 23517

BUILDING 7

Units listed below will be addressed as follows:  
 (Insert Unit #) Ironwood Drive

Unit No.	Lower Boundary Elevation*	Upper Boundary Elevation**
711	34.7	Varies 42.74-43.65
712	34.7	Varies 42.74-43.65
713	34.7	Varies 42.74-43.65
714	34.7	Varies 42.74-43.65
715	34.7	Varies 42.74-43.65
716	34.7	Varies 42.74-43.65
721	45.08	Varies 53.14-55.14
722	45.08	Varies 53.14-55.14
723	45.08	Varies 53.14-55.14
724	45.08	Varies 53.14-55.14
725	45.08	Varies 53.14-55.14
726	45.08	Varies 53.14-55.14

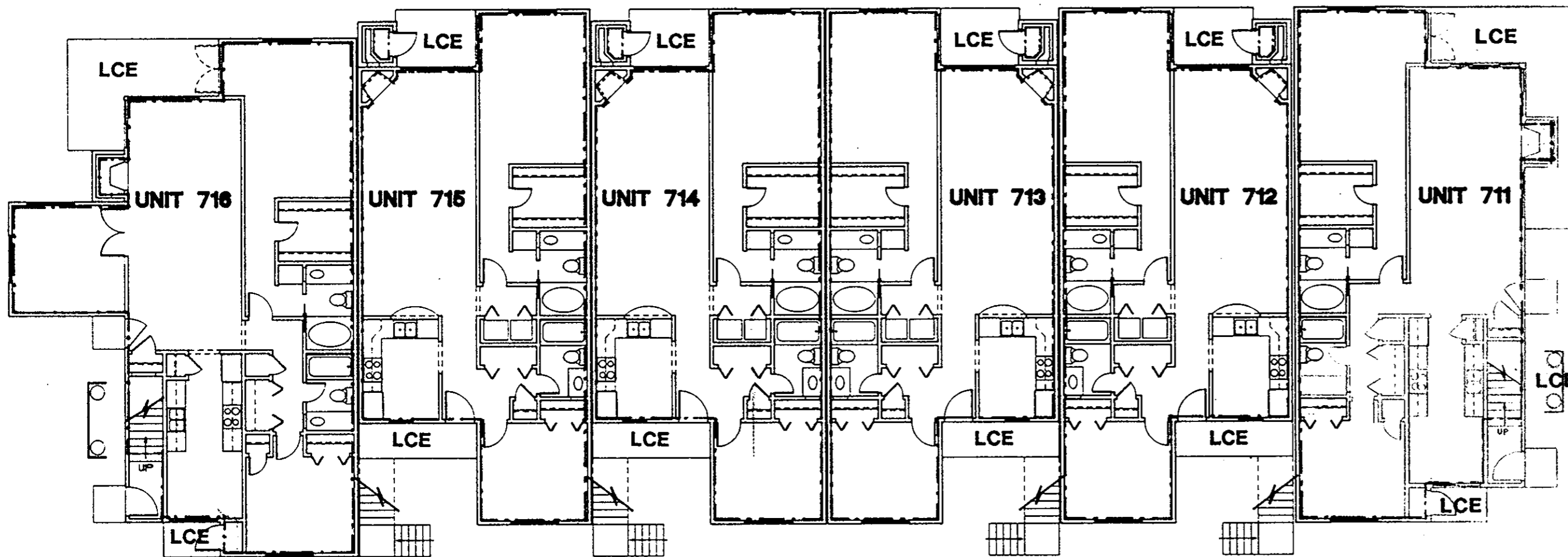
\* Note: The numerical value given as the lower boundary of each unit is the elevation of the horizontal plane of the upper surface of the gypsum-concrete floor topping of the unit.

\*\* Note: The numerical value given as the upper boundary of each unit is the elevation of the horizontal plane(s) of the upper (covered) surface of the gypsum board (or other material) constituting the exposed ceiling of the unit.

ARCHITECT'S CERTIFICATE

I hereby certify that this is a correct and accurate plan, that this plan is in compliance with Virginia Code Ann. Subsections 55-79.58 (b) and (e), and that the units depicted hereon have been substantially completed.

*[Signature]*  
 Robert A. Magoon Jr., AIA  
 Date: 8/18/83



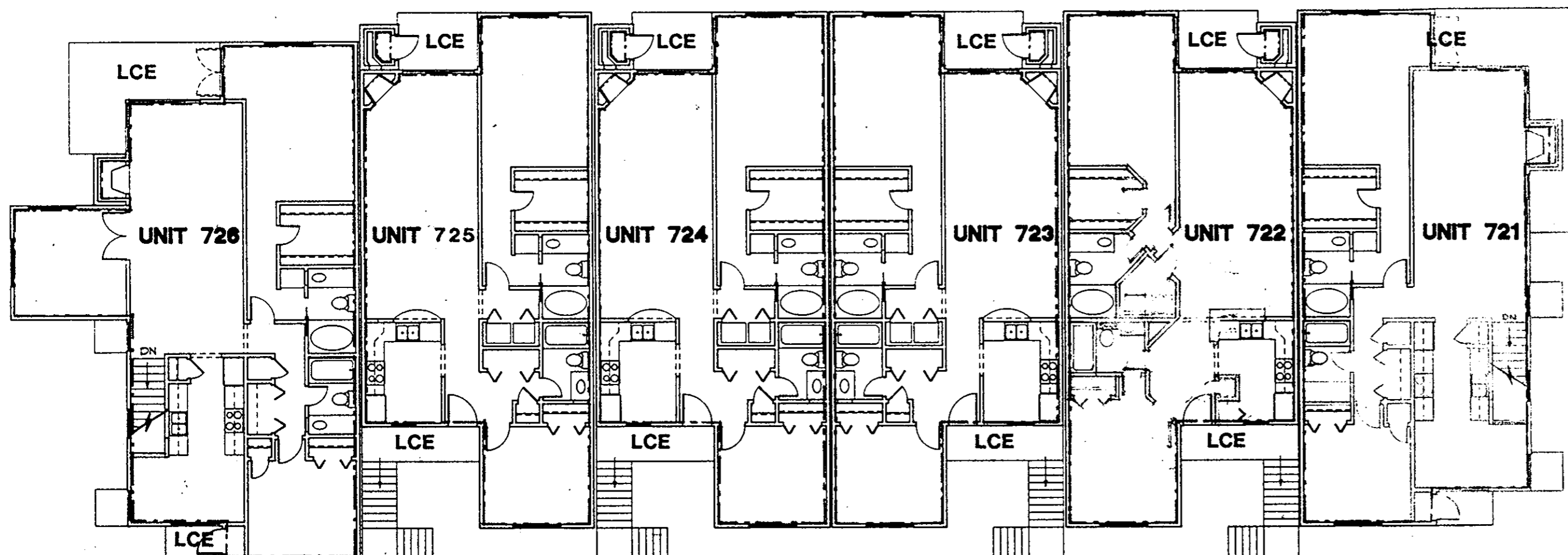
1ST FLOOR PLAN - BUILDING 7 UNITS 711-716

NOTE:

SEE UNIT FLOOR PLANS FOR MORE DETAILED BOUNDARY AND COMMON ELEMENT INFORMATION

LEGEND:

S.B. - SIDE (PERIMETER) BOUNDARY  
 LCE - LIMITED COMMON ELEMENT  
 CE - COMMON ELEMENT



2ND FLOOR PLAN - BUILDING 7 UNITS 721-726

Plat Book No. 11 Page 646

Filed in the Clerk's Office, Circuit Court, York Co., Va. the 24 day of August 1983

Teste:

*[Signature]* Nancy B. Kane, Clerk  
 D.C.

Plat of Condominium  
 EAGLE SOUND AT KILN CREEK  
 YORK COUNTY, VIRGINIA

EXHIBIT A-3  
 PHASE SEVEN

File  
 Date  
 Sheet

NO.	DATE	REVISIONS	BY