

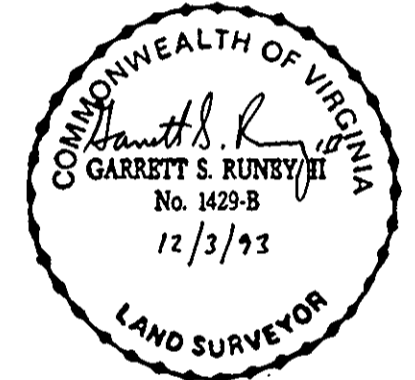
PLAT OF SUBDIVISION  
**YORKSHIRE DOWNS**  
**PHASE 4**  
 SECTION A

COUNTY OF YORK, VIRGINIA

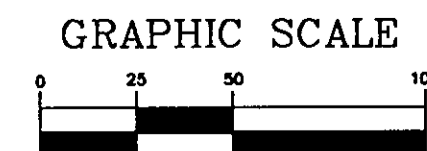
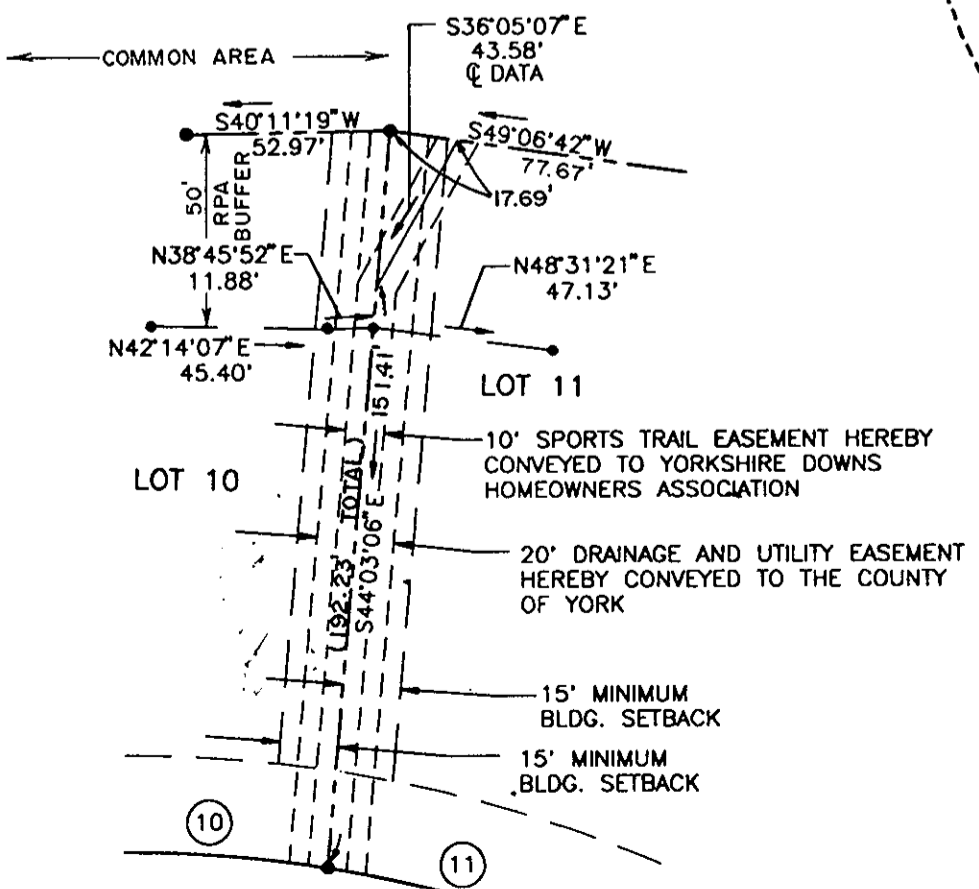
DATE: JULY 31, 1993 SHEET 4 OF 4 SCALE: 1"=50'



**SLEDD, RUNEY & ASSOCIATES, P.C.**  
 ENGINEERS PLANNERS SURVEYORS  
 11832 ROCK LANDING DRIVE, SUITE 203  
 NEWPORT NEWS, VIRGINIA 23606  
 (804) 873-3386



OTHER PROPERTY OF SHADY BANKS ASSOCIATES A VIRGINIA CORPORATION D.B.720, PG.693



APPROVED:  
 YORK COUNTY BOARD OF SUPERVISORS  
 BY: *John Carter*  
 PLAT APPROVING AGENT  
 DATE: January 25, 1994

STATE OF VIRGINIA  
 COUNTY OF YORK  
 IN THE CLERK'S OFFICE OF THE CIRCUIT COURT FOR THE COUNTY OF YORK, THE 27th DAY OF January 1994.  
 THIS MAP WAS PRESENTED AND ADMITTED TO RECORD AS THE LAW DIRECTS IN PLAT BOOK 12, PAGE 4.

TESTE: NANCY B. KANE, CLERK  
 CLERK  
 BY: *Catherine B. ...*