

42
SIGHT EASEMENTS AT EACH STREET INTERSECTION, AS SHOWN ON THIS PLAT, ARE HEREBY CONVEYED TO YORK COUNTY, PURSUANT TO THE PROVISIONS OF SECTION 20.5-101, YORK COUNTY CODE. NO SIGN, PLANTING, STRUCTURES OR OTHER OBSTRUCTIONS WHICH OBSCURE OR IMPEDE SIGHT LINES BETWEEN THREE (3) FEET AND SIX (6) FEET IN HEIGHT SHALL BE ALLOWED WITHIN THESE SIGHT EASEMENT AREAS. THE COUNTY SHALL HAVE THE RIGHT AT ANY TIME TO ENTER INTO THE SIGHT EASEMENT AREAS TO REMOVE ANY OBJECT, MATERIAL OR OTHER OBSTRUCTION THAT HINDERS CLEAR SIGHT ACROSS THE AREA.

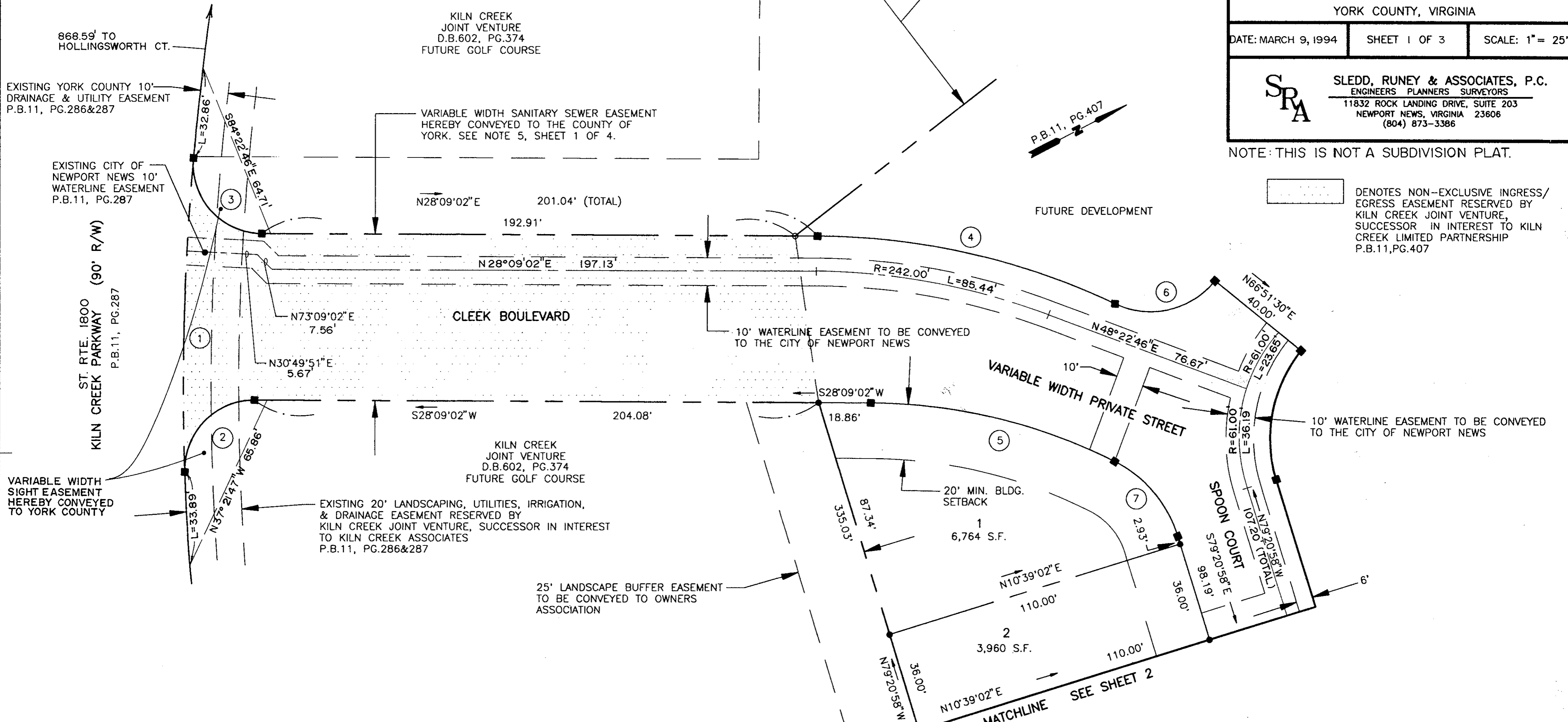
WATERLINE EASEMENT PLAT
OF
THE SANCTUARY AT KILN CREEK
SECTION ONE
SINGLE FAMILY ATTACHED 1
YORK COUNTY, VIRGINIA

DATE: MARCH 9, 1994 SHEET 1 OF 3 SCALE: 1" = 25'

SRA SLEDD, RUNEY & ASSOCIATES, P.C.
ENGINEERS PLANNERS SURVEYORS
11832 ROCK LANDING DRIVE, SUITE 203
NEWPORT NEWS, VIRGINIA 23606
(804) 873-3386

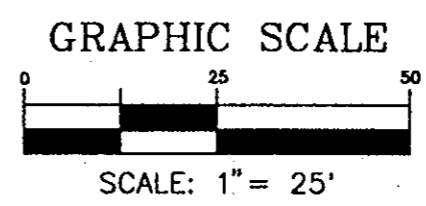
NOTE: THIS IS NOT A SUBDIVISION PLAT.

□ DENOTES NON-EXCLUSIVE INGRESS/EGRESS EASEMENT RESERVED BY KILN CREEK JOINT VENTURE, SUCCESSOR IN INTEREST TO KILN CREEK LIMITED PARTNERSHIP P.B.11, PG.407



CURVE DATA TABLE

CURVE	DELTA	RADIUS	LENGTH	TANGENT	CHORD	BEARING
1	07°07'35"	910.00'	113.19'	56.67'	113.11'	S60°36'58"E
2	92°19'47"	25.00'	40.29'	26.04'	36.07'	S18°00'52"E
3	94°47'48"	25.00'	41.36'	27.19'	36.80'	N75°32'56"E
4	25°00'13"	255.00'	111.28'	56.54'	110.40'	S40°39'09"W
5	26°14'04"	200.00'	91.58'	46.60'	90.78'	S41°16'04"W
6	76°17'45"	30.00'	39.95'	23.56'	37.06'	N15°00'23"E
7	46°15'56"	45.00'	36.34'	19.22'	35.36'	S77°31'04"W
8	04°52'05"	110.00'	9.35'	4.68'	9.34'	S81°47'01"E
9	12°57'28"	110.00'	24.88'	12.49'	24.82'	N89°18'13"E
10	12°53'27"	110.00'	24.75'	12.43'	24.70'	N76°22'45"E
11	12°06'18"	110.00'	23.24'	11.66'	23.20'	N63°52'52"E
12	12°43'07"	110.00'	24.42'	12.26'	24.37'	N51°28'10"E
13	02°27'35"	110.00'	4.72'	2.36'	4.72'	N43°52'49"E
14	58°00'00"	70.00'	70.86'	38.80'	67.87'	N71°39'02"E
15	03°54'19"	110.00'	7.50'	3.75'	7.50'	N40°41'52"E
16	13°05'30"	110.00'	25.13'	12.62'	25.08'	N32°11'58"E
17	13°56'45"	110.00'	26.77'	13.45'	26.71'	N18°40'50"E
18	13°48'34"	110.00'	26.51'	13.32'	26.45'	N04°48'11"E
19	14°06'59"	110.00'	27.10'	13.62'	27.03'	N09°09'36"W
20	92°00'00"	70.00'	112.40'	72.49'	100.71'	N03°20'58"W
21	94°19'19"	50.00'	82.31'	53.92'	73.33'	S32°11'18"E



Plat Book No. 12 Page 62
 Filed in the Clerk's Office, Circuit Court, York Co., Va.
 the 3 day of July 1994
 Teste:
 Nancy B. Kane, Clerk
[Signature] DC