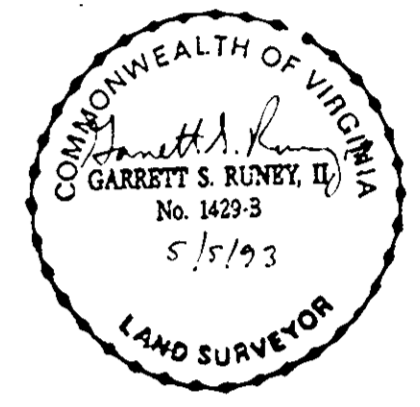


PLAT OF SUBDIVISION
THE VILLAGES OF KILN CREEK
OAKWOOD
SINGLE FAMILY AREA 10
COUNTY OF YORK, VIRGINIA

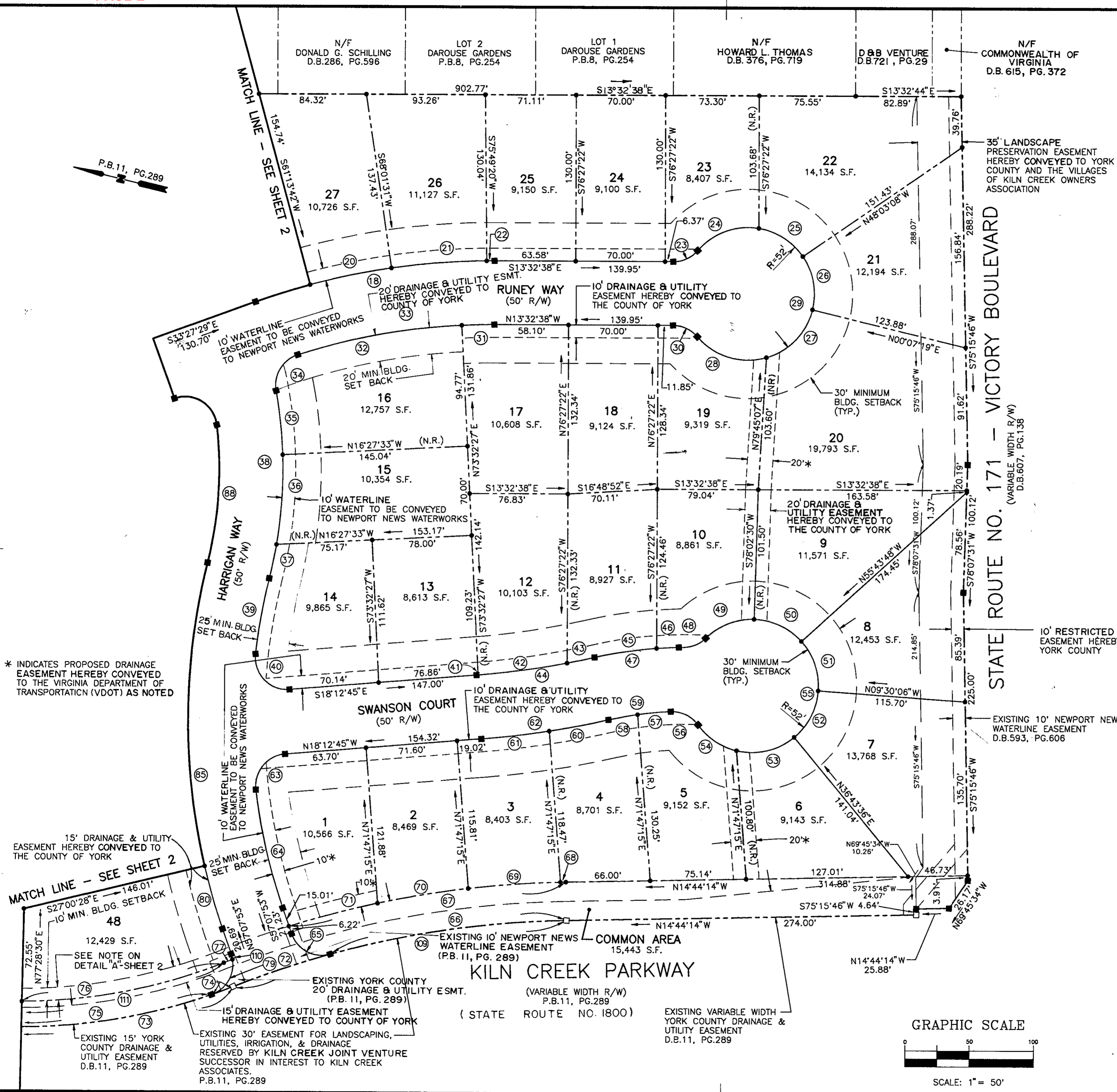
DATE: 31 JAN., 1993 SHEET 3 OF 3 SCALE: 1" = 50'

SRA SLEDD, RUNEY & ASSOCIATES, P.C.
ENGINEERS PLANNERS SURVEYORS
11832 ROCK LANDING DRIVE, SUITE 203
NEWPORT NEWS, VIRGINIA 23606
(804) 873-3386



LEGEND

- INDICATES CONC. MON. TO BE SET
- INDICATES IRON PIPE TO BE SET
- INDICATES CONC. MON. FOUND
- INDICATES IRON PIPE FOUND
- INDICATES EASEMENT HEREBY CONVEYED AS NOTED
- INDICATES EXISTING EASEMENT AS NOTED



* INDICATES PROPOSED DRAINAGE EASEMENT HEREBY CONVEYED TO THE VIRGINIA DEPARTMENT OF TRANSPORTATION (VDOT) AS NOTED

15' DRAINAGE & UTILITY EASEMENT HEREBY CONVEYED TO THE COUNTY OF YORK

10' MIN. BLDG. SETBACK

12,429 S.F. SEE NOTE ON DETAIL "A" SHEET 2

EXISTING 15' YORK COUNTY DRAINAGE & UTILITY EASEMENT D.B.11, PG.289

EXISTING 30' EASEMENT FOR LANDSCAPING, UTILITIES, IRRIGATION, & DRAINAGE RESERVED BY KILN CREEK JOINT VENTURE SUCCESSOR IN INTEREST TO KILN CREEK ASSOCIATES. P.B.11, PG.289

EXISTING YORK COUNTY 20' DRAINAGE & UTILITY ESMT. (P.B. 11, PG. 289)

EXISTING 10' NEWPORT NEWS WATERLINE EASEMENT (P.B. 11, PG. 289)

COMMON AREA 15,443 S.F.

KILN CREEK PARKWAY (STATE ROUTE NO. 1800)

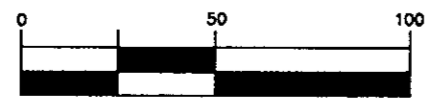
EXISTING VARIABLE WIDTH YORK COUNTY DRAINAGE & UTILITY EASEMENT D.B.11, PG.289

STATE ROUTE NO. 171 - VICTORY BOULEVARD (VARIABLE WIDTH R/W) D.B.607, PG.138

10' RESTRICTED ACCESS EASEMENT HEREBY CONVEYED TO YORK COUNTY

EXISTING 10' NEWPORT NEWS WATERLINE EASEMENT D.B.593, PG.606

GRAPHIC SCALE



SCALE: 1" = 50'

APPROVED: YORK COUNTY BOARD OF SUPERVISORS

BY: *James B. ...* PLAT APPROVING AGENT
DATE: *July 13, 1994*

STATE OF VIRGINIA
COUNTY OF YORK

IN THE CLERK'S OFFICE OF THE CIRCUIT COURT FOR THE COUNTY OF YORK, THE 14th DAY OF July, 1994 THIS MAP WAS PRESENTED AND ADMITTED TO RECORD AS THE LAW DIRECTS IN PLAT BOOK 12, PAGE 85.

TESTE: *Nancy B. Kane, Clerk* CLERK

BY: *Catherine ...* Deed Book 805, Page 379.