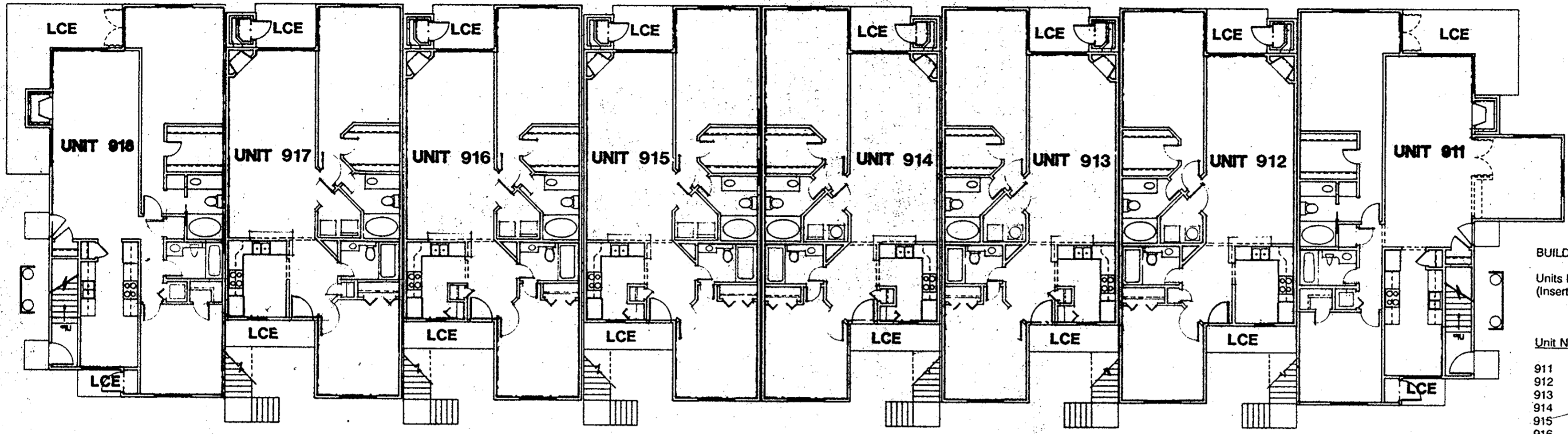


WILLIAMS, TAZEWELL AND ASSOCIATES
 Architecture Engineering Planning Interiors
 710 West 21st Street, Norfolk, Virginia 23517



1ST FLOOR PLAN - BUILDING 9 UNITS 911-918

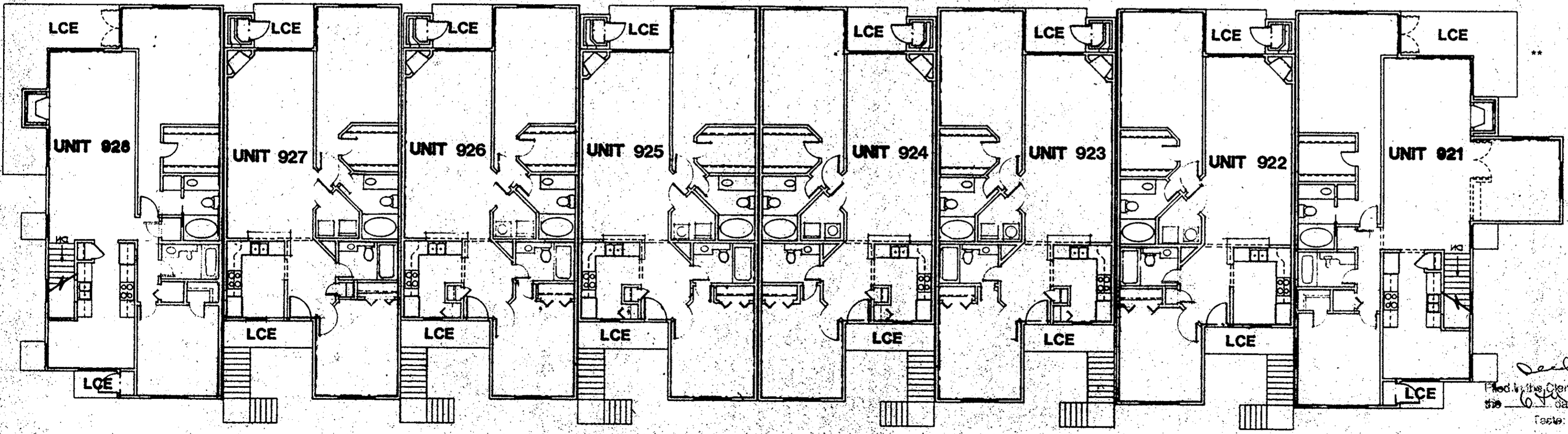
BUILDING 9
 Units listed below will be addressed as follows:
 (Insert Unit #) Ironwood Drive

Unit No.	Lower Boundary Elevation*	Upper Boundary Elevation**
911	34.6	Varies 42.64-43.55
912	34.6	Varies 42.64-43.55
913	34.6	Varies 42.64-43.55
914	34.6	Varies 42.64-43.55
915	34.6	Varies 42.64-43.55
916	34.6	Varies 42.64-43.55
917	34.6	Varies 42.64-43.55
918	34.6	Varies 42.64-43.55
921	44.98	Varies 53.04-55.04
922	44.98	Varies 53.04-55.04
923	44.98	Varies 53.04-55.04
924	44.98	Varies 53.04-55.04
925	44.98	Varies 53.04-55.04
926	44.98	Varies 53.04-55.04
927	44.98	Varies 53.04-55.04
928	44.98	Varies 53.04-55.04

NOTE:
 SEE UNIT FLOOR PLANS FOR MORE DETAILED
 BOUNDARY AND COMMON ELEMENT INFORMATION

LEGEND:
 S.B. - SIDE (PERIMETER) BOUNDARY
 LCE - LIMITED COMMON ELEMENT
 CE - COMMON ELEMENT

* Note: The numerical value given as the lower boundary of each unit is the elevation of the horizontal plane of the upper surface of the gypsum-concrete floor topping of the unit.
 ** Note: The numerical value given as the upper boundary of each unit is the elevation of the horizontal plane(s) of the upper (covered) surface of the gypsum board (or other material) constituting the exposed ceiling of the unit.



2ND FLOOR PLAN - BUILDING 9 UNITS 921-928

ARCHITECT'S CERTIFICATE

I hereby certify that this is a correct and accurate plan, that this plan is in compliance with Virginia Code Ann. Subsections 55-78.05 (b) and (c) and that the units depicted herein have been substantially completed.

Robert A. Magoon, Jr.
 Robert A. Magoon, Jr., AIA
 Date: 8/21/99

Seal Book 8138-192
 Filed in the Clerk's Office, Circuit Court, York Co., Va.
 this 6th day of September 1999
 Nancy B. Kase, Clerk
 Seal Book 12 Page 127

Plat of Condominium
 EAGLE SOUND AT KILN CREEK
 YORK COUNTY, VIRGINIA

EXHIBIT
 A-3
 PHASE
 NINE

NO.	DATE	REVISIONS	BY