

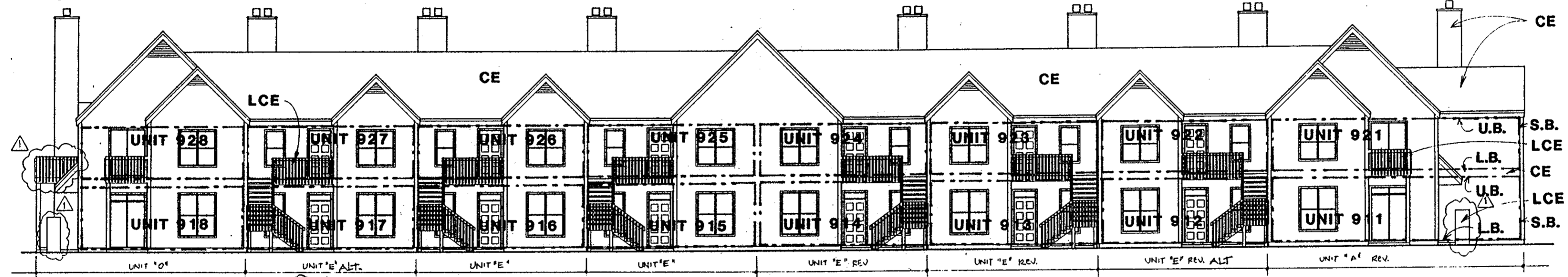
ARCHITECT'S CERTIFICATE

I hereby certify that this is a correct and accurate plan, that this plan is in compliance with Virginia Code Ann. Subsections 55-79.58 (b) and (e), and that the units depicted hereon have been substantially completed.

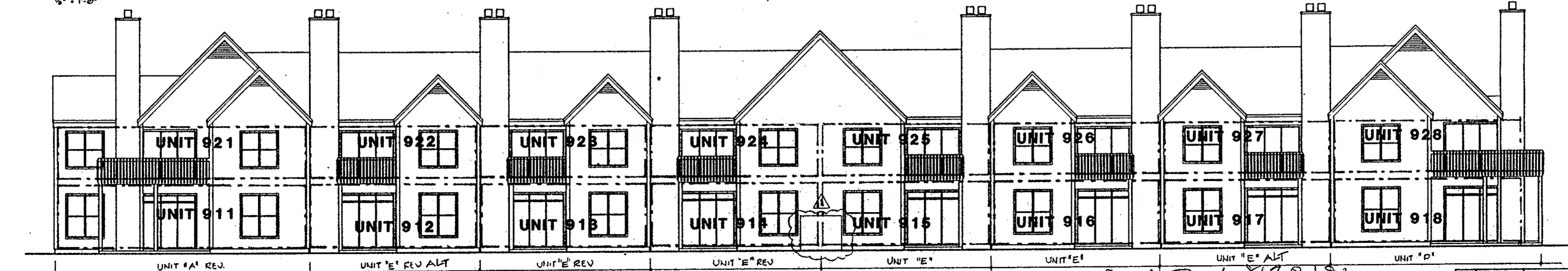
Robert A. Magoon Jr.
Robert A. Magoon Jr., AIA

8/21/94
Date

- LEGEND:
- S.B. - SIDE (PERIMETER) BOUNDARY
 - L.B. - LOWER BOUNDARY
 - U.B. - UPPER BOUNDARY
 - CE - COMMON ELEMENT
 - LCE - LIMITED COMMON ELEMENT



NOTE: BOUNDARY AND COMMON ELEMENT DESIGNATIONS SHOWN FOR BUILDING 9 ARE TYPICAL FOR ALL ELEVATIONS



Filed in the Clerk's Office, Circuit Court, York Co., Va.
the 10th day of October 1994

Teste: Nancy B. Kane, Clerk

10/20/94	APPENDIX
12/6/94	REVISION

NO	DATE	REVISIONS	BY

WILLIAMS, TAZEWELL AND ASSOCIATES
 Architecture Engineering Planning Interiors
 710 West 21st Street, Norfolk, Virginia 23517



Plat of Condominium
 EAGLE SOUND AT KILN CREEK
 YORK COUNTY, VIRGINIA

EXHIBIT A-3

PHASE NINE

File 9146.01A
Date 10 OCT. 1994
Sheet