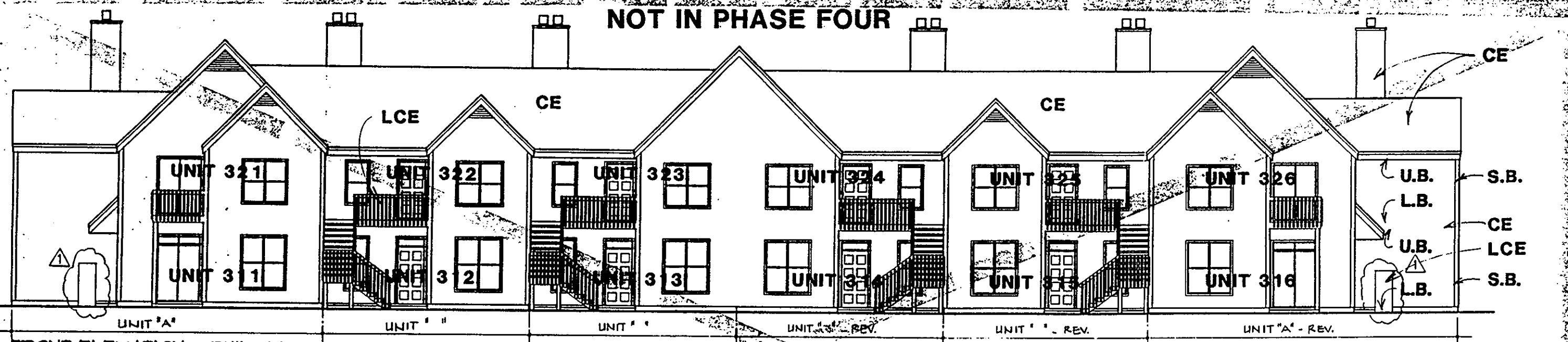


NOT IN PHASE FOUR



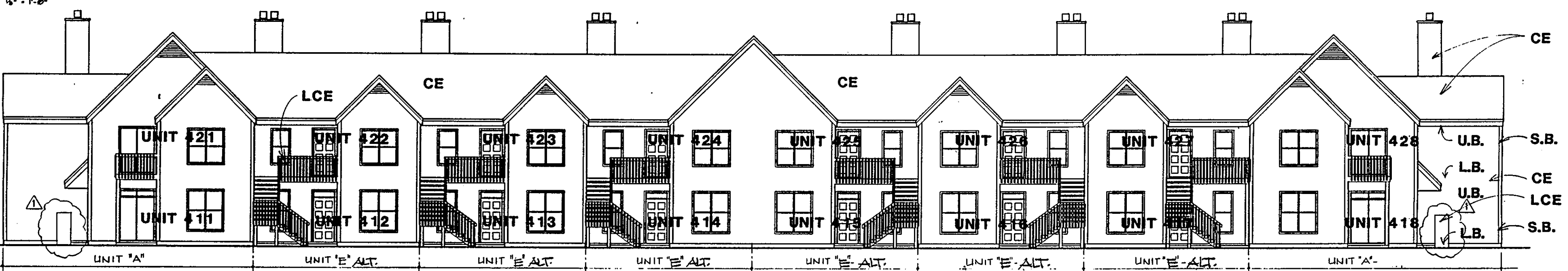
FRONT ELEVATION - BUILDING 3

NOTE: BOUNDARY AND COMMON ELEMENT DESIGNATIONS SHOWN FOR BUILDING 3 ARE TYPICAL FOR ALL ELEVATIONS



REAR ELEVATION - BUILDING 3

- LEGEND:
- S.B. - SIDE (PERIMETER) BOUNDARY
 - L.B. - LOWER BOUNDARY
 - U.B. - UPPER BOUNDARY
 - CE - COMMON ELEMENT
 - LCE - LIMITED COMMON ELEMENT



FRONT ELEVATION - BUILDING 4

NOTE: BOUNDARY AND COMMON ELEMENT DESIGNATIONS SHOWN FOR BUILDING 4 ARE TYPICAL FOR ALL ELEVATIONS



REAR ELEVATION - BUILDING 4

I hereby certify that this is a correct and accurate plan, that this plan is in compliance with Virginia Code Ann. Subsections 55-79.85 (b) and (e) and that the units depicted hereon have been substantially completed.
 January 1, 1995
 P.E.



WILLIAMS, TAZEWELL AND ASSOCIATES
 Architecture Engineering Interiors
 710 West 21st Street
 Norfolk, Virginia 23517

Filed in the Clerk's Office, Circuit Court, York Co., Va.
 this 26th day of April 1995
 12:30
 Nancy S. Kane, Clerk
 P. 12, pg. 235

Plat of Condominium
 EAGLE SOUND AT KILN CREEK
 YORK COUNTY,
 VIRGINIA

EXHIBIT
 A-3
 PHASE
 FOUR

| | | | | |
|---------|----------|----------|-----------|-----|
| 12/6/91 | REVISION | 10/26/91 | ADDENDA | RAM |
| | | NO. DATE | REVISIONS | BY |