

PLAT OF WATERMAIN EASEMENTS LOCATED IN
THE VILLAGES OF KILN CREEK
AVERY WOODS
CORPORATE CENTER 7
COUNTY OF YORK, VIRGINIA
ACROSS THE LANDS OF
D & B VENTURE, L.C.
TO BE CONVEYED TO
THE CITY OF NEWPORT NEWS, VIRGINIA

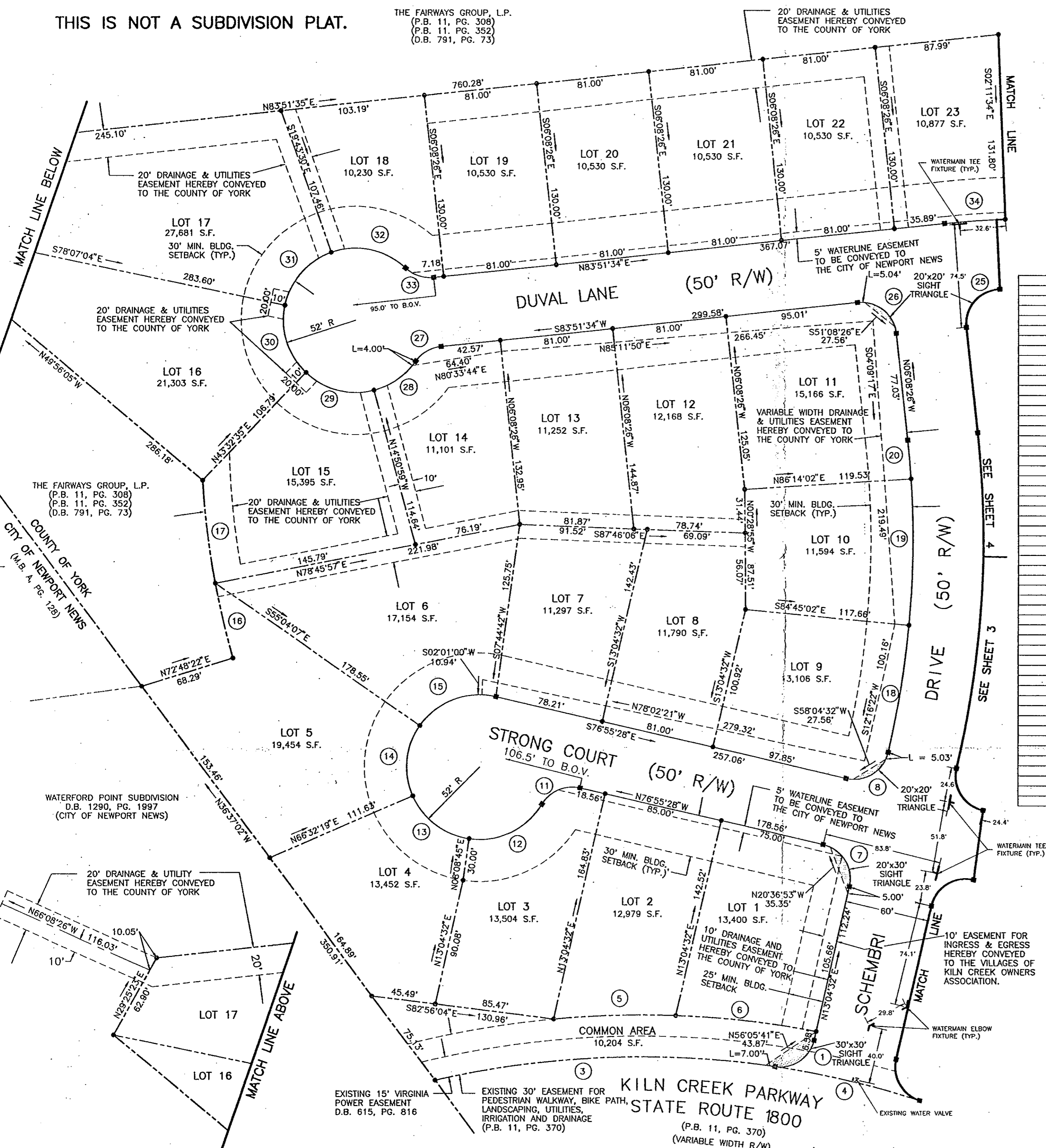
DATE: FEB. 1, 1995 SHEET 2 OF 4 SCALE: 1"=50'
PROJECT NO: 93-001R DRAWN BY: PAUL MICHAEL

SRA SLEDD, RUNEY & ASSOCIATES, P.C.
ENGINEERS PLANNERS SURVEYORS
11832 ROCK LANDING DRIVE, SUITE 203
NEWPORT NEWS, VIRGINIA 23606
(804) 873-3386
PRINT FILE N&N-9003 - N-9006 EAST EST. NO. 028 FY95

THIS IS NOT A SUBDIVISION PLAT.

THE FAIRWAYS GROUP, L.P.
(P.B. 11, PG. 308)
(P.B. 11, PG. 352)
(O.B. 791, PG. 73)

20' DRAINAGE & UTILITIES
EASEMENT HEREBY CONVEYED
TO THE COUNTY OF YORK



P.B. 11, PG. 288

CURVE DATA CONTINUED FROM SHEET 1

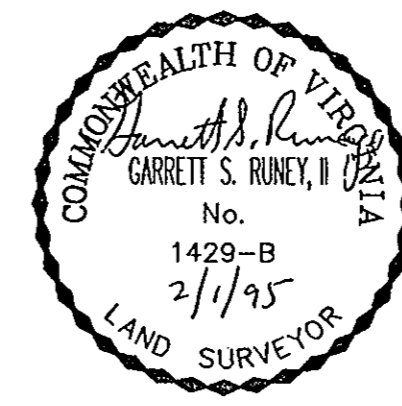
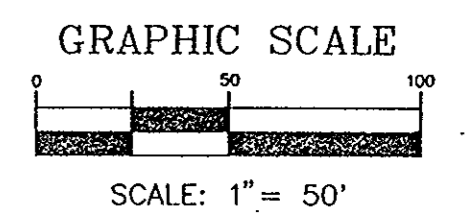
CURVE	DELTA	RADIUS	LENGTH	TANGENT	CHORD	BEARING
51	05°40'15"	270.00'	26.72'	13.37'	26.71'	N05°44'07"E
52	23°59'43"	270.00'	113.08'	57.38'	112.25'	S20°34'06"W
53	01°28'38"	270.00'	6.80'	3.40'	6.80'	N33°17'17"E
54	07°12'32"	625.00'	78.64'	39.37'	78.59'	N38°53'23"W
55	08°49'16"	625.00'	96.22'	48.21'	96.13'	S30°52'28"E
56	00°20'08"	625.00'	3.66'	1.83'	3.66'	S26°17'46"E
57	49°30'26"	25.00'	21.60'	11.53'	20.94'	S50°52'55"E
58	60°32'31"	52.00'	54.95'	30.35'	52.43'	N45°21'53"W
59	58°23'34"	52.00'	53.00'	29.06'	50.73'	N14°06'09"E
60	58°23'34"	52.00'	53.00'	29.06'	50.73'	S72°29'44"W
61	58°23'34"	52.00'	53.00'	29.06'	50.73'	N49°06'42"W
62	43°17'40"	52.00'	39.29'	20.64'	38.36'	S01°43'55"W
63	49°30'26"	25.00'	21.60'	11.53'	20.94'	S01°22'29"E
64	02°44'07"	575.00'	27.45'	13.73'	27.45'	S27°29'45"E
65	12°28'24"	575.00'	125.18'	62.84'	124.93'	S35°06'01"E
66	20°49'08"	148.80'	54.07'	27.34'	53.77'	S25°34'19"E
67	32°40'52"	148.80'	84.87'	43.63'	83.73'	S01°10'41"W
68	12°29'06"	346.46'	75.49'	37.90'	75.35'	N11°16'34"E
69	12°21'49"	346.46'	74.76'	37.53'	74.62'	N01°08'53"W
70	12°21'49"	346.46'	74.76'	37.53'	74.62'	N13°30'42"W
71	12°21'49"	346.46'	74.76'	37.53'	74.62'	S25°52'30"E
72	22°21'36"	200.00'	78.05'	39.53'	77.56'	N20°52'37"W
73	45°49'39"	200.00'	159.97'	84.54'	155.74'	S13°13'01"W
74	21°23'16"	200.00'	74.66'	37.77'	74.23'	N46°49'29"E
75	03°48'53"	625.00'	41.61'	20.81'	41.60'	S41°32'23"W
76	07°57'38"	625.00'	86.84'	43.49'	86.77'	S35°39'08"W
77	01°24'33"	625.00'	15.37'	7.69'	15.37'	N30°58'03"E
78	86°06'58"	25.00'	37.58'	23.36'	34.14'	S73°19'15"W
79	86°06'58"	25.00'	37.58'	23.36'	34.14'	S12°47'43"E
80	02°01'40"	575.00'	20.35'	10.18'	20.35'	N31°16'36"E
81	11°09'23"	575.00'	111.96'	56.16'	111.79'	N37°52'08"E
82	06°50'19"	713.17'	85.12'	42.61'	85.07'	N73°53'33"W
83	06°51'08"	713.17'	85.29'	42.70'	85.24'	S67°02'50"E
84	07°13'57"	663.17'	83.71'	41.91'	83.66'	S73°18'30"E
85	08°20'05"	663.17'	96.47'	48.32'	96.38'	S65°31'29"E
86	08°21'45"	663.17'	96.79'	48.48'	96.71'	S57°10'34"E
87	07°16'52"	663.17'	84.27'	42.19'	84.22'	S49°21'15"E
88	05°54'12"	713.17'	73.48'	36.77'	73.45'	N52°54'06"W
89	04°35'32"	713.17'	57.16'	28.59'	57.14'	N47°39'14"W
90	47°11'39"	25.00'	20.59'	10.92'	20.02'	S68°57'18"E
91	79°23'23"	52.00'	72.05'	43.16'	66.42'	N52°51'26"W
92	58°23'34"	52.00'	53.00'	29.06'	50.73'	N16°02'03"E
93	58°23'34"	52.00'	53.00'	29.06'	50.73'	S74°25'37"W
94	82°45'01"	52.00'	75.10'	45.80'	68.74'	N35°00'05"W
95	29°16'25"	25.00'	12.77'	6.53'	12.63'	N31°04'37"W
96	22°48'50"	25.00'	9.95'	5.04'	9.89'	S05°01'59"E
97	07°44'03"	680.97'	91.92'	46.03'	91.85'	S70°31'57"E
98	06°25'43"	680.97'	76.41'	38.24'	76.37'	N63°27'04"W
99	06°25'40"	680.97'	76.39'	38.24'	76.35'	S57°01'23"E
100	06°25'42"	680.97'	76.40'	38.24'	76.36'	S50°35'42"E
101	08°32'31"	680.97'	101.52'	50.86'	101.43'	N43°06'36"W
102	38°08'56"	650.97'	433.43'	225.09'	425.47'	S53°10'59"E

Plat Book No. 12 Page 245

Filed in the Clerk's Office, Circuit Court, York Co., Va.
the 24th day of May 1995

Teste:
Nancy B. Kane, Clerk
Caryl D. Rossel D.C.
NANCY B. KANE, CLERK
LEGEND

---●--- INDICATES IRON PIPE TO BE SET
---■--- INDICATES CONC. MON. TO BE SET



KILN CREEK PARKWAY
STATE ROUTE 1800
(P.B. 11, PG. 370)
(VARIABLE WIDTH R/W)

EXISTING 15' VIRGINIA
POWER EASEMENT
D.B. 615, PG. 816

EXISTING 30' EASEMENT FOR
PEDESTRIAN WALKWAY, BIKE PATH,
LANDSCAPING, UTILITIES,
IRRIGATION AND DRAINAGE
(P.B. 11, PG. 370)