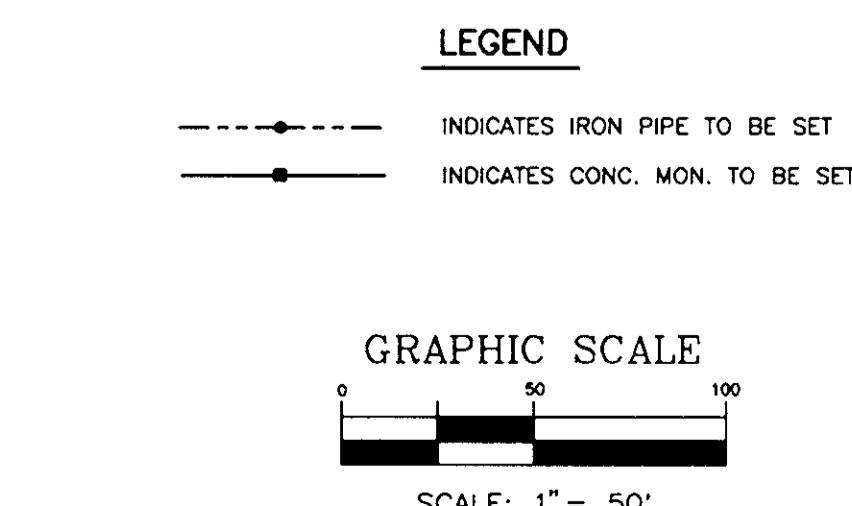
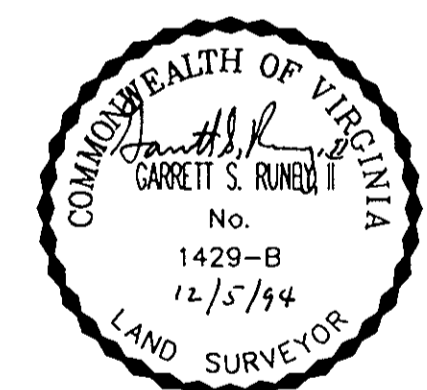
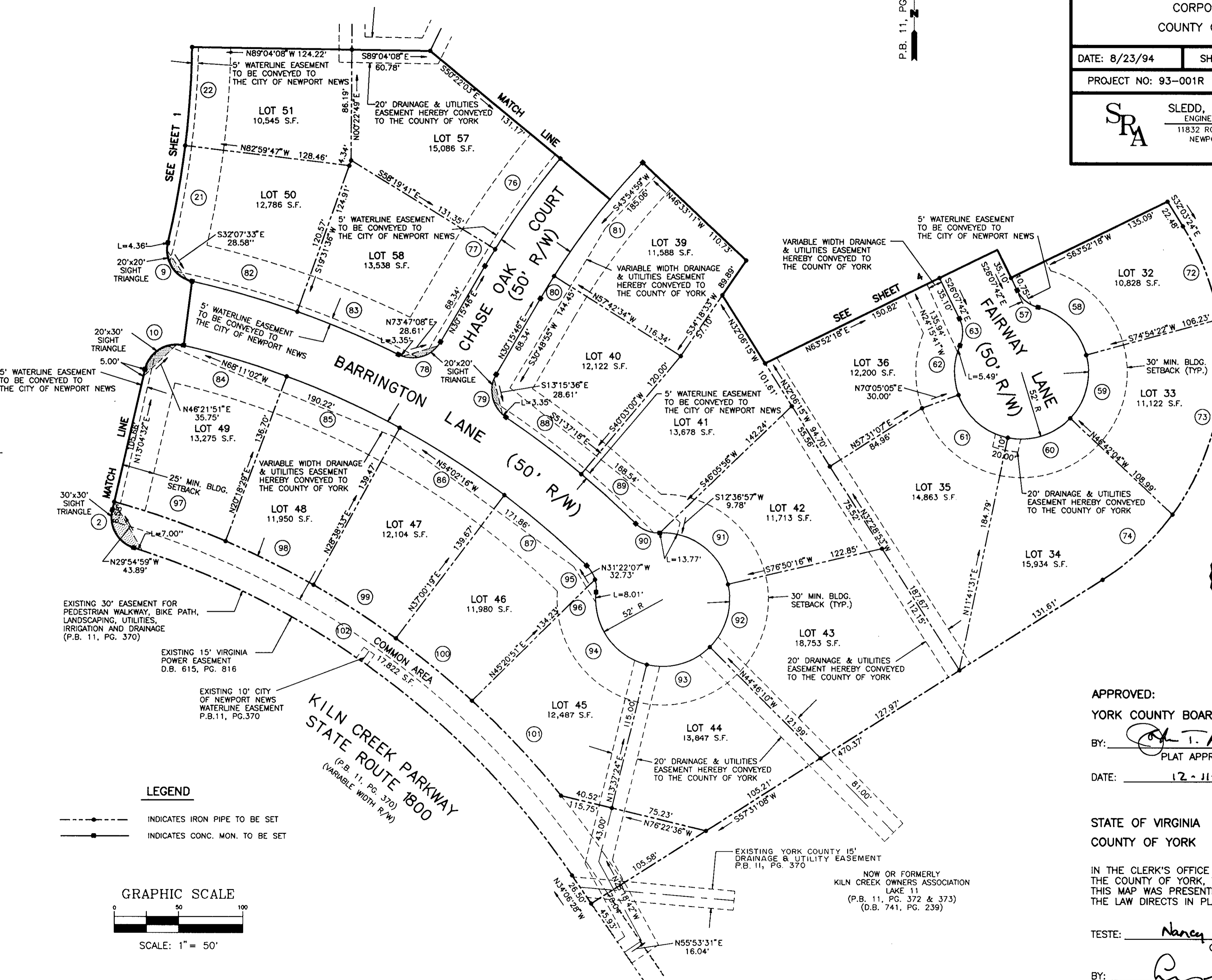
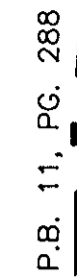


PLAT OF SUBDIVISION
 THE VILLAGES OF KILN CREEK
AVERY WOODS
 CORPORATE CENTER 7
 COUNTY OF YORK, VIRGINIA

DATE: 8/23/94 SHEET 3 OF 4 SCALE: 1"=50'
 PROJECT NO: 93-001R DRAWN BY: PAUL MICHAEL

SRA SLEDD, RUNEY & ASSOCIATES, P.C.
 ENGINEERS PLANNERS SURVEYORS
 11832 ROCK LANDING DRIVE, SUITE 203
 NEWPORT NEWS, VIRGINIA 23606
 (804) 873-3386



APPROVED:
 YORK COUNTY BOARD OF SUPERVISORS
 BY: John T. Almon, PE
 PLAT APPROVING AGENT
 DATE: 12-11-95

STATE OF VIRGINIA
 COUNTY OF YORK
 IN THE CLERK'S OFFICE OF THE CIRCUIT COURT FOR
 THE COUNTY OF YORK, THE 11th DAY OF Dec, 1995
 THIS MAP WAS PRESENTED AND ADMITTED TO RECORD AS
 THE LAW DIRECTS IN PLAT BOOK 12, PAGE 314 3:35

TESTE: Nancy B. Kane, Clerk
 CLERK
 BY: Paul Michael

NOW OR FORMERLY
 KILN CREEK OWNERS ASSOCIATION
 LAKE 11
 (P.B. 11, PG. 372 & 373)
 (D.B. 741, PG. 239)