

I HEREBY CERTIFY THAT THIS SURVEY TO THE BEST OF MY KNOWLEDGE AND BELIEF, IS CORRECT AND COMPLIES WITH THE MINIMUM PROCEDURES AND STANDARDS ESTABLISHED BY THE VIRGINIA BOARD OF ARCHITECTS, PROFESSIONAL ENGINEERS, LAND SURVEYORS AND CERTIFIED LANDSCAPE ARCHITECTS.

*C.E. Newbaker, III*  
C.E. NEWBAKER, III L.S.1380

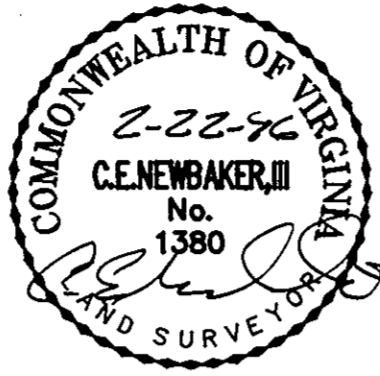
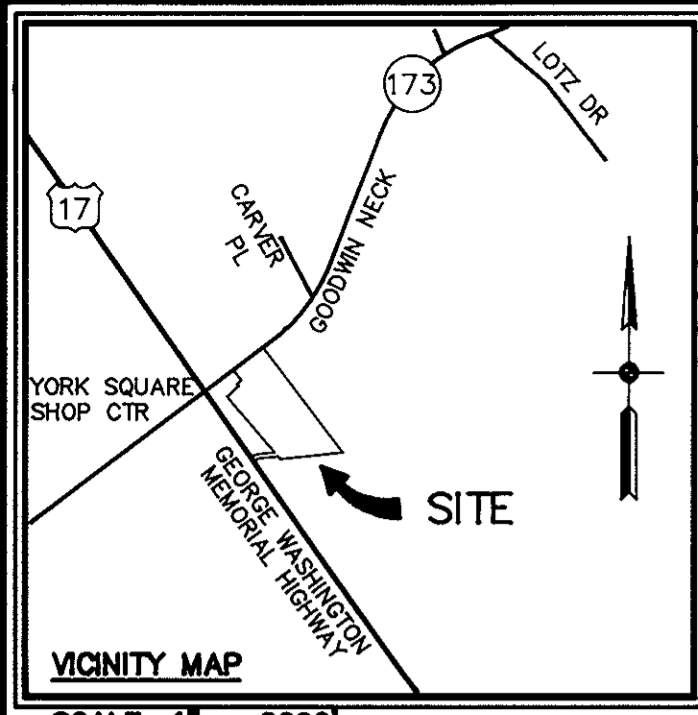


EXHIBIT PLAT  
PROPERTY OF  
TABB DEVELOPMENT COMPANY, L.L.C.,  
A VIRGINIA LIMITED LIABILITY COMPANY  
GRAFTON DISTRICT - COUNTY OF YORK, VIRGINIA  
SCALE: 1"=100' JANUARY 22, 1996  
0 50 100 200 300 400 FEET  
GRAPHIC SCALE

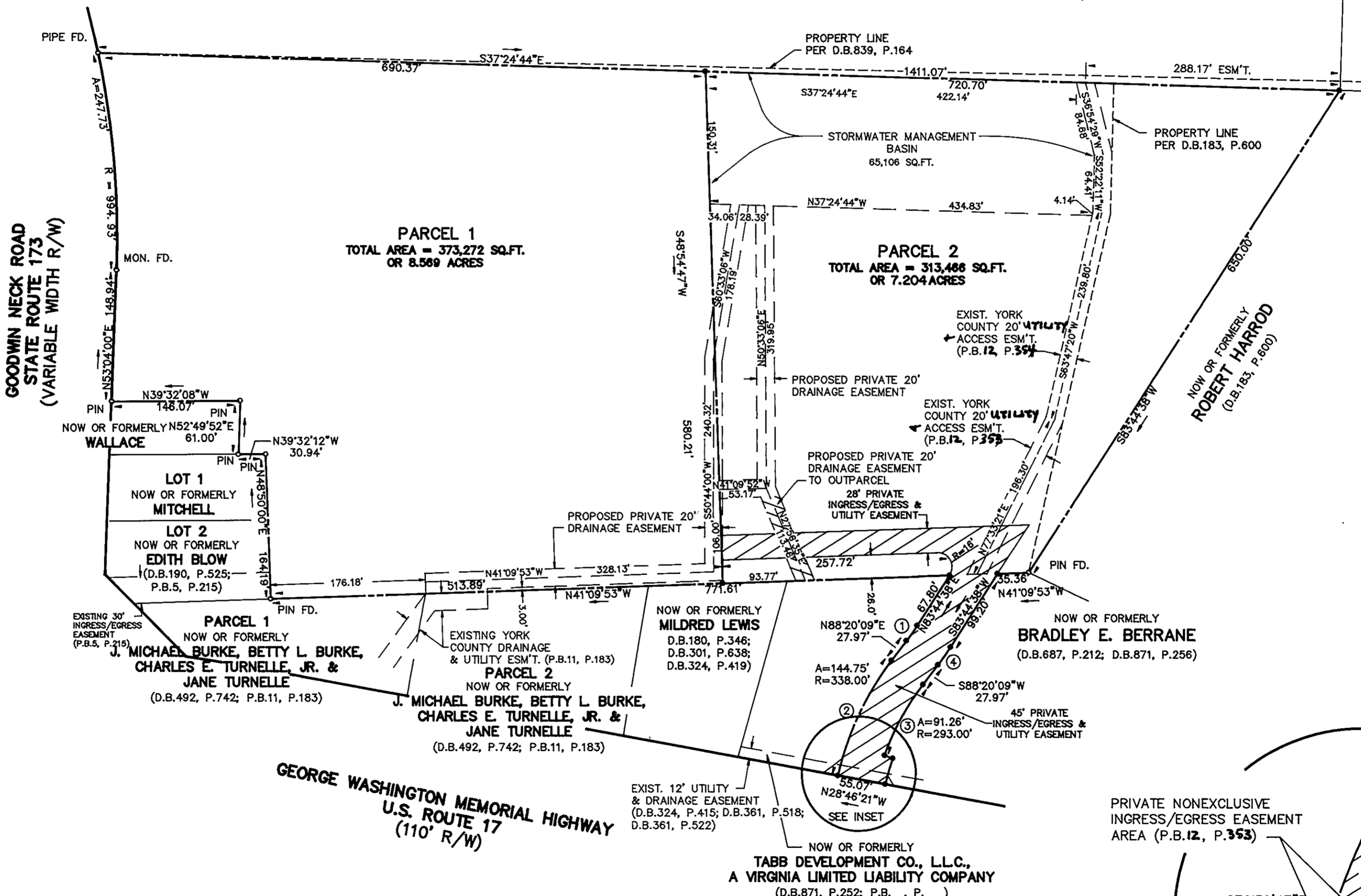
THE SIRINE GROUP, LTD.  
SURVEYORS • ENGINEERS • PLANNERS  
P.O. BOX 450, ROUTE 17  
WHITE MARSH, VIRGINIA 23183



SCALE: 1" = 2000'

- LEGEND:  
○ DENOTES PIN, PIPE, OR MONUMENT FOUND  
● DENOTES PIN SET

NOW OR FORMERLY  
WILLIAM COMBS & THELMA W. COMBS  
(D.B.481, P.804)

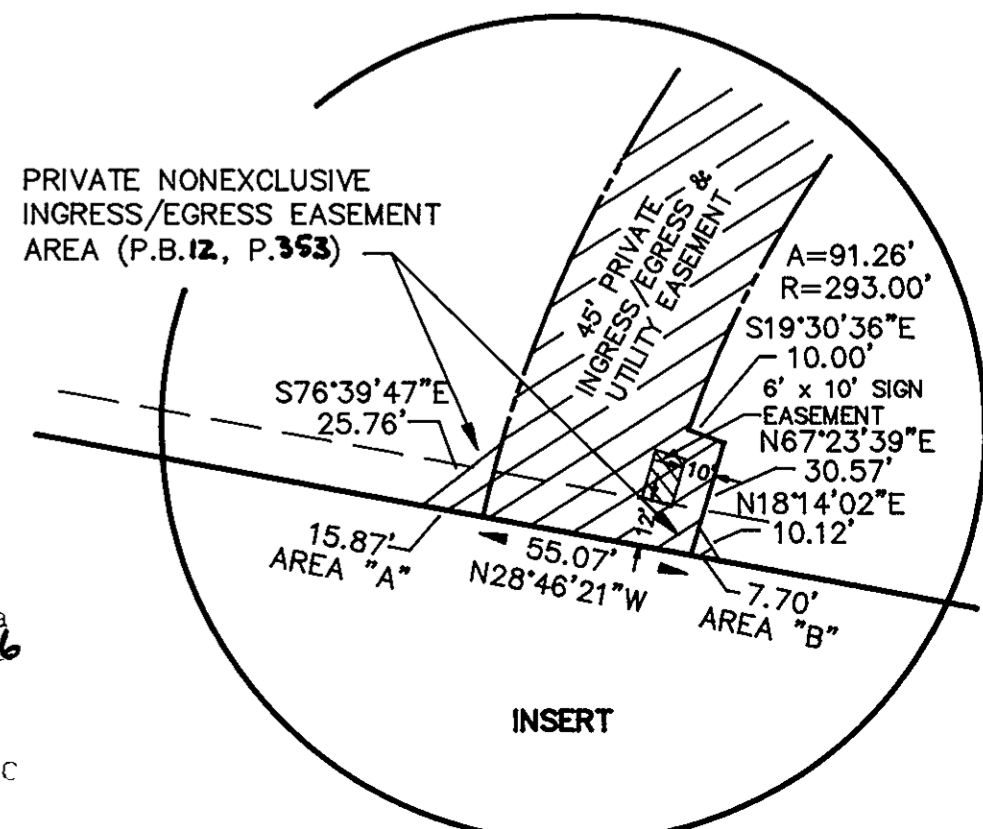


GOODWIN NECK ROAD  
STATE ROUTE 173  
(VARIABLE WIDTH R/W)

GEORGE WASHINGTON MEMORIAL HIGHWAY  
U.S. ROUTE 17  
(110' R/W)

CURVE TABLE

NO.	RADIUS	DELTA	ARC	TANGENT	CHORD	CHORD BRG.
1	262.00'	04°35'32"	21.00'	10.50'	20.99'	S86°02'24"W
2	338.00'	24°32'15"	144.75'	73.50'	143.65'	S76°04'02"W
3	293.00'	17°50'46"	91.26'	46.00'	90.89'	N79°24'47"E
4	307.00'	04°35'32"	24.61'	12.31'	24.60'	N86°02'24"E



Filed in the Clerk's Office, Circuit Court, York Co., Va  
the 4th day of March 1996  
Teste:  
Nancy B. Kane, Clerk  
*Annette Meadows* D.C.  
Plat Book No. 12 Page 355