

LOT	SQ. FT.
36	26217
37	37542
38	55021
39	22351
40	22038
41	22542
42	54100
43	27049
44	26895
45	23511
46	23619
129	22741
115	22664

NOTE: THE AREA LABELED ON THIS PLAT AS CONSERVATION EASEMENT IS HEREBY DEDICATED TO THE LAKES AT DARE HOMEOWNERS ASSOCIATION (SEE ARTICLE VI, SECTION 16 OF THE DECLARATION OF COVENANTS, CONDITIONS AND RESTRICTIONS APPLICABLE TO THE LAKES AT DARE).

# THE LAKES AT DARE

## SECTION THREE

COUNTY OF YORK, VIRGINIA

SCALE: 1" = 100' DATE: 9 AUGUST 1996

DAVIS & ASSOCIATES, P.C.

SURVEYORS - PLANNERS

4033 GEORGE WASHINGTON

MEMORIAL HIGHWAY

YORKTOWN, VIRGINIA 23962

0' 50' 100' 200'

GRAPHIC SCALE

SHEET 2 OF 2

### - SYMBOLS -

- DENOTES MINIMUM BUILDING SETBACK LINE
- DENOTES DRAINAGE EASEMENT HEREBY CONVEYED TO COUNTY OF YORK
- DENOTES UTILITY EASEMENT HEREBY CONVEYED TO COUNTY OF YORK
- DENOTES IRON PIPE FOUND
- DENOTES IRON PIPES TO BE SET AT ALL PROPERTY LINE JUNCTURES
- DENOTES CONCRETE MONUMENT FOUND
- DENOTES CONCRETE MONUMENT TO BE SET

NOTES:  
 - CONSERVATION EASEMENT: (SEE ARTICLE VI, SECTION 16 OF THE DECLARATION OF COVENANTS, CONDITIONS AND RESTRICTIONS APPLICABLE TO THE LAKES AT DARE)  
 - MAINTENANCE AND ACCESS EASEMENT: (SEE ARTICLE VI, SECTION 17 OF THE DECLARATION OF COVENANTS, CONDITIONS AND RESTRICTIONS APPLICABLE TO THE LAKES AT DARE)

APPROVED

YORK COUNTY BOARD OF SUPERVISORS

BY: **PE**  
 PLAT APPROVING AGENT

DATE: 12-8-96

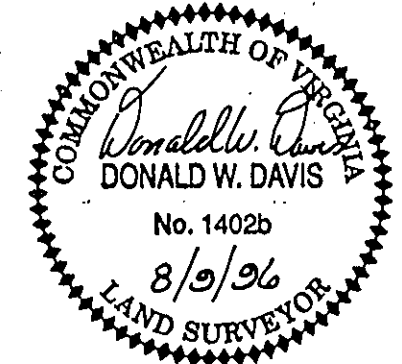
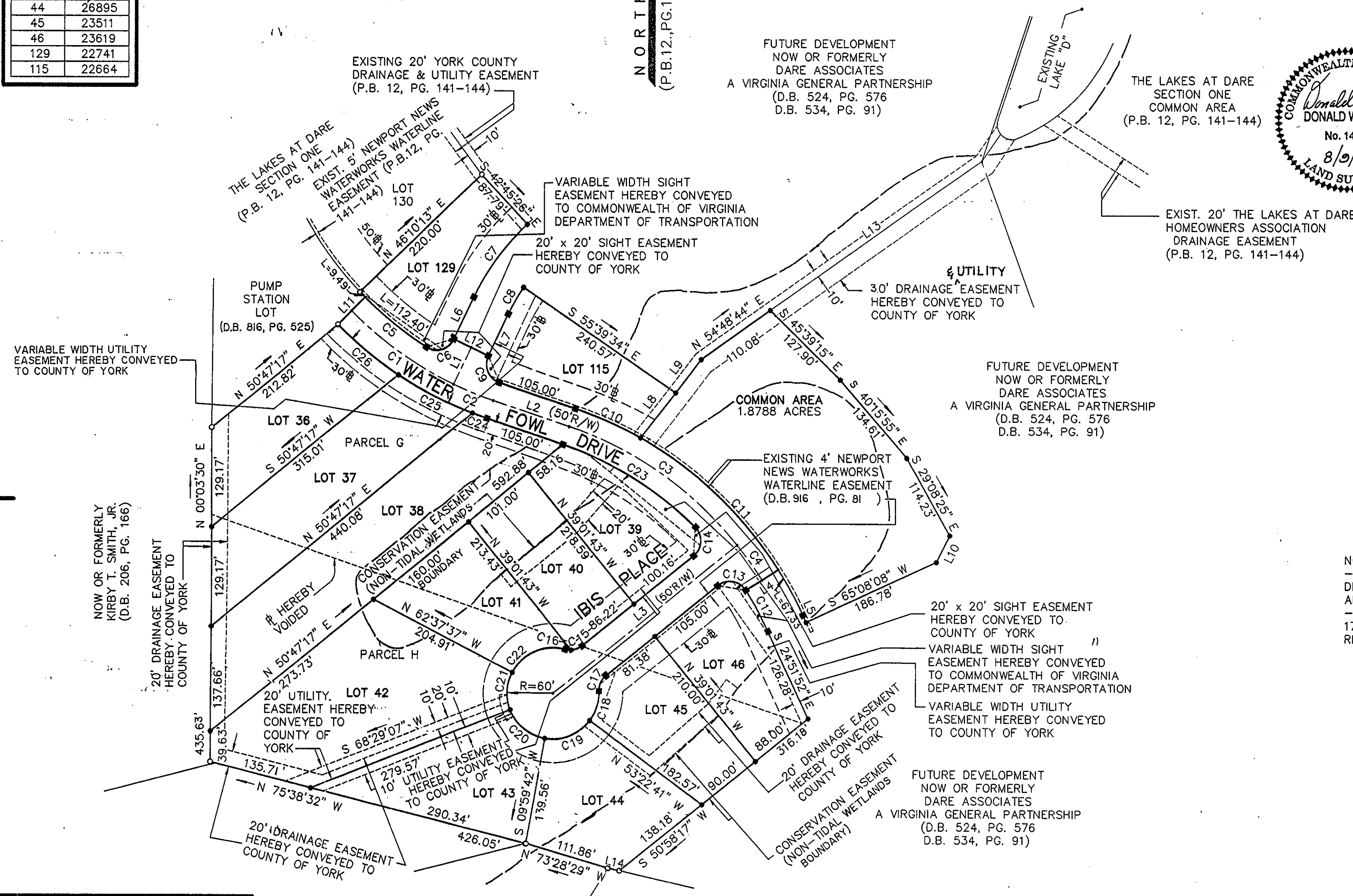
NUMBER	DIRECTION	DISTANCE
L1	S 25°34'12" W	52.88'
L2	S 71°01'49" E	105.00'
L3	S 50°58'17" W	308.00'
L4	S 57°34'18" W	50.00'
L5	S 24°51'52" E	10.00'
L6	N 25°34'12" E	60.00'
L7	N 25°34'12" E	60.00'
L8	S 37°28'42" W	75.13'
L9	S 37°28'42" W	54.69'
L10	N 26°33'54" E	38.89'
L11	N 44°59'20" E	50.00'
L12	S 64°25'48" E	50.00'
L13	N 54°48'44" E	336.56'
L14	N 77°09'15" W	15.12'

LOT AREA : 8.8680 ACRES  
 R/W AREA : 1.3142 ACRES  
 COMMON AREA : 1.8788 ACRES  
 TOTAL SUBDIVIDED AREA : 12.0610 ACRES

STATE OF VIRGINIA  
 COUNTY OF YORK  
 IN THE CLERK'S OFFICE OF THE CIRCUIT COURT FOR THE COUNTY OF YORK THE 10 DAY OF Dec, 1996 THIS MAP WAS PRESENTED AND ADMITTED TO RECORD AS THE LAW DIRECTS IN PLAT BOOK 12, PAGE 427.

TESTE: **Nancy B. Kane**  
 CLERK

BY: **Carol Drosselmeier, Deputy Clerk**



NORTH  
(P.B. 12, PG. 141-144)

FUTURE DEVELOPMENT  
 NOW OR FORMERLY  
 DARE ASSOCIATES  
 A VIRGINIA GENERAL PARTNERSHIP  
 (D.B. 524, PG. 576  
 D.B. 534, PG. 91)

THE LAKES AT DARE  
 SECTION ONE  
 COMMON AREA  
 (P.B. 12, PG. 141-144)

FUTURE DEVELOPMENT  
 NOW OR FORMERLY  
 DARE ASSOCIATES  
 A VIRGINIA GENERAL PARTNERSHIP  
 (D.B. 524, PG. 576  
 D.B. 534, PG. 91)

FUTURE DEVELOPMENT  
 NOW OR FORMERLY  
 DARE ASSOCIATES  
 A VIRGINIA GENERAL PARTNERSHIP  
 (D.B. 524, PG. 576  
 D.B. 534, PG. 91)

NOW OR FORMERLY  
 DARE ASSOCIATES  
 A VIRGINIA GENERAL PARTNERSHIP  
 (D.B. 524, PG. 576)

NOW OR FORMERLY  
 R.F. PRESSON  
 (P.B. 9, PG. 177)

VARIABLE WIDTH UTILITY  
 EASEMENT HEREBY CONVEYED  
 TO COUNTY OF YORK

NOW OR FORMERLY  
 KIRBY T. SMITH, JR.  
 (D.B. 206, PG. 166)

EXISTING 20' YORK COUNTY  
 DRAINAGE & UTILITY EASEMENT  
 (P.B. 12, PG. 141-144)

VARIABLE WIDTH SIGHT  
 EASEMENT HEREBY CONVEYED  
 TO COMMONWEALTH OF VIRGINIA  
 DEPARTMENT OF TRANSPORTATION

UTILITY  
 3.0' DRAINAGE EASEMENT  
 HEREBY CONVEYED TO  
 COUNTY OF YORK

COMMON AREA  
 1.8788 ACRES

EXISTING 4' NEWPORT  
 NEWS WATERWORKS  
 WATERLINE EASEMENT  
 (D.B. 916, PG. 81)

20' x 20' SIGHT EASEMENT  
 HEREBY CONVEYED TO  
 COUNTY OF YORK

VARIABLE WIDTH SIGHT  
 EASEMENT HEREBY CONVEYED  
 TO COMMONWEALTH OF VIRGINIA  
 DEPARTMENT OF TRANSPORTATION

VARIABLE WIDTH UTILITY  
 EASEMENT HEREBY CONVEYED  
 TO COUNTY OF YORK

20' UTILITY EASEMENT  
 HEREBY CONVEYED TO  
 COUNTY OF YORK

20' DRAINAGE EASEMENT  
 HEREBY CONVEYED TO  
 COUNTY OF YORK

CONSERVATION EASEMENT  
 (NON-TIDAL WETLANDS)  
 HEREBY CONVEYED TO  
 COUNTY OF YORK

20' DRAINAGE EASEMENT  
 HEREBY CONVEYED TO  
 COUNTY OF YORK

20' UTILITY EASEMENT  
 HEREBY CONVEYED TO  
 COUNTY OF YORK

20' DRAINAGE EASEMENT  
 HEREBY CONVEYED TO  
 COUNTY OF YORK