

PLAT OF CORRECTION FOR THE  
PLAT OF SUBDIVISION  
THE VILLAGES OF KILN CREEK

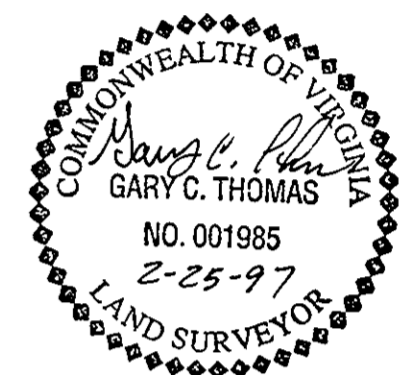
**CORPORATE CENTERS**  
**11, 11A, & 16A**

COUNTY OF YORK, VIRGINIA

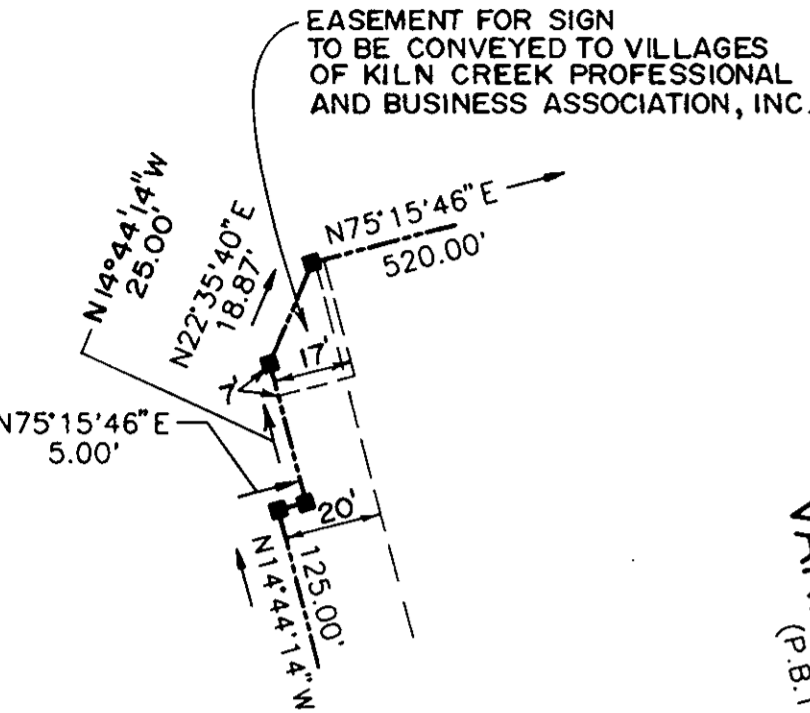
DATE: 2/25/97 SHEET 2 OF 2 SCALE: 1"=100'



**SLEDD & ASSOCIATES, P.C.**  
ENGINEERS PLANNERS SURVEYORS  
11832 ROCK LANDING DRIVE, SUITE 203  
NEWPORT NEWS, VIRGINIA 23606  
(757) 873-3386

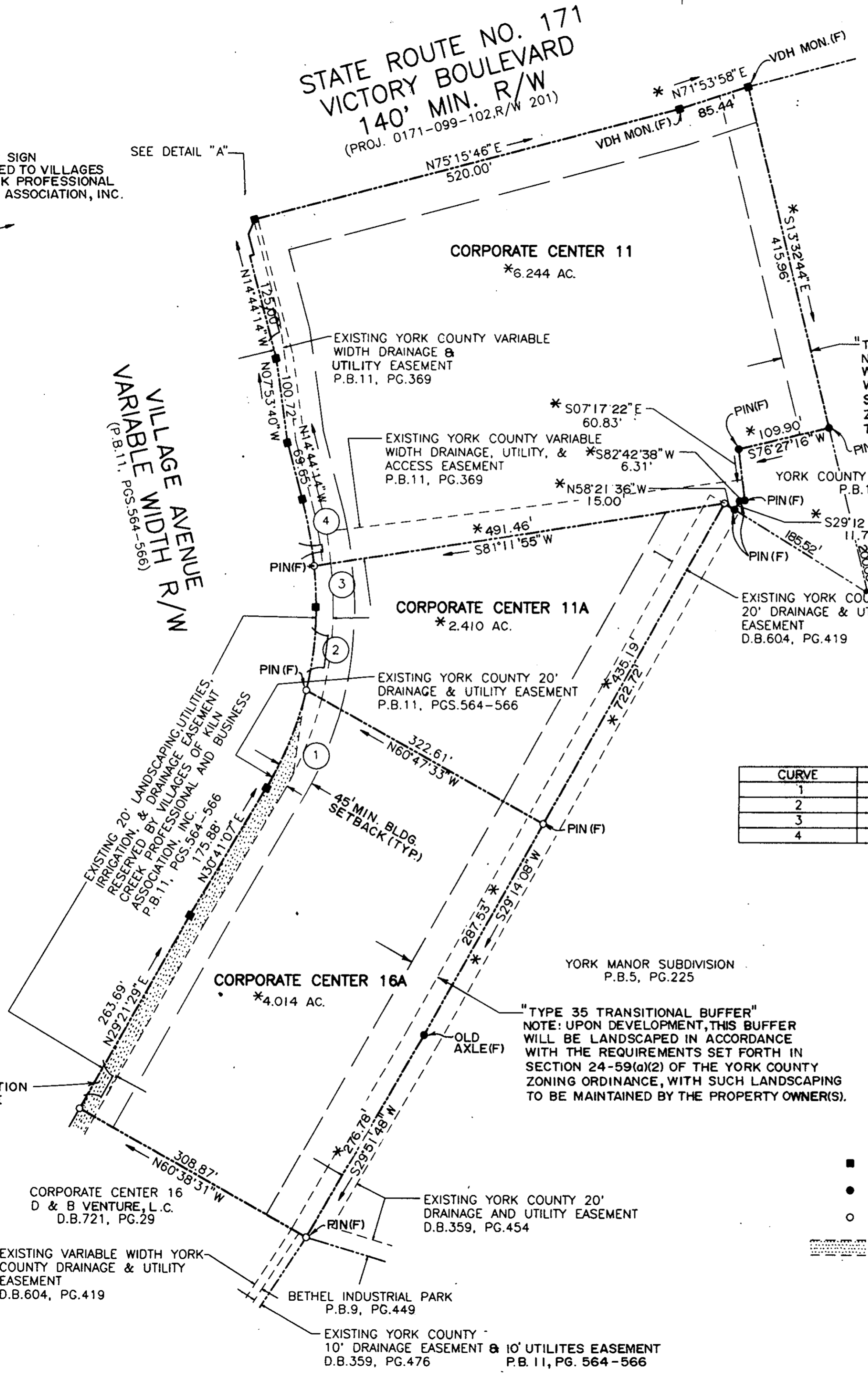


**STATE ROUTE NO. 171**  
**VICTORY BOULEVARD**  
**140' MIN. R/W**  
(PROJ. 0171-099-102.R/W 201)



**DETAIL "A"**  
NOT TO SCALE

**VILLAGE AVENUE**  
**VARIABLE WIDTH R/W**  
(P.B.11, PGS.564-566)



MARSHALL W. COOK  
D.B.342, PG.335

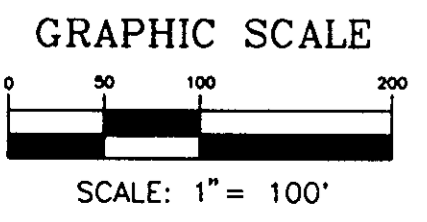
P.B.11, PG.372

"TYPE 35 TRANSITIONAL BUFFER"  
NOTE: UPON DEVELOPMENT, THIS BUFFER WILL BE LANDSCAPED IN ACCORDANCE WITH THE REQUIREMENTS SET FORTH IN SECTION 24-59(a)(2) OF THE YORK COUNTY ZONING ORDINANCE, WITH SUCH LANDSCAPING TO BE MAINTAINED BY THE PROPERTY OWNER(S).

**CURVE DATA**

CURVE	DELTA	RADIUS	LENGTH	TANGENT	CHORD	BEARING
1	17°21'36"	413.99'	125.43'	63.20'	124.95'	N22°00'20"E
2	13°50'04"	413.99'	99.96'	50.22'	99.72'	N06°24'30"E
3	05°19'23"	518.00'	48.12'	24.08'	48.11'	S03°10'13"E
4	08°54'19"	518.00'	80.51'	40.34'	80.43'	N10°17'04"W

APPROXIMATE LOCATION EXISTING ENTRANCE (TYP.)



"TYPE 35 TRANSITIONAL BUFFER"  
NOTE: UPON DEVELOPMENT, THIS BUFFER WILL BE LANDSCAPED IN ACCORDANCE WITH THE REQUIREMENTS SET FORTH IN SECTION 24-59(a)(2) OF THE YORK COUNTY ZONING ORDINANCE, WITH SUCH LANDSCAPING TO BE MAINTAINED BY THE PROPERTY OWNER(S).

**LEGEND**

- INDICATES CONC. MON. FOUND
- INDICATES IRON PIPE FOUND
- INDICATES IRON PIPE TO BE SET
- ▨ INDICATES EXISTING YORK COUNTY DRAINAGE & UTILITY EASEMENT P.B.11, PGS.564-566

APPROVED:  
YORK COUNTY BOARD OF SUPERVISORS  
BY: John T. Chumpe, PE  
PLAT APPROVING AGENT  
DATE: 3-4-97

STATE OF VIRGINIA  
COUNTY OF YORK  
IN THE CLERK'S OFFICE OF THE CIRCUIT COURT FOR THE COUNTY OF YORK, THE 5<sup>th</sup> DAY OF March, 1997. THIS MAP WAS PRESENTED AND ADMITTED TO RECORD AS THE LAW DIRECTS IN PLAT BOOK 12, PAGE 450.

TESTE: Nancy B. Kane, Clerk  
CLERK  
BY: Deirdre B. Hughes, D.C.