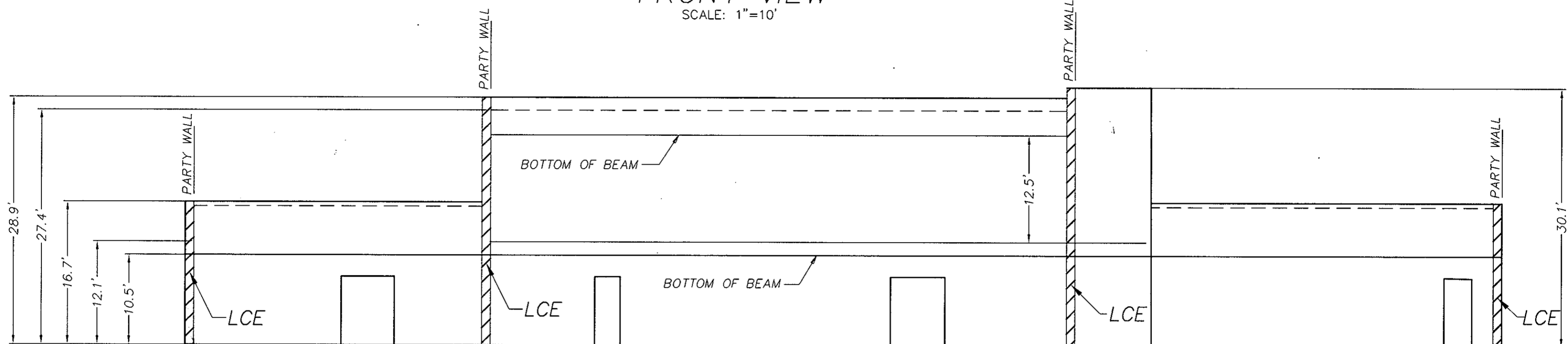


490

FRONT VIEW

SCALE: 1"=10'



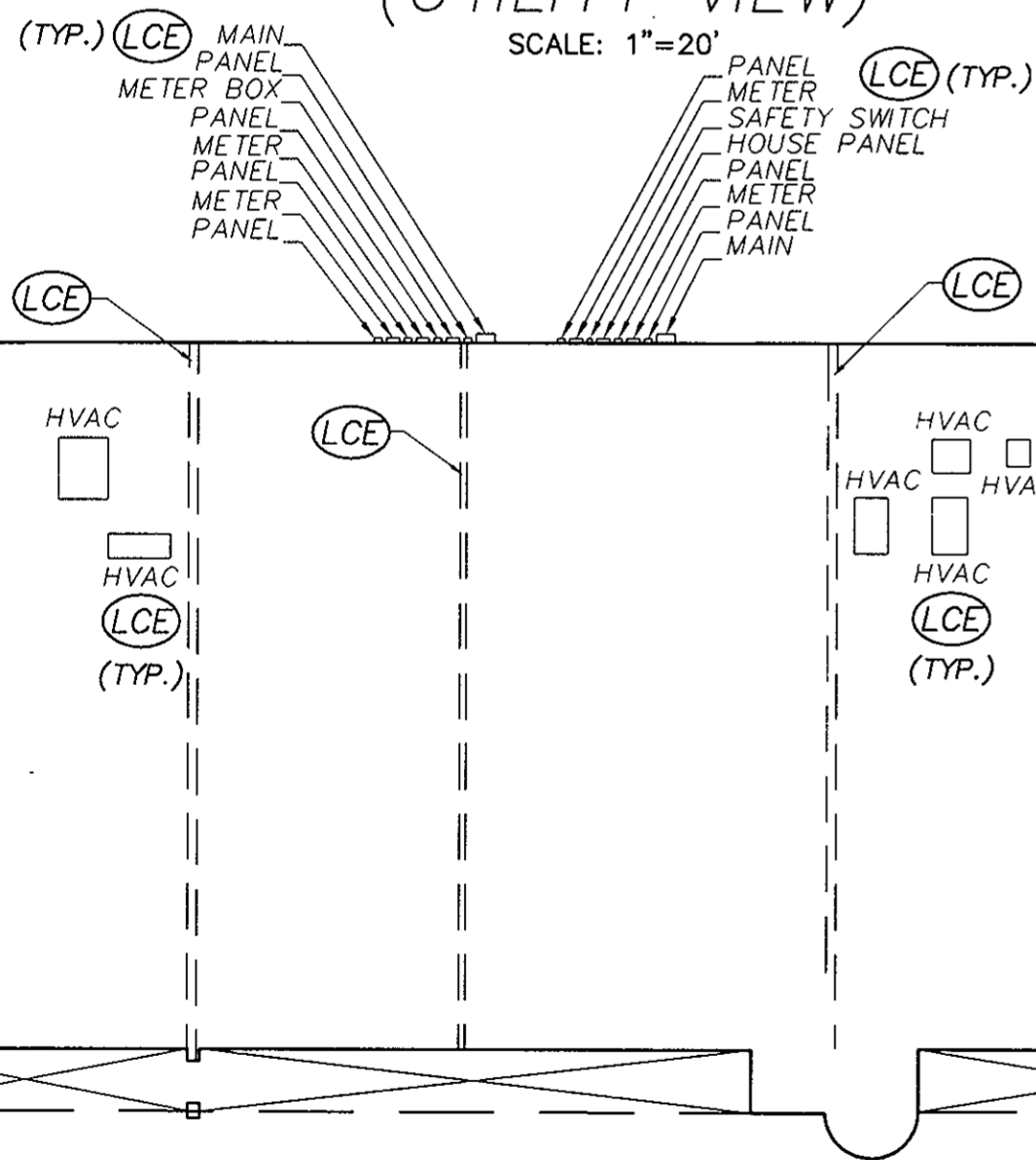
2ND STORY FF= 44.1

1ST STORY FF=37.0

I DO HEREBY CERTIFY THAT I HAVE SURVEYED THE SUBMITTED LAND AND DO FURTHER CERTIFY THAT TO THE BEST OF MY KNOWLEDGE AND BELIEF, THIS PLAT SHOWING LOCATION AND DIMENSIONS OF THE SUBMITTED LAND IS ACCURATE AND THE PLAT COMPLIES WITH THE PROVISIONS OF SECTION 55-79.58 (A) OF THE CODE OF VIRGINIA AS AMENDED. ALL UNITS HAVE BEEN SUBSTANTIALLY COMPLETED.

TOP VIEW
(UTILITY VIEW)

SCALE: 1"=20'



AES CONSULTING ENGINEERS

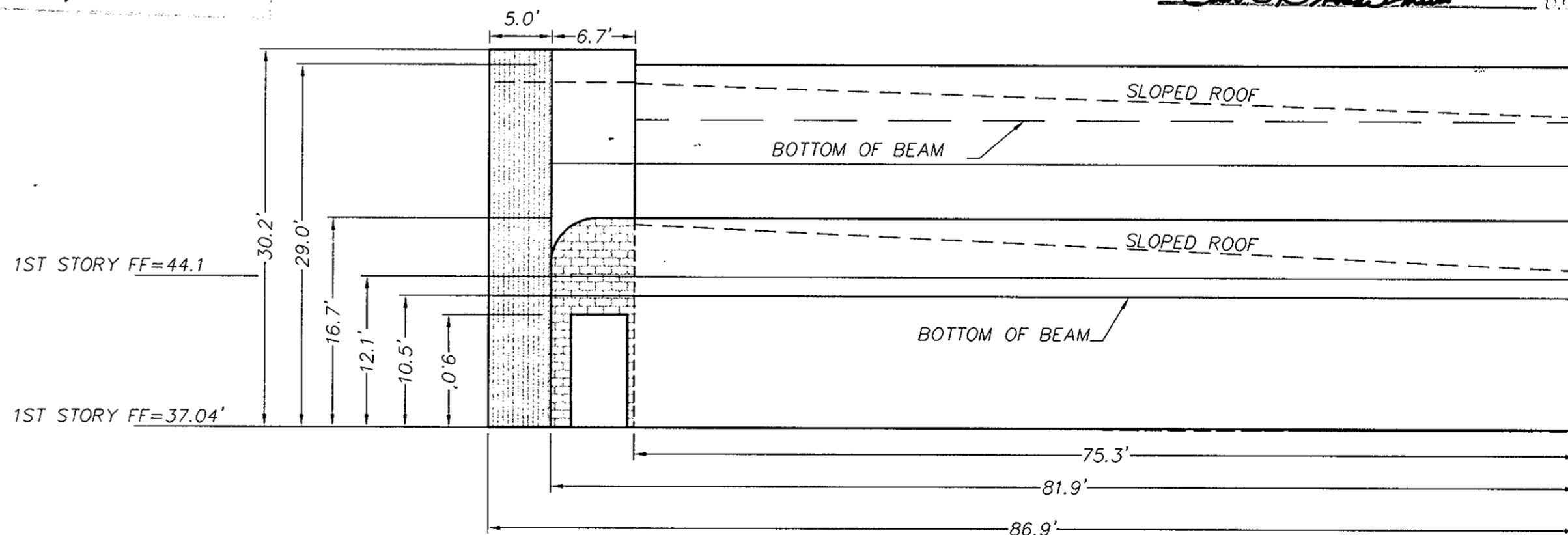
RONALD W. EADS, L.S. #1948

Ronald W. Eads 6-2-97

Sub. agent
7/16/97

RIGHT SIDE VIEW

SCALE: 1"=10'

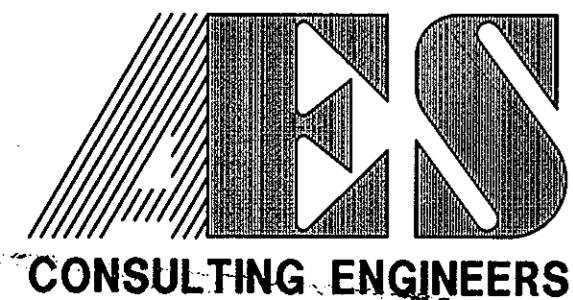


NANCY B. KANE, CLERK

Filed in the Clerk's Office, Circuit Court, York Co., the 18 day of July 1997

Teste: Nancy B. Kane, Clerk

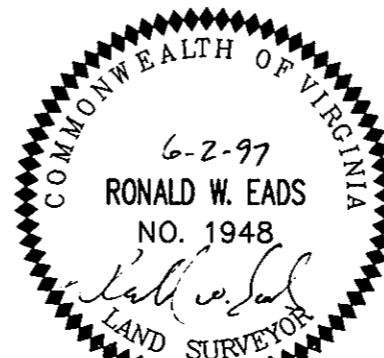
Carol D. ... D.C.



5248 Olde Towne Road, Suite 1
Williamsburg, Virginia 23188
(757) 253-0040
Fax (757) 220-8994

EXHIBIT 2
PLAT OF CONDOMINIUM
TABB LAKES CENTER COMMERCIAL CONDOMINIUMS
UNITS A, B, D, E & F
OWNER/DEVELOPER: TABB CENTER DEVELOPERS

KILN CREEK DISTRICT YORK COUNTY VIRGINIA



No.	DATE	REVISION / COMMENT / NOTE	BY

Designed 000	Drawn TGP
Scale AS SHOWN	Date 06/02/97
Project No. 8166-1	
Drawing No. 3 OF 3	