

PLAT SHOWING VACATION OF PROPERTY LINE  
 BETWEEN LOT 2 AND LOT 3,  
 YORK WAYSIDE AND  
 VARIOUS EASEMENTS TO BE VACATED  
 & DEDICATED  
 SCALE: 1"=40' 3/18/98  
 BRUTON MAGISTERIAL DISTRICT  
 YORK COUNTY, VIRGINIA  
 SHEET 2 OF 2



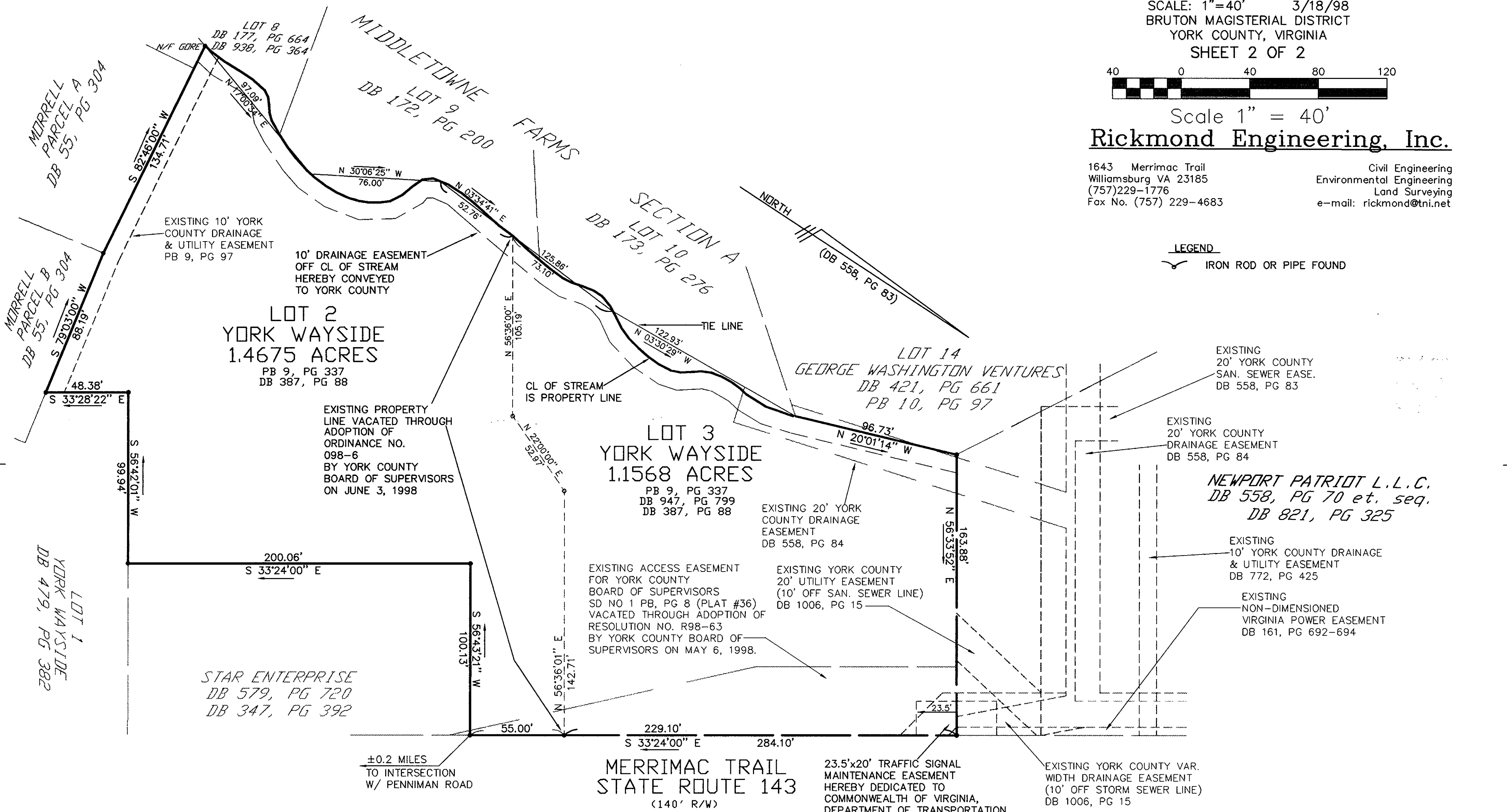
Scale 1" = 40'

**Rickmond Engineering, Inc.**

1643 Merrimac Trail  
 Williamsburg VA 23185  
 (757)229-1776  
 Fax No. (757) 229-4683

Civil Engineering  
 Environmental Engineering  
 Land Surveying  
 e-mail: rickmond@rni.net

**LEGEND**  
 IRON ROD OR PIPE FOUND



BOUNDARY AND ADJOINER INFORMATION FROM PLAT ENTITLED  
 "ALTA/ACSM LAND TITLE SURVEY OF LOT 2 RESUBDIVISION  
 OF YORK WAYSIDE", BY HGP, INC., DATED 11/17/97



APPROVED:  
 YORK COUNTY BOARD OF SUPERVISORS  
 BY: [Signature]  
 PLAT APPROVING AGENT  
 DATE: 2-9-99

STATE OF VIRGINIA  
 COUNTY OF YORK  
 IN THE CLERK'S OFFICE OF THE CIRCUIT COURT FOR THE  
 COUNTY OF YORK THIS 11th OF Feb 1999 THIS  
 MAP WAS PRESENTED AND ADMITTED TO RECORD AS THE  
 LAW DIRECTS IN PLAT BOOK 12 PAGE 673

TESTE: Nancy B. Kane  
 CLERK  
 BY: [Signature]