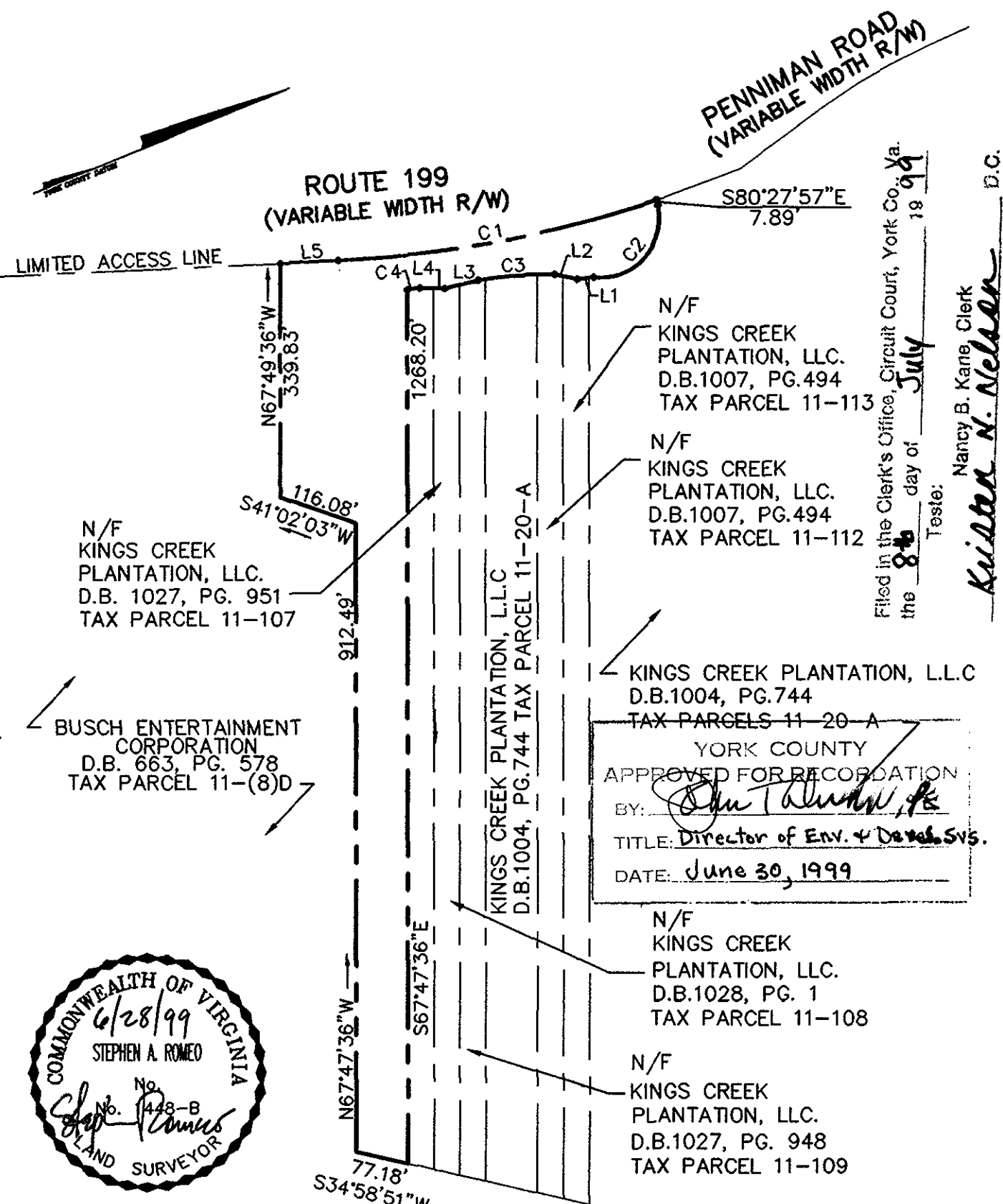


CURVE TABLE						
CURVE	LENGTH	RADIUS	TANGENT	CHORD	CHORD BEARING	DELTA
C1	472.68'	1705.02'	237.86'	471.17'	N11°36'02"E	15°53'02"
C2	163.09'	85.59'	120.38'	139.51'	N25°52'46"W	109°10'22"
C3	111.04'	611.62'	55.67'	110.89'	S18°07'39"W	10°24'09"
C4	18.20'	1755.02'	9.10'	18.20'	S16°01'09"W	0°35'39"

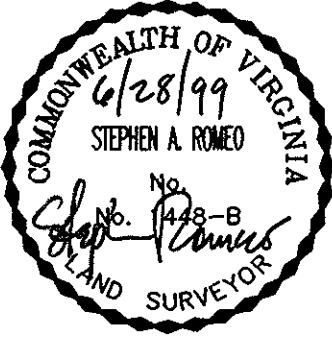
LINE TABLE		
LINE	LENGTH	BEARING
L1	24.21'	N15°40'36"E
L2	33.85'	N33°23'36"E
L3	50.45'	S08°03'26"W
L4	35.91'	S23°08'48"W
L5	84.57'	N19°32'33"E



Filed in the Clerk's Office, Circuit Court, York Co., Va.
 the 8th day of July 1999
 Tester: Nancy B. Kane, Clerk
Kristen N. Nelson D.C.

KINGS CREEK PLANTATION, L.L.C.
 D.B.1004, PG.744
 TAX PARCELS 11-20-A

YORK COUNTY
 APPROVED FOR RECORDATION
 BY: [Signature]
 TITLE: Director of Env. & Devel. Svs.
 DATE: June 30, 1999



BUSCH ENTERTAINMENT CORPORATION
 D.B. 663, PG. 578
 TAX PARCEL 11-(8)D

REFERENCES:
 P.B. 12, PG. 569-70
 D.B.261, PG.352
 D.B.276, PG.669
 HWY PB.4, PG.127

PLAT OF THE PROPERTY OF
 COMMONWEALTH OF VIRGINIA
 CONTAINING A TOTAL OF 3.7169 ACRES
 CONVEYED TO
KINGS CREEK PLANTATION, L.L.C.
 BRUTON DISTRICT YORK COUNTY, VIRGINIA



Langley and McDonald, P.C. SCALE: 1"=200'
 Engineers - Surveyors - Planners
 Landscape Architects - Environmental Consultants
 VIRGINIA BEACH WILLIAMSBURG

06/28/99