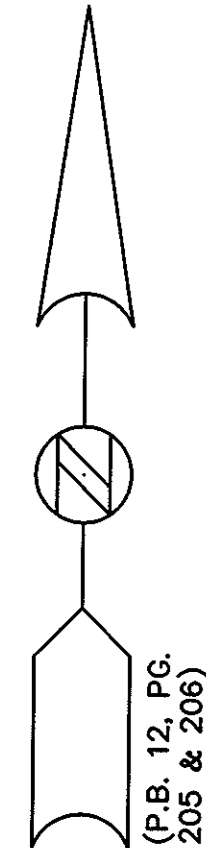


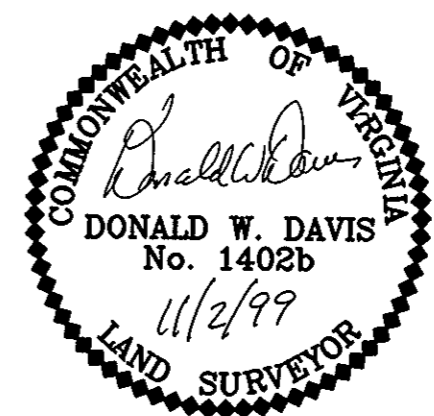
AMENDMENTS:

1. THE BOUNDARY LINES BETWEEN LOTS 102 & 103 AND 86 & 87 HAVE BEEN ADJUSTED.
2. THE SQUARE FOOTAGE FOR LOT 77 & 84 WAS INCORRECTLY STATED ON PRIOR SUBDIVISION PLAT AND IS HEREBY CORRECTED.
3. THE SQUARE FOOTAGE FOR LOTS 86 & 87 HAVE BEEN REVISED TO REFLECT THE LOTS NEW BOUNDARY LINES.
4. THE TOTAL LOT AREA, COMMON AREA AND R/W AREA WERE INCORRECTLY STATED ON THE PRIOR SUBDIVISION PLAT AND ARE HEREBY CORRECTED.
5. THE AREA OF COMMON AREA I WAS INCORRECTLY STATED ON THE PRIOR SUBDIVISION PLAT AND IS HEREBY CORRECTED.



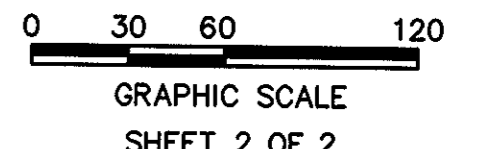
LOT AREA TABULATION TABLE			
LOT	LOT AREA	LOT	LOT AREA
69	3,569 S.F.	87	4,315 S.F.
70	3,569 S.F.	88	5,389 S.F.
71	3,569 S.F.	89	5,192 S.F.
72	3,569 S.F.	90	4,815 S.F.
73	3,569 S.F.	91	4,500 S.F.
74	3,569 S.F.	92	4,563 S.F.
75	3,483 S.F.	93	5,556 S.F.
76	3,523 S.F.	94	4,512 S.F.
77	4,461 S.F.	95	4,343 S.F.
78	3,614 S.F.	96	4,171 S.F.
79	3,654 S.F.	97	4,963 S.F.
80	4,500 S.F.	98	4,807 S.F.
81	3,600 S.F.	99	4,726 S.F.
82	3,600 S.F.	100	4,349 S.F.
83	4,500 S.F.	101	4,175 S.F.
84	4,624 S.F.	102	4,842 S.F.
85	4,709 S.F.	103	4,655 S.F.
86	4,835 S.F.	104	4,586 S.F.

TANGENT TABLE		
NUMBER	DIRECTION	DISTANCE
L1	N 29°30'14" W	20.00'
L2	N 60°29'46" E	74.15'
L3	N 29°30'14" W	50.00'
L4	N 60°29'46" E	74.15'
L5	N 60°29'46" E	40.00'
L6	S 86°06'18" E	40.00'
L7	N 58°43'17" E	50.00'
L8	S 31°16'43" E	40.00'
L9	N 04°33'23" E	49.77'
L10	N 58°43'17" E	50.00'
L11	N 58°43'17" E	50.00'
L12	S 31°16'43" E	50.00'
L13	S 29°30'14" E	50.00'
L14	S 85°26'37" E	45.00'
L15	S 86°02'38" E	64.99'
L16	S 76°59'30" E	43.05'
L17	N 60°29'46" E	10.85'
L18	N 60°29'46" E	10.85'
L19	S 31°16'43" E	5.00'



CORRECTED SUBDIVISION PLAT OF
WILLOW LAKES
 SECTION TWO

WITH BOUNDARY LINE ADJUSTMENTS TO LOTS 86, 87, 102 & 103
 NELSON MAGISTERIAL DISTRICT
 COUNTY OF YORK, VIRGINIA
 SCALE: 1" = 60' DATE: 2 NOV. 1999
DAVIS & ASSOCIATES, P.C.
 3630 GEORGE WASHINGTON
 MEMORIAL HIGHWAY - SUITE "G"
 YORKTOWN, VIRGINIA 23693
 (757) 867-8583



SHEET 2 OF 2
 - SYMBOLS -

- 20' --- DENOTES MINIMUM BUILDING SETBACK LINE
- 10' --- DENOTES EXISTING YORK COUNTY DRAINAGE EASEMENT
- 10' --- DENOTES EXISTING YORK COUNTY UTILITY EASEMENT
- 20' --- DENOTES IRON PIPE FOUND
- 20' --- DENOTES IRON PIPES TO BE SET AT ALL PROPERTY LINE JUNCTURES
- 20' --- DENOTES CONCRETE MONUMENT FOUND
- 20' --- DENOTES CONCRETE MONUMENT TO BE SET

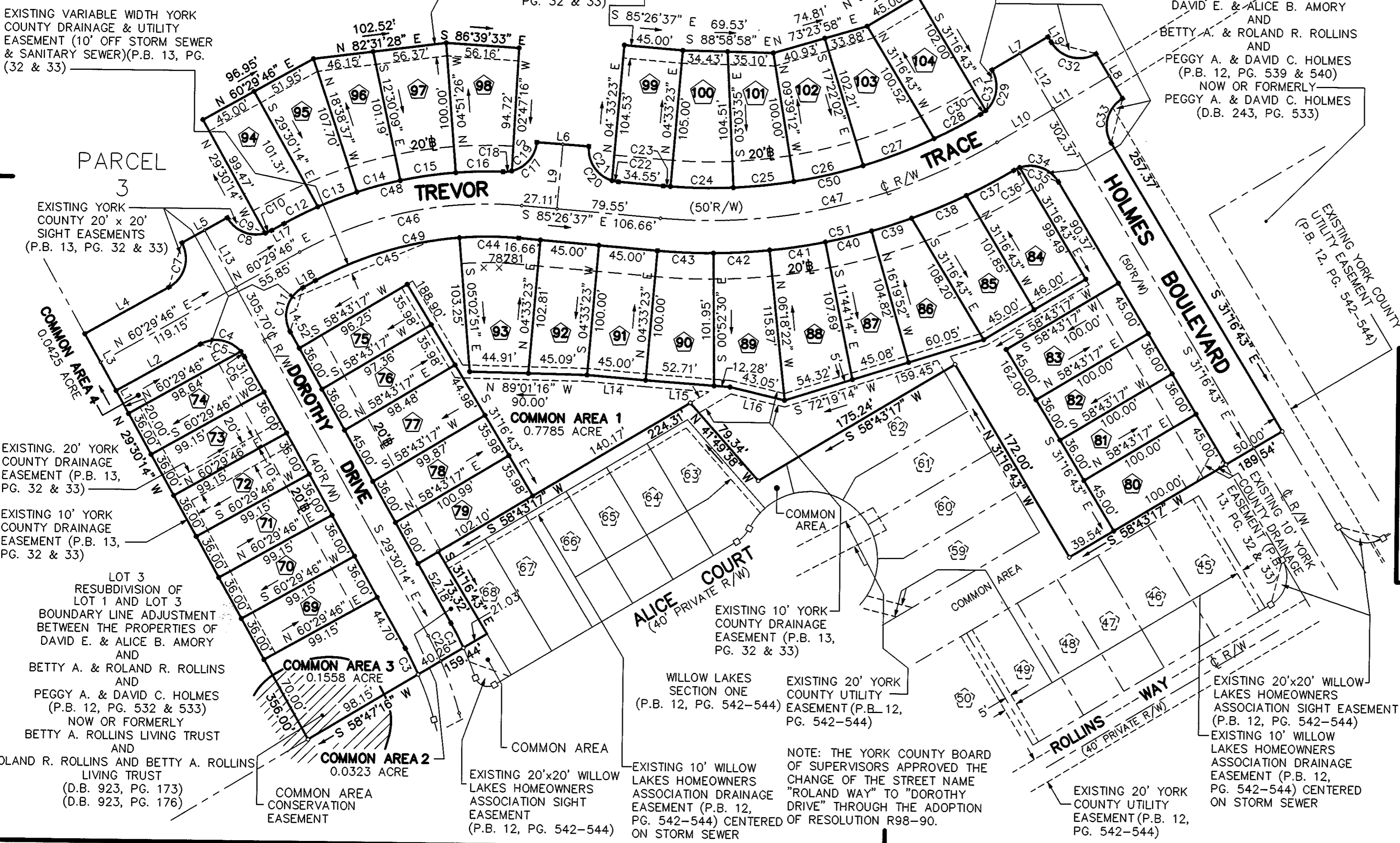
LOT 1
 RESUBDIVISION OF
 LOT 1 AND LOT 2
 AND
 LOT 1 AND LOT 3
 BOUNDARY LINE ADJUSTMENT
 BETWEEN THE PROPERTIES OF
 DAVID E. & ALICE B. AMORY
 AND
 BETTY A. & ROLAND R. ROLLINS
 AND
 PEGGY A. & DAVID C. HOLMES
 (P.B. 12, PG. 539 & 540)
 NOW OR FORMERLY
 WILLOW LAKES, L.L.C.,
 A VIRGINIA LIMITED LIABILITY COMPANY
 (D.B. 100, PG. 161)

NOTE: THE PROPERTY SHOWN HEREON IS ZONED
 PD (PLANNED DEVELOPMENT - AFFORDABLE
 HOUSING INCENTIVE PROVISIONS)

LOT 2
 RESUBDIVISION OF
 LOT 1 AND LOT 2
 AND LOT 1 AND LOT 3
 BOUNDARY LINE ADJUSTMENT
 BETWEEN THE PROPERTIES OF
 DAVID E. & ALICE B. AMORY
 AND
 BETTY A. & ROLAND R. ROLLINS
 AND
 PEGGY A. & DAVID C. HOLMES
 (P.B. 12, PG. 539 & 540)
 NOW OR FORMERLY
 PEGGY A. & DAVID C. HOLMES
 (D.B. 243, PG. 533)

EXISTING VARIABLE WIDTH YORK
 COUNTY DRAINAGE & UTILITY
 EASEMENT (10' OFF STORM SEWER
 & SANITARY SEWER) (P.B. 13, PG.
 (32 & 33))

NOTE: CONSERVATION EASEMENT: (SEE
 SECTION 5.14 OF THE DECLARATION
 OF COVENANTS AND RESTRICTIONS
 APPLICABLE TO WILLOW LAKES)



APPROVED
 YORK COUNTY BOARD OF SUPERVISORS
 BY: Al Maddalena
 PLAT APPROVING AGENT
 DATE: 3/14/00

STATE OF VIRGINIA
 COUNTY OF YORK
 IN THE CLERK'S OFFICE OF THE CIRCUIT
 COURT FOR THE COUNTY OF YORK THE 15th
 DAY OF March 2000, THIS MAP WAS
 PRESENTED AND ADMITTED TO RECORD AS
 THE LAW DIRECTS IN PLAT BOOK 13,
 PAGE 101.

TESTE: Lynn S. Jenkins
 CLERK
 BY: Dunde Hughes P.C.

LOT 3
 RESUBDIVISION OF
 LOT 1 AND LOT 3
 BOUNDARY LINE ADJUSTMENT
 BETWEEN THE PROPERTIES OF
 DAVID E. & ALICE B. AMORY
 AND
 BETTY A. & ROLAND R. ROLLINS
 AND
 PEGGY A. & DAVID C. HOLMES
 (P.B. 12, PG. 532 & 533)
 NOW OR FORMERLY
 BETTY A. ROLLINS LIVING TRUST
 AND
 ROLAND R. ROLLINS AND BETTY A. ROLLINS
 LIVING TRUST
 (D.B. 923, PG. 173)
 (D.B. 923, PG. 176)

WILLOW LAKES
 SECTION ONE
 (P.B. 12, PG. 542-544)

NOTE: THE YORK COUNTY BOARD
 OF SUPERVISORS APPROVED THE
 CHANGE OF THE STREET NAME
 "ROLAND WAY" TO "DOROTHY
 DRIVE" THROUGH THE ADOPTION
 OF RESOLUTION R98-90.

EXISTING 20'x20' WILLOW
 LAKES HOMEOWNERS
 ASSOCIATION SIGHT EASEMENT
 (P.B. 12, PG. 542-544)
 EXISTING 10' WILLOW
 LAKES HOMEOWNERS
 ASSOCIATION DRAINAGE
 EASEMENT (P.B. 12,
 PG. 542-544) CENTERED
 ON STORM SEWER