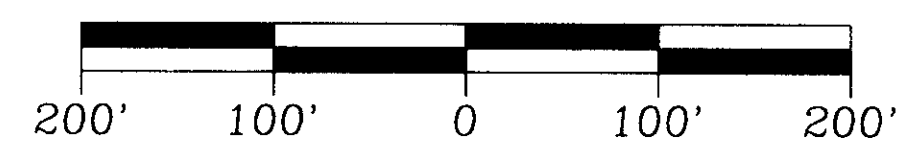


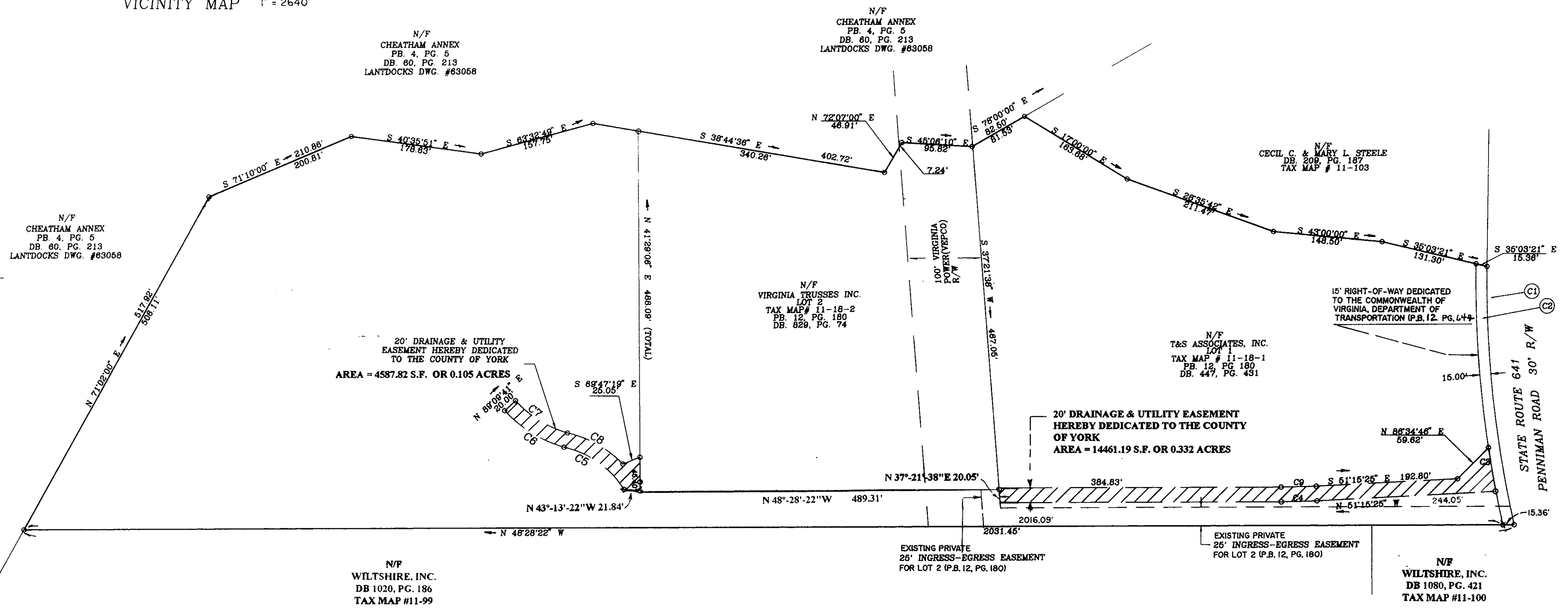
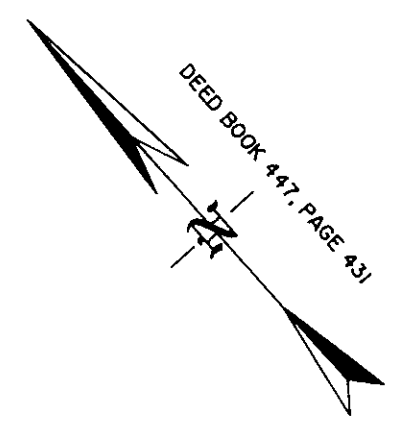
**PLAT OF EASEMENT DEDICATION**  
**FROM: STANLEY B. TRELEAVEN**  
**AND WILLIAM A. SHARMAN**  
**T/A T&S ASSOCIATES, INC.**

**TO: THE COUNTY OF YORK**  
**LOCATED: BRUTON MAGISTERIAL DISTRICT**  
**COUNTY OF YORK, VIRGINIA**  
**DATE: JULY 3, 1995 SCALE: 1" = 100'**

REVISED: FEBRUARY 5, 1996  
 REVISED: OCTOBER 7, 1996  
 REVISED DATE: JUNE 1, 2000



VICINITY MAP 1" = 2640'



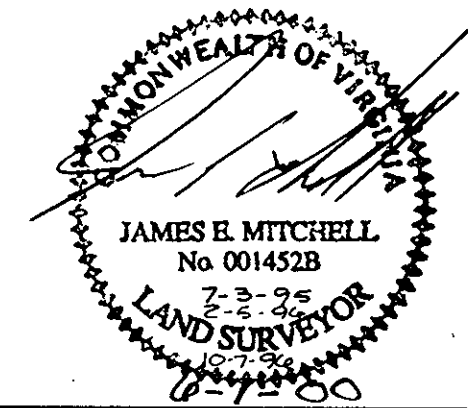
**CURVE DATA**

NO.	RADIUS	DELTA	TANGENT	ARC	CHORD	CH BEARING
C1	1504.54'	13°28'40"	177.33'	353.04'	352.23'	S 35°45'48" W
C2	1519.54'	13°28'39"	179.10'	356.55'	355.73'	N 35°53'16" E
C3	1519.54'	02°16'44"	30.22'	60.44'	60.44'	S 32°02'17" W
C4	993.00'	02°47'03"	24.13'	48.26'	48.24'	N 49°51'43" W
C5	130.36'	45°03'20"	54.07'	102.51'	99.89'	N 13°25'01" W
C6	173.98'	31°31'50"	49.12'	95.74'	94.54'	N 18°38'14" W
C7	153.98'	31°18'48"	43.18'	84.15'	83.11'	S 16°29'44" E
C8	150.38'	33°21'44"	45.08'	87.55'	86.32'	S 19°00'37" E
C9	973.00'	02°47'03"	23.65'	47.28'	47.28'	S 41°31'10" E

NOTE: THE RECORDATION OF THIS PLAT SHALL OPERATE TO TRANSFER TO THE COUNTY OF YORK ANY EASEMENT INDICATED ON THE PLAT FOR DRAINAGE AND/OR SANITARY SEWER TO CREATE A PUBLIC RIGHT-OF-PASSAGE OVER THE SAME, UNLESS OTHERWISE NOTED ON THIS PLAT.

NOTE: DRAINAGE AND UTILITY EASEMENTS CONVEYED TO THE COUNTY BY RECORDATION OF THIS PLAT SHALL BE EXCLUSIVE TO THE COUNTY, UNLESS OTHERWISE NOTED. CONVEYANCE OF SUCH EASEMENTS TO THE COUNTY ALSO INCLUDE: (I) THE RIGHT OF INGRESS AND EGRESS OVER THE OWNER'S LAND ADJACENT TO THE EASEMENT AS NECESSARY TO INSPECT, MAINTAIN AND OPERATE THE COUNTY'S FACILITIES WITHIN THE EASEMENT AND (II) THE RIGHT OF THE COUNTY TO ASSIGN TO OTHERS FROM TIME TO TIME THE RIGHT TO LOCATE FACILITIES THEREIN SERVING THE PUBLIC, INCLUDING, BUT NOT LIMITED TO, WATER, ELECTRIC, TELEPHONE COMMUNICATIONS, AND GAS UTILITY FACILITIES.

Filed in the Clerk's Office, Circuit Court, York Co., VA  
 this 4 day of August, 2000  
 Teste: Lynn S. Jenkins, Clerk  
 by Stacy White D.O.



YORK COUNTY  
 APPROVED FOR RECORDATION  
 BY: *Al Maddalena*  
 TITLE: Director, Env. & Devel. Svs.  
 DATE: 8/1/00

MITCHELL-WILSON ASSOCIATES, P.C.  
 CIVIL ENGINEERS AND LAND SURVEYORS  
 P.O. BOX 1269  
 720 MAIN STREET, SUITE 112, 2ND FLOOR  
 WEST POINT, VIRGINIA 23181  
 (804)843-9744