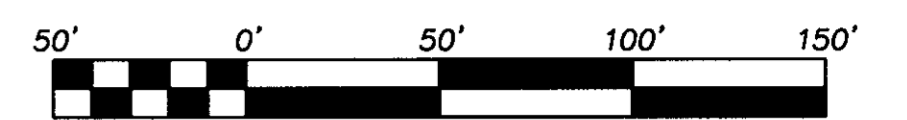


SUBDIVISION
OF
WILLIAMSBURG BLUFFS
SECTION II, PHASE 2

BRUTON MAGISTERIAL DISTRICT, YORK COUNTY, VIRGINIA
JULY 13, 2000 SHEET 2 OF 3



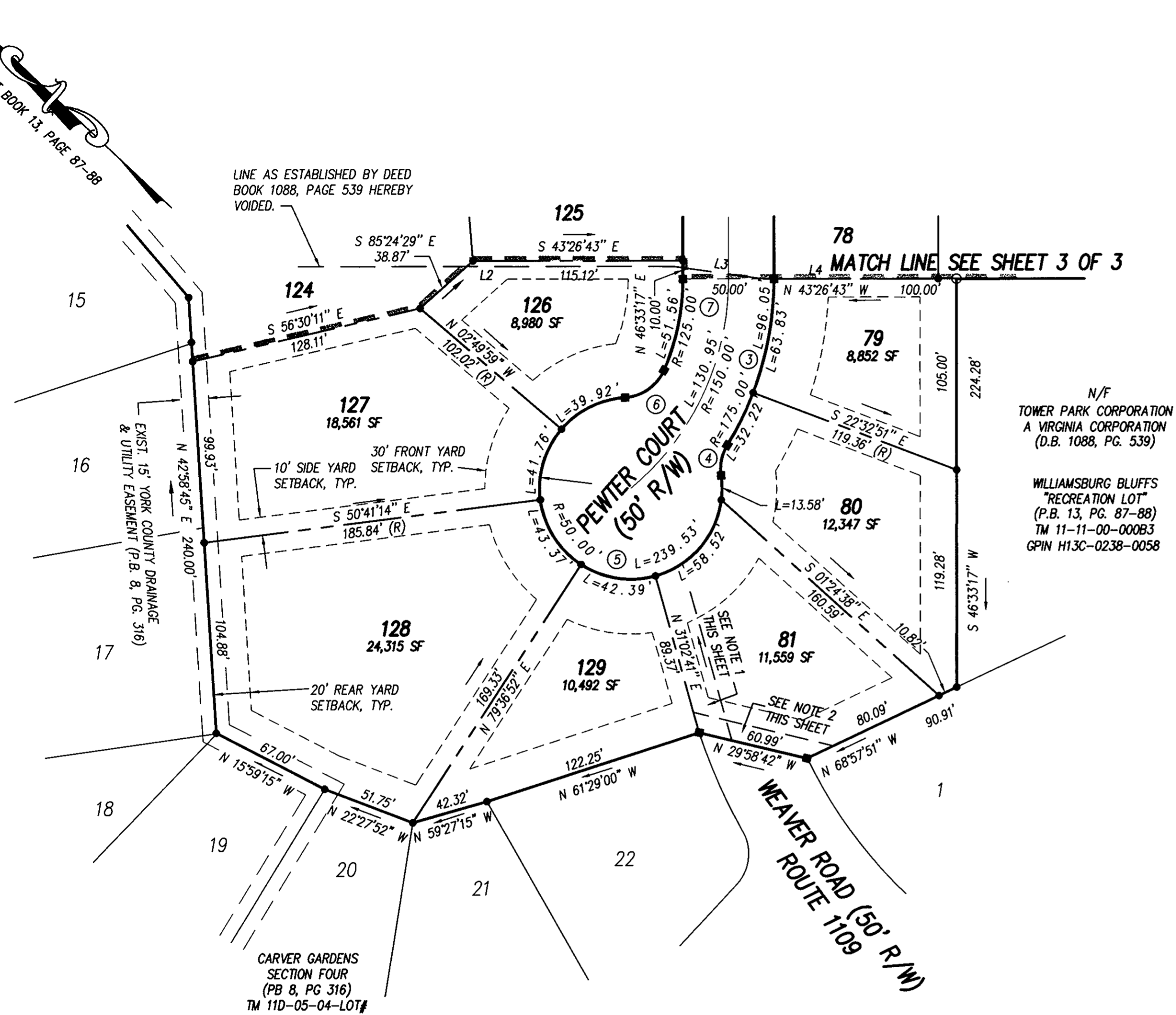
SCALE 1" = 50'

Rickmond Engineering, Inc.

Engineering Surveying Land Planning
1643 Merrimac Trail Williamsburg, VA 23185
Voice: (757)229-1776 Fax: (757)229-4683
Vint Hill • P.O. Box 861647 Warrenton, VA 20187
Voice: (540)349-7730 Fax: (540)349-7731
www.rickmond.com

Rickmond

- NOTES:
1) 16' EMERGENCY ACCESS EASEMENT HEREBY CONVEYED TO YORK COUNTY.
2) 10' RESTRICTED ACCESS EASEMENT HEREBY CONVEYED TO YORK COUNTY.



CURVE TABLE

NUMBER	RADIUS	LENGTH	DELTA	TANGENT	CHORD BEARING	CHORD
1	1057.00	36.74	01°59'30"	18.37	S 44°26'28" E	36.74
2	25.00	39.27	90°00'00"	25.00	S 88°26'43" E	35.36
3	175.00	96.05	31°26'48"	49.27	S 62°16'33" E	94.85
4	25.00	17.27	39°34'16"	8.99	N 58°12'56" E	16.93
5	50.00	239.53	274°28'43"	46.24	S 54°19'14" W	67.89
6	25.00	27.37	62°43'31"	15.24	N 78°26'58" W	26.02
7	125.00	51.56	23°38'08"	26.15	N 58°22'21" E	51.20
8	25.00	39.27	90°00'00"	25.00	S 01°33'17" W	35.36
9	25.00	20.96	48°01'46"	11.14	N 67°27'35" W	20.35
10	55.00	265.00	276°03'31"	49.47	S 46°33'17" W	73.56
11	25.00	20.96	48°01'46"	11.14	N 19°25'51" W	20.35
12	25.00	39.27	90°00'00"	25.00	N 88°26'43" W	35.36
13	155.00	215.10	79°30'41"	128.94	N 06°47'58" E	198.25
14	25.00	35.59	81°33'48"	21.57	S 73°44'18" E	32.66
15	50.00	215.72	247°12'00"	75.26	S 09°04'49" W	83.29
16	205.00	335.88	93°52'28"	219.35	S 00°22'57" E	299.55
17	25.00	39.27	90°00'00"	25.00	N 01°33'17" E	35.36
18	15.00	24.08	91°59'30"	15.53	S 89°26'28" E	21.58
19	15.00	23.56	90°00'00"	15.00	S 00°26'14" E	21.21



APPROVED: YORK COUNTY BOARD OF SUPERVISORS
BY: *Al Maddalena* DATE: *11/13/00*
PLAT APPROVING AGENT

STATE OF VIRGINIA
COUNTY OF YORK
IN THE CLERK'S OFFICE OF THE CIRCUIT COURT FOR THE COUNTY OF YORK THIS *16*
DAY OF *NOV*, 2000, THIS MAP WAS PRESENTED AND ADMITTED TO RECORD
AS THE LAW DIRECTS IN PLAT BOOK *13* PAGE *205*.

TESTE: *Lynn S. Jenkins*
CLERK
BY: *Stacy White D.C.*