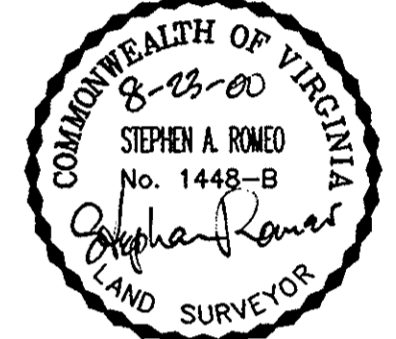
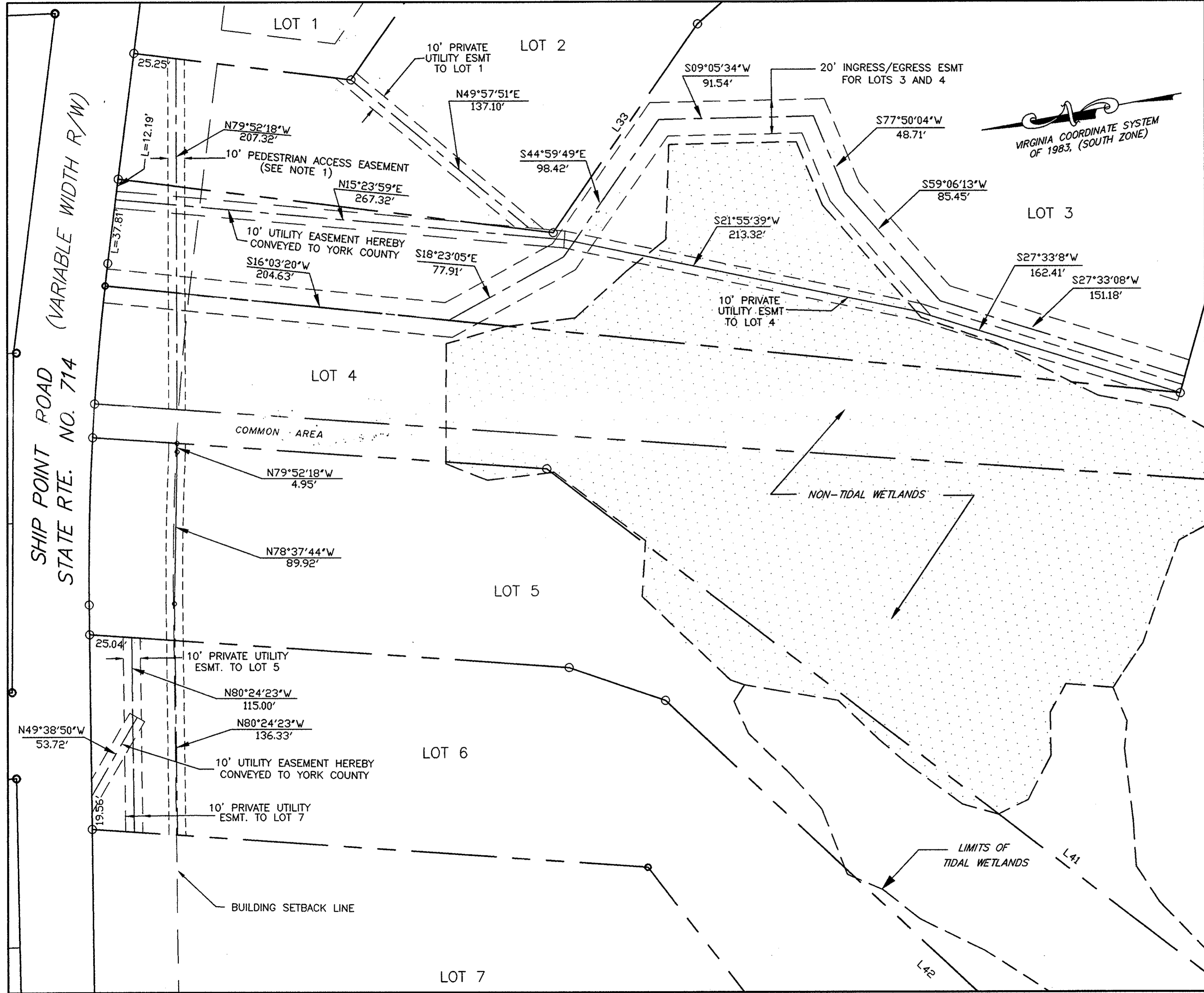


# DETAIL OF EASEMENTS

CHESAPEAKE WATCH  
 BEING A SUBDIVISION OF  
 PROPERTY OF  
**PAMELA C. PEASLEE HUNTER**  
 GRAFTON DISTRICT YORK COUNTY, VIRGINIA  
 DATE: JUNE 9, 2000 SCALE: 1"=40'

**LANDMARK DESIGN GROUP**  
 Engineers • Planners • Surveyors  
 Landscape Architects • Environmental Consultants  
 4029 IRONBOUND ROAD SUITE 100  
 WILLIAMSBURG, VIRGINIA 23188  
 (757) 253-2975 FAX: (757) 229-0049  
 SHEET 4 OF 4



APPROVED:  
 YORK COUNTY BOARD OF SUPERVISORS  
 BY: *Al Maddalena*  
 PLAT APPROVING AGENT  
 DATE: 11-20-00

STATE OF VIRGINIA  
 COUNTY OF YORK  
 IN THE CLERK'S OFFICE OF THE CIRCUIT COURT FOR  
 THE COUNTY OF YORK THE 20 DAY OF NOV  
 2000, THIS MAP WAS PRESENTED AND ADMITTED TO  
 RECORD AS THE LAW DIRECTS IN PLAT BOOK 13  
 PAGE 210

TESTE: *Lyon S. Jenkins*  
 CLERK  
 BY: *Stacy White D.C.*