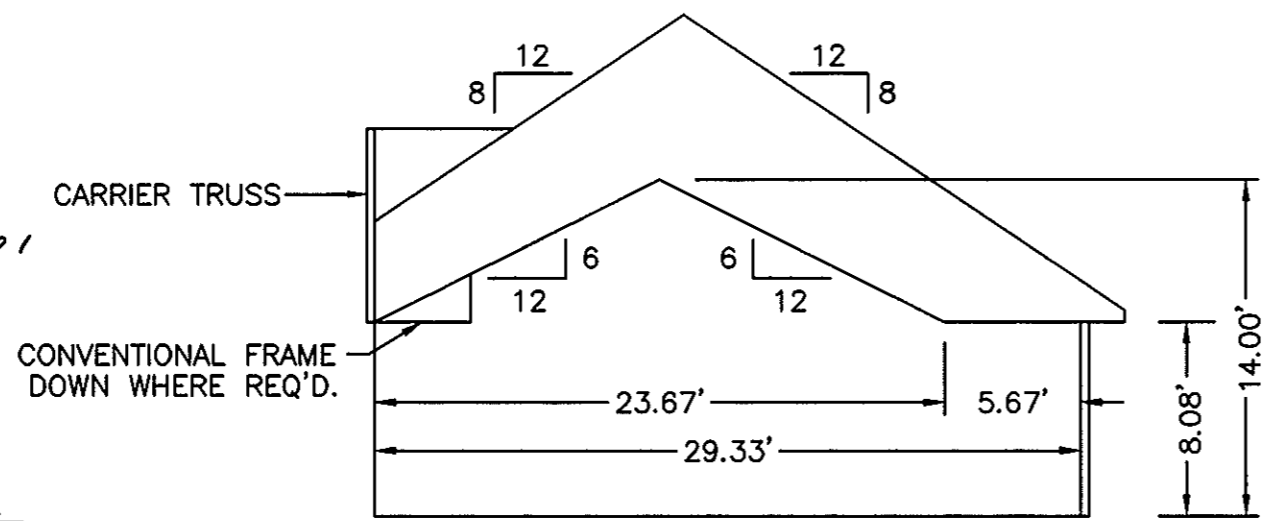
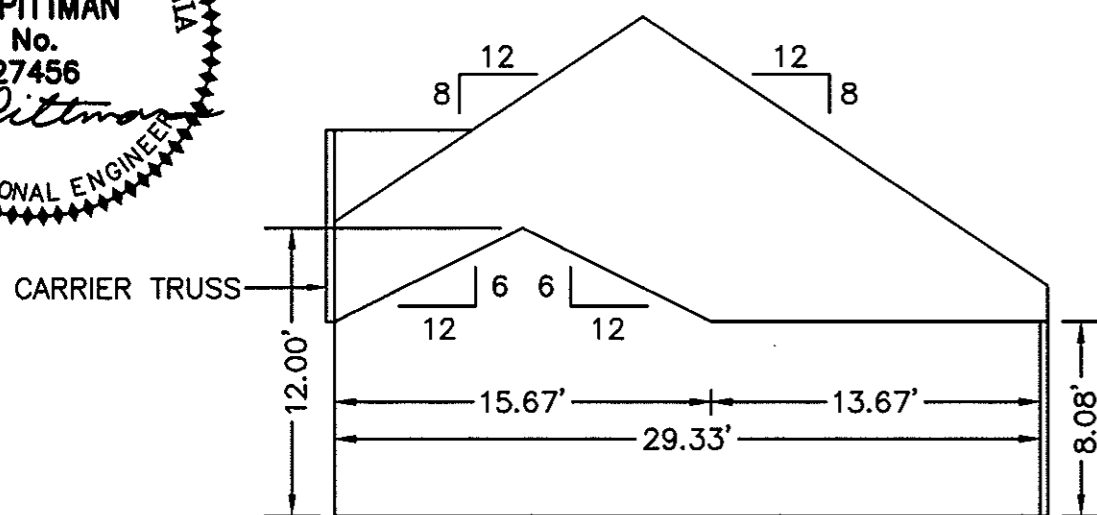


THE UNDERSIGNED CERTIFIES THAT THIS PLAN IS ACCURATE AND COMPLIES WITH THE PROVISIONS OF THE CODE OF VIRGINIA SECTION 55-79.58 (b) AND ALL UNITS DEPICTED HEREON HAVE BEEN SUBSTANTIALLY COMPLETED.

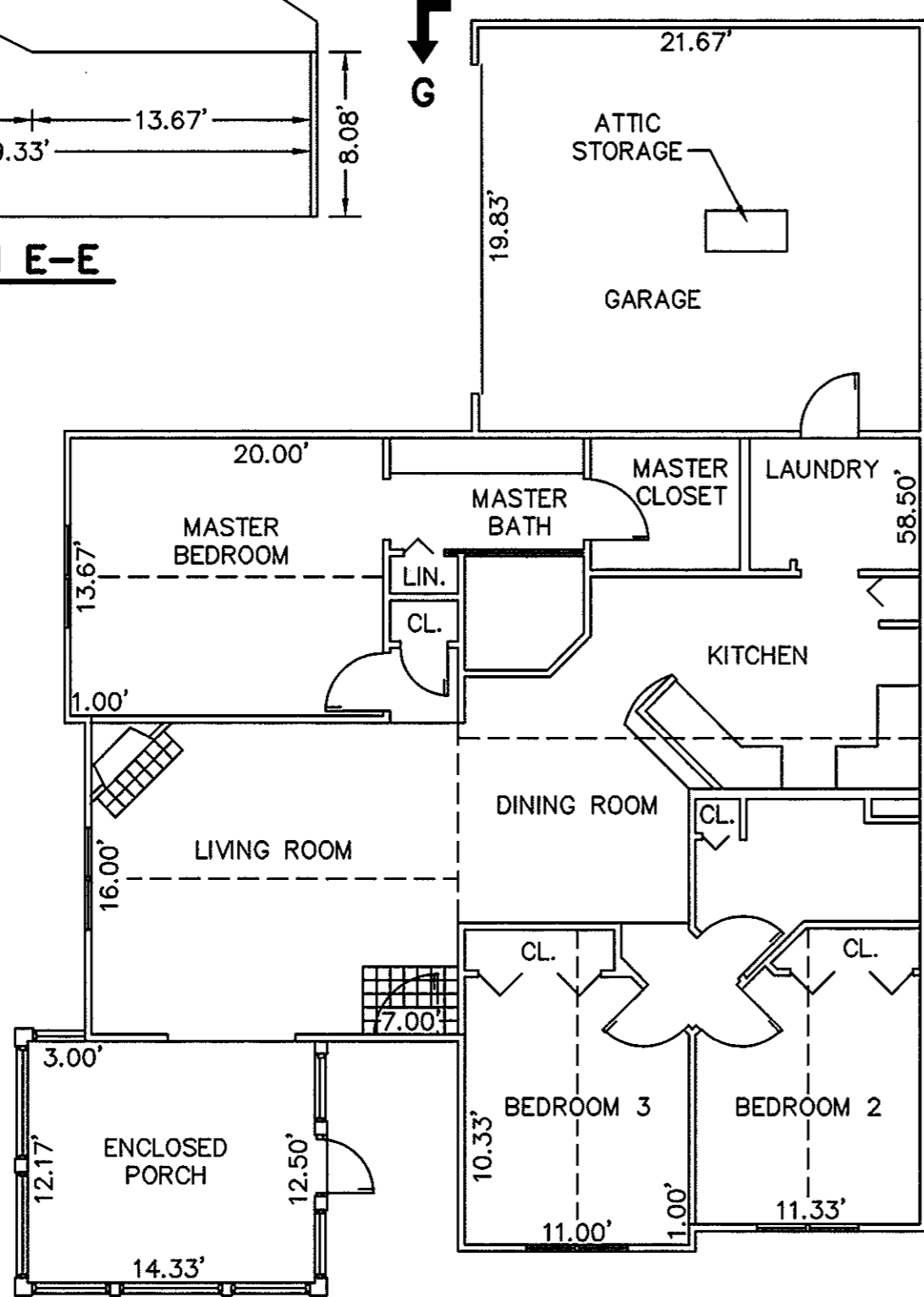
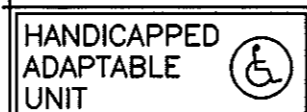
SIGNED: C.L. Pittman DATE: 2/23/2001
C.L. PITTMAN, P.E.



SECTION F-F

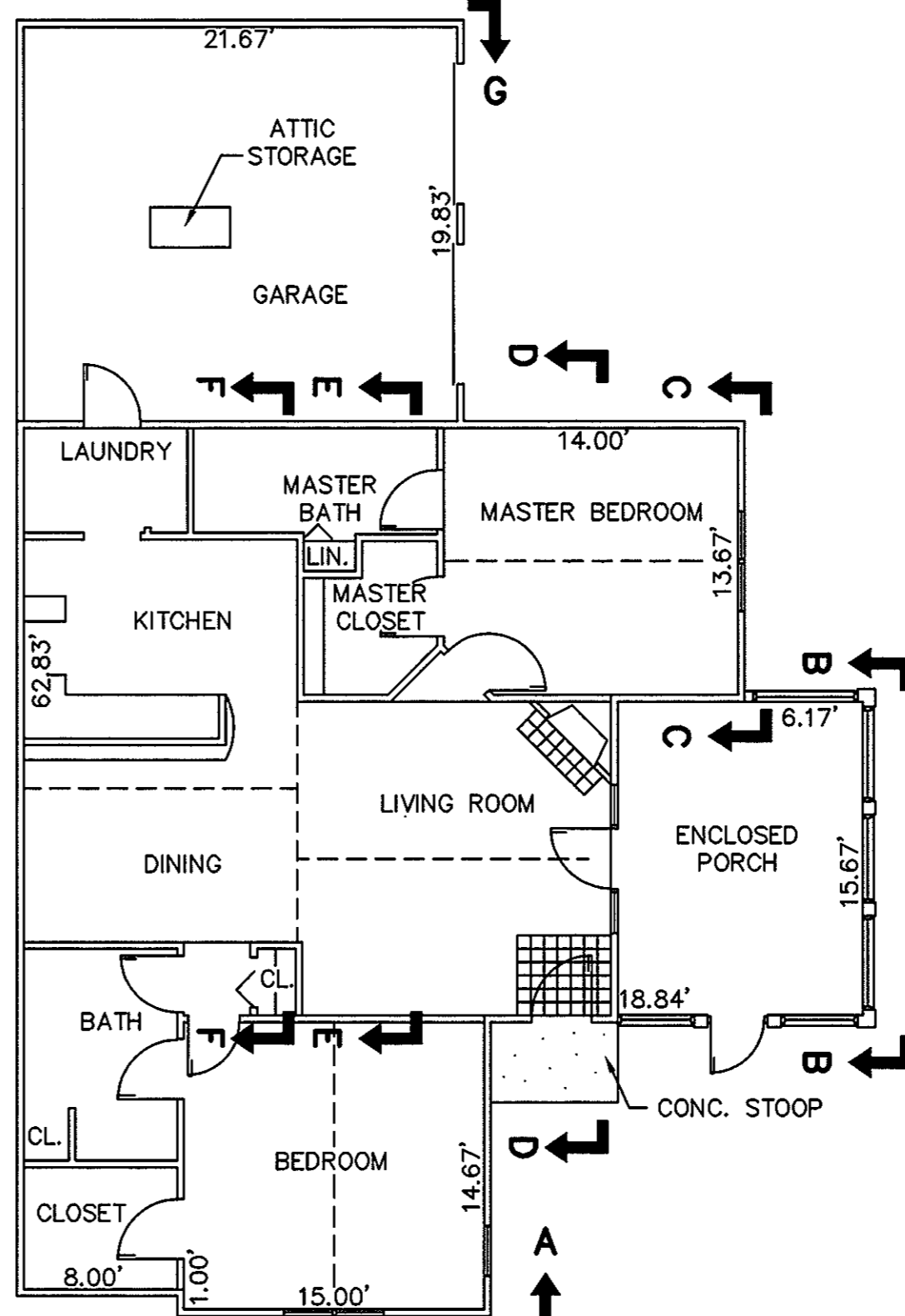


SECTION E-E



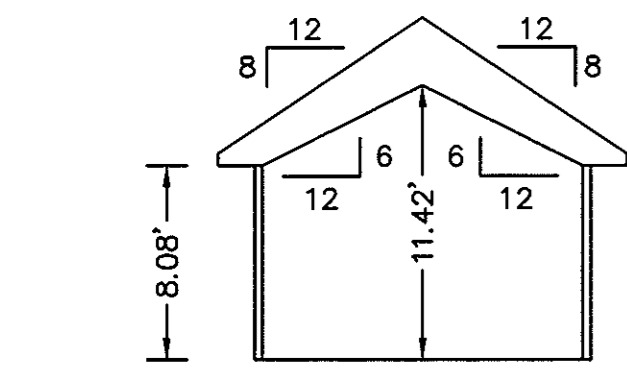
BUILDING 18-1 & 18-3- CANTERBURY

FLOOR PLAN W/ ENCLOSED PORCH

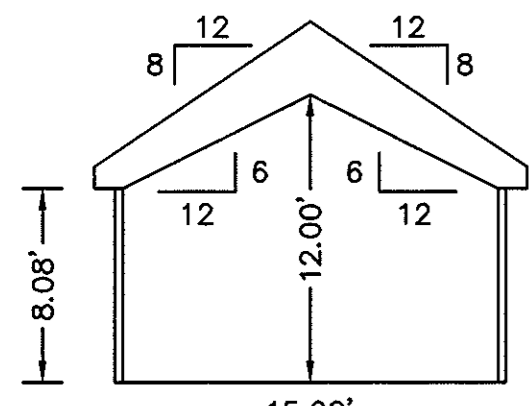


BUILDING 18-2 & 18-4- ABBEY

FLOOR PLAN W/ ENCLOSED PORCH



SECTION C-C



SECTION B-B ENCLOSED PORCH

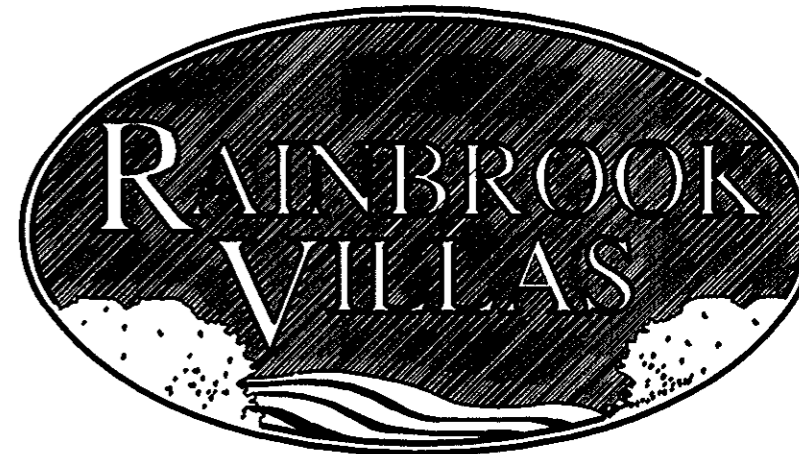
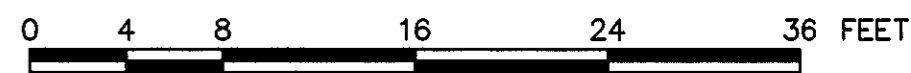


EXHIBIT "D"

PLAT OF RAINBROOK VILLAS A CONDOMINIUM PHASE V

SHEET 4 OF 4

GRAFTON DISTRICT - COUNTY OF YORK, VIRGINIA
SCALE: 1/8" = 1'-0" FEBRUARY 5, 2001



GRAPHIC SCALE

THE SIRINE GROUP, LTD.

SURVEYORS • ENGINEERS • PLANNERS
4794 GEORGE WASHINGTON MEMORIAL HIGHWAY
U.S. ROUTE 17
P.O. BOX 450
WHITE MARSH, VIRGINIA 23183

APPROVED:
YORK COUNTY BOARD OF SUPERVISORS

BY: Al Maddalena

DATE: 2/27/01

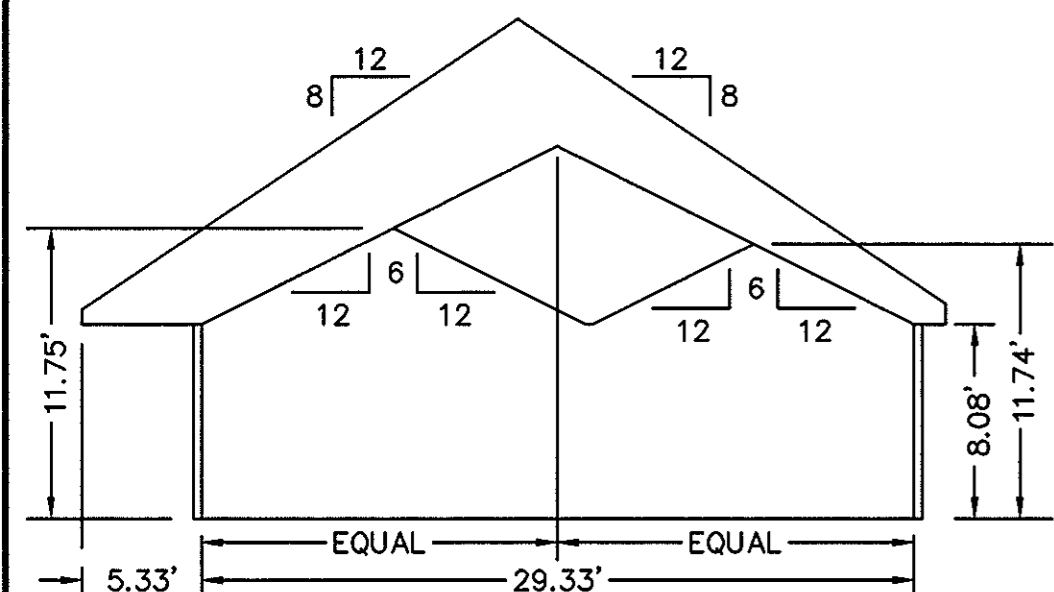
NOTES:
1. ALL BUILDING DIMENSIONS SHOWN HEREON ARE INTERIOR DIMENSIONS AND ARE IN FEET.

STATE OF VIRGINIA
COUNTY OF YORK

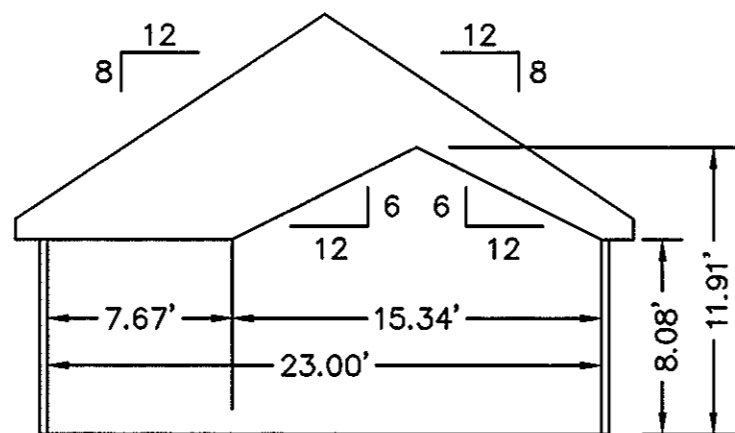
IN THE CLERK'S OFFICE OF THE CIRCUIT COURT FOR THE COUNTY OF YORK THE 27th DAY OF Feb., 2001, THIS PLAT WAS PRESENTED AND ADMITTED TO RECORD AS THE LAW DIRECTS IN PLAT BOOK 13, PAGE 254.

TESTE: Lynn S. Jenkins
CLERK

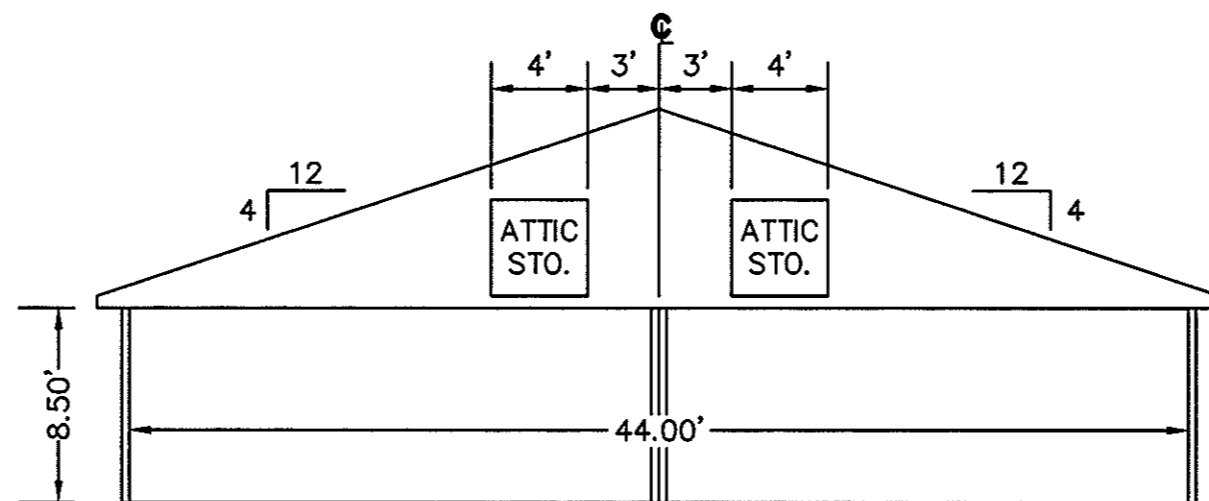
BY: S. White D.C.



SECTION D-D



SECTION A-A



SECTION G-G GARAGE