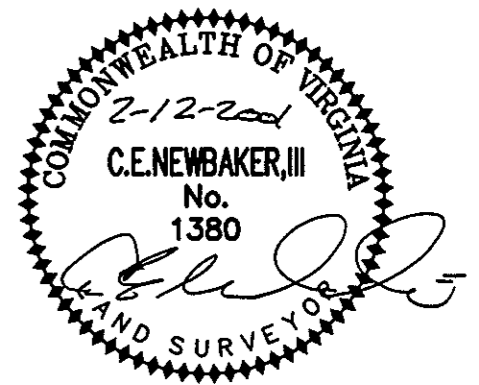
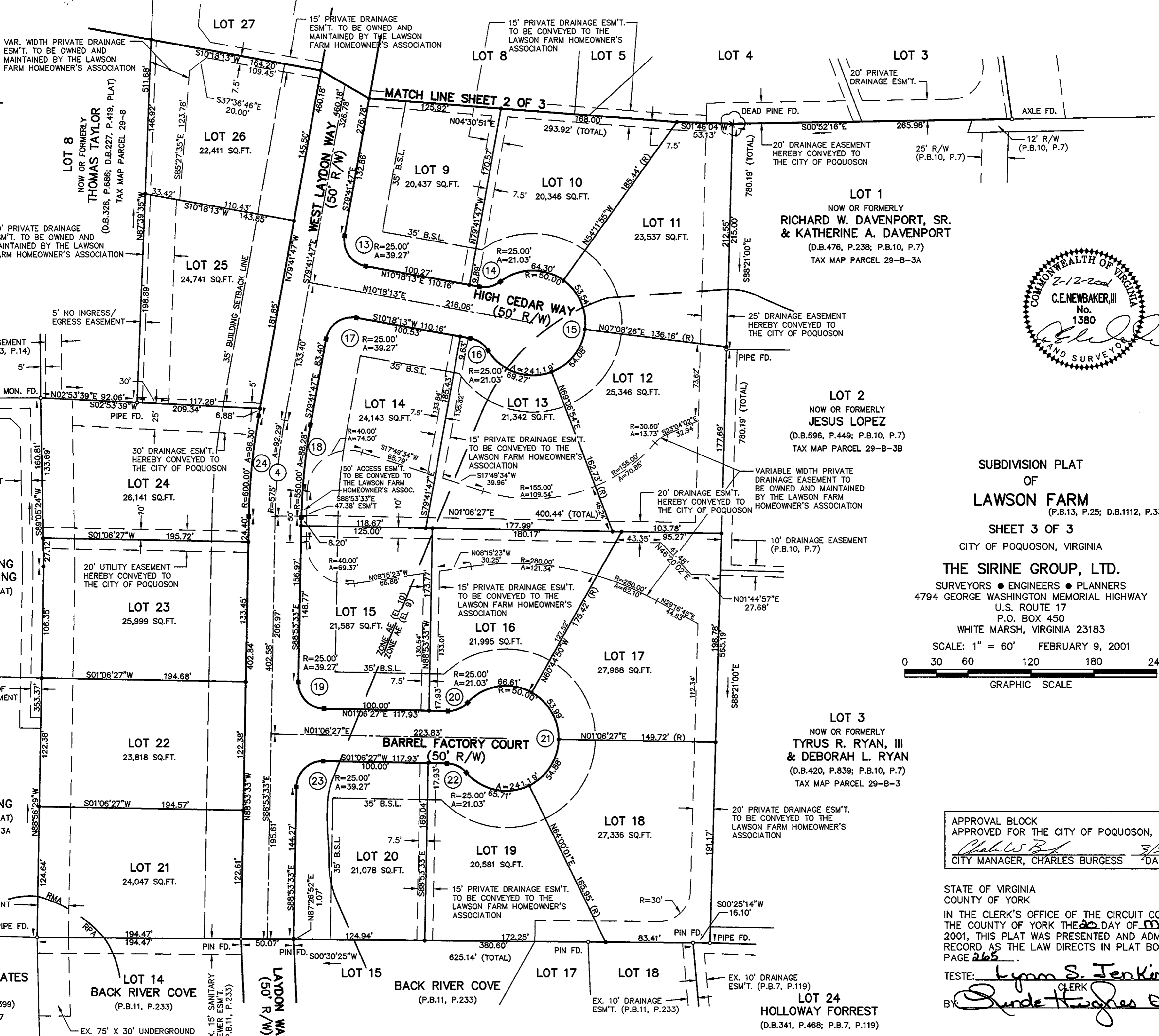


NOW OR FORMERLY  
**JONATHAN W. WALLACE  
& GENINE M. WALLACE**  
(D.B.910, P.414)  
TAX MAP PARCEL 29-1-5

**PARCEL "A"**  
NOW OR FORMERLY  
**WARREN K. TOPPING  
& DENISE L. TOPPING**  
(D.B.864, P.375; P.377 PLAT)  
TAX MAP 29-1-13

**PARCEL "B"**  
NOW OR FORMERLY  
**RONALD T. TOPPING**  
(D.B.943, P.268; P.270 PLAT)  
TAX MAP PARCEL 29-1-13A

**LOT 67  
CEDAR LANDING ESTATES  
SECTION FOUR**  
(D.B.303, P.244; P.B.8, P.399)  
TAX MAP PARCEL 29-67



**SUBDIVISION PLAT  
OF  
LAWSON FARM**  
(P.B.13, P.25; D.B.1112, P.332)

**SHEET 3 OF 3**  
CITY OF POQUOSON, VIRGINIA  
**THE SIRINE GROUP, LTD.**  
SURVEYORS • ENGINEERS • PLANNERS  
4794 GEORGE WASHINGTON MEMORIAL HIGHWAY  
U.S. ROUTE 17  
P.O. BOX 450  
WHITE MARSH, VIRGINIA 23183  
SCALE: 1" = 60' FEBRUARY 9, 2001  
0 30 60 120 180 240 FEET  
GRAPHIC SCALE

APPROVAL BLOCK  
APPROVED FOR THE CITY OF POQUOSON, VIRGINIA  
*Charles Burgess* 3/20/01  
CITY MANAGER, CHARLES BURGESS DATE

STATE OF VIRGINIA  
COUNTY OF YORK  
IN THE CLERK'S OFFICE OF THE CIRCUIT COURT FOR  
THE COUNTY OF YORK THE 20 DAY OF March,  
2001, THIS PLAT WAS PRESENTED AND ADMITTED TO  
RECORD AS THE LAW DIRECTS IN PLAT BOOK 13,  
PAGE 265.

TESTE: Lynn S. Jenkins  
CLERK  
BY: Runde Hughes D.C.

**LOT 1**  
NOW OR FORMERLY  
**RICHARD W. DAVENPORT, SR.  
& KATHERINE A. DAVENPORT**  
(D.B.476, P.238; P.B.10, P.7)  
TAX MAP PARCEL 29-B-3A

**LOT 2**  
NOW OR FORMERLY  
**JESUS LOPEZ**  
(D.B.596, P.449; P.B.10, P.7)  
TAX MAP PARCEL 29-B-3B

**LOT 3**  
NOW OR FORMERLY  
**TYRUS R. RYAN, III  
& DEBORAH L. RYAN**  
(D.B.420, P.839; P.B.10, P.7)  
TAX MAP PARCEL 29-B-3

**LOT 24**  
**HOLLOWAY FORREST**  
(D.B.341, P.468; P.B.7, P.119)