

CURVE TABLE

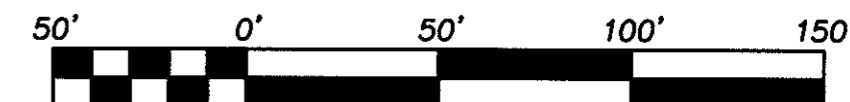
NUMBER	RADIUS	LENGTH	DELTA	TANGENT	CHORD BEARING	CHORD
1	133.54	91.20	39°07'50"	47.46	N 21°07'29" E	89.44
2	156.13	128.08	47°00'10"	67.89	S 68°03'29" E	124.52

SUBDIVISION
OF
CARVER GARDENS
SECTION SIX

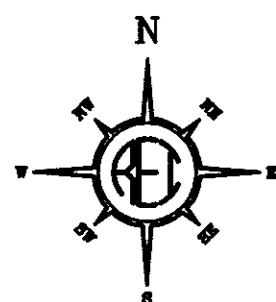
BRUTON MAGISTERIAL DISTRICT, YORK COUNTY, VIRGINIA

JULY 13, 2000

SHEET 2 OF 2



SCALE 1" = 50'

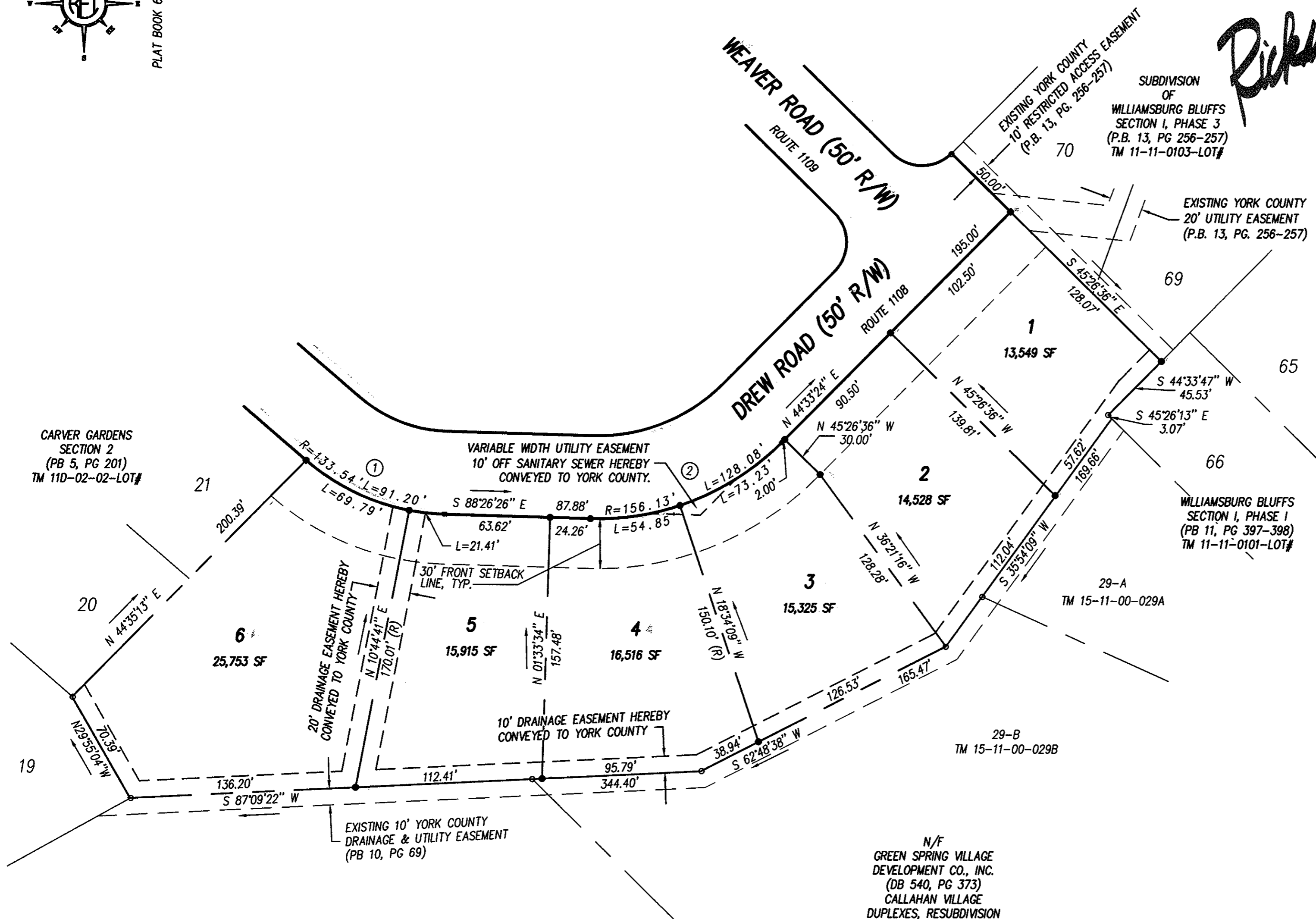


PLAT BOOK 6, PAGE 134

Rickmond Engineering, Inc.

Engineering Surveying Land Planning
1643 Merrimac Trail Vint Hill • P.O. Box 861647
Williamsburg, VA 23185 Warrenton, VA 20187
Voice: (757)229-1776 Voice: (540)349-7730
Fax: (757)229-4683 Fax: (540)349-7731
www.rickmond.com

Rickmond



CARVER GARDENS SECTION 2 (PB 5, PG 201) TM 11D-02-02-LOT#

SUBDIVISION OF WILLIAMSBURG BLUFFS SECTION I, PHASE 3 (P.B. 13, PG 256-257) TM 11-11-0103-LOT#

EXISTING YORK COUNTY 20' UTILITY EASEMENT (P.B. 13, PG. 256-257)

WILLIAMSBURG BLUFFS SECTION I, PHASE I (PB 11, PG 397-398) TM 11-11-0101-LOT#

N/F GREEN SPRING VILLAGE DEVELOPMENT CO., INC. (DB 540, PG 373) CALLAHAN VILLAGE DUPLEXES, RESUBDIVISION OF LOT 29 (PB 12, PG 453)

N/F US CORPORATION LOT 1 (PB 10, PG 69) TM 15-05-00-001



APPROVED: YORK COUNTY BOARD OF SUPERVISORS
BY: Al Maddalena DATE: 5/23/01
PLAT APPROVING AGENT

STATE OF VIRGINIA
COUNTY OF YORK
IN THE CLERK'S OFFICE OF THE CIRCUIT COURT FOR THE COUNTY OF YORK THIS 5th DAY OF June, 2001, THIS MAP WAS PRESENTED AND ADMITTED TO RECORD AS THE LAW DIRECTS IN PLAT BOOK 13 PAGE 303.

LYNN S. JENKINS, CLERK

TESTE: _____
CLERK
BY: Kristen N. Nelson, DC