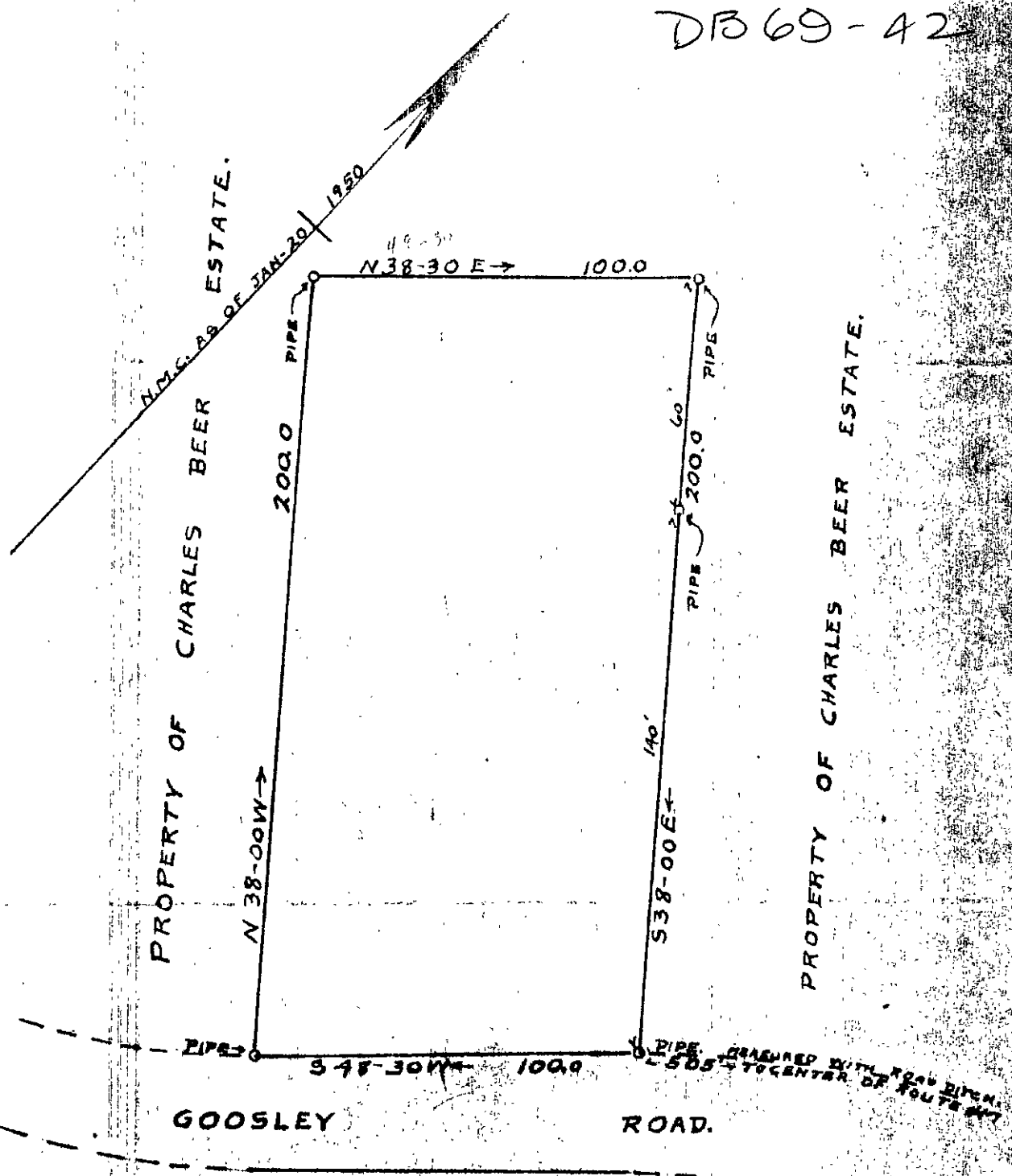


REC'D WITH
DB 69-42



PLAT, SHOWING A LOT OR PARCEL OF LAND SITUATE IN THE
 NELSON DISTRICT, OF YORK COUNTY VIRGINIA, BEING A PORTION
 OF THE ESTATE, OF CHARLES BEER, AS CONVEYED TO CHARLES
 RAYMOND BEER, BY HEIRS.

SCALE 1"=40'

JAN- 21 1950

J.M. Cochran
 SURVEYOR

18-50