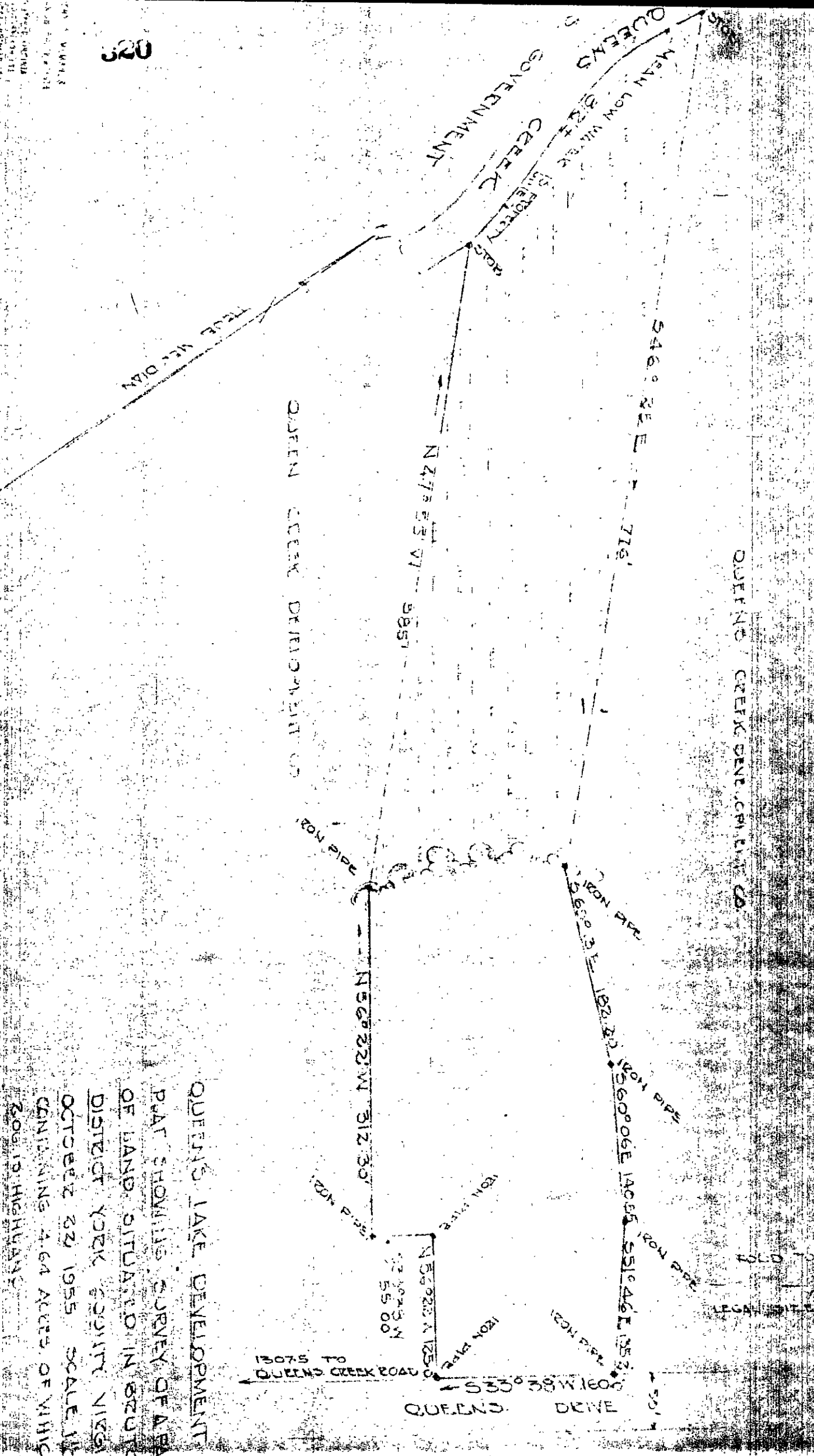


104-32C

320



QUEEN'S CREEK DRIVE, CORP. LIT. CO.

QUEEN'S LAKE DEVELOPMENT CO.

PAT. SHOWING SURVEY OF A PARCEL
 OF LAND SITUATED IN BEDFORD
 DISTRICT YORK COUNTY VIRGINIA
 OCTOBER 22 1955 SCALE 1/4" = 100'
 CONTAINING 4.64 ACRES OF WHICH
 2.06 IS HIGHWAY

10440