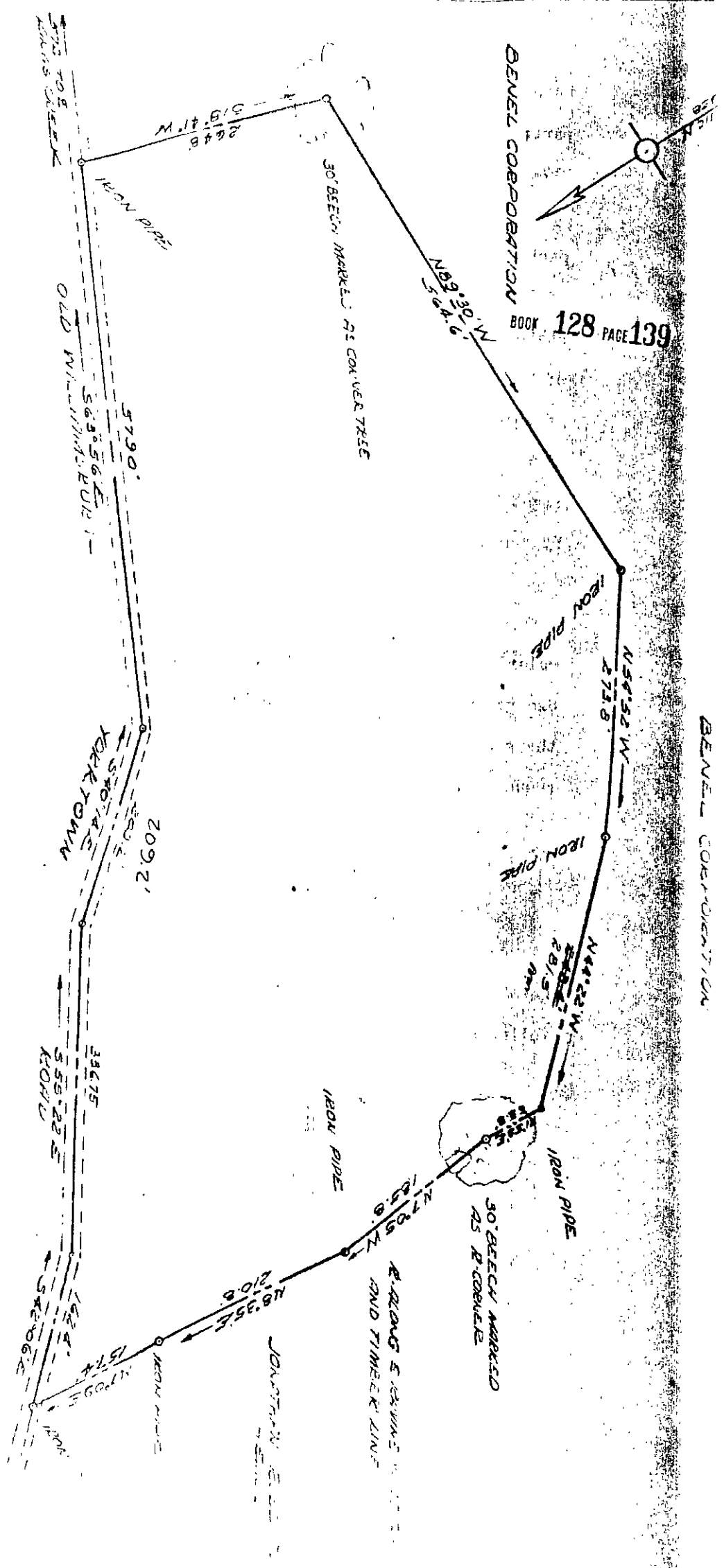
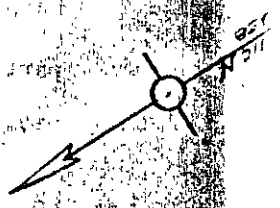


BENEL CORPORATION  
 BOOK 128 PAGE 139



BENEL CORPORATION

PAGE 2

PLAT SHOWING SURVEY OF PART  
 OF TWO PARCELS OF LAND TO BE CONVEYED  
 TO EDGAR K. VIELE & COMPANY  
 BY VIRGINIA TRUST COMPANY & ASSOCIATES  
 CO-EXECUTORS UNDER THE WILL OF  
 VIRGINIA B. HOUGHWOOD, DECEASED

BRUNN DISTRICT  
 YORK COUNTY  
 VIRGINIA

SCALE 1" = 100'

OCTOBER 25, 1955

11-90A  
 ?