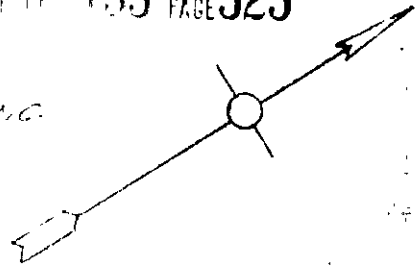
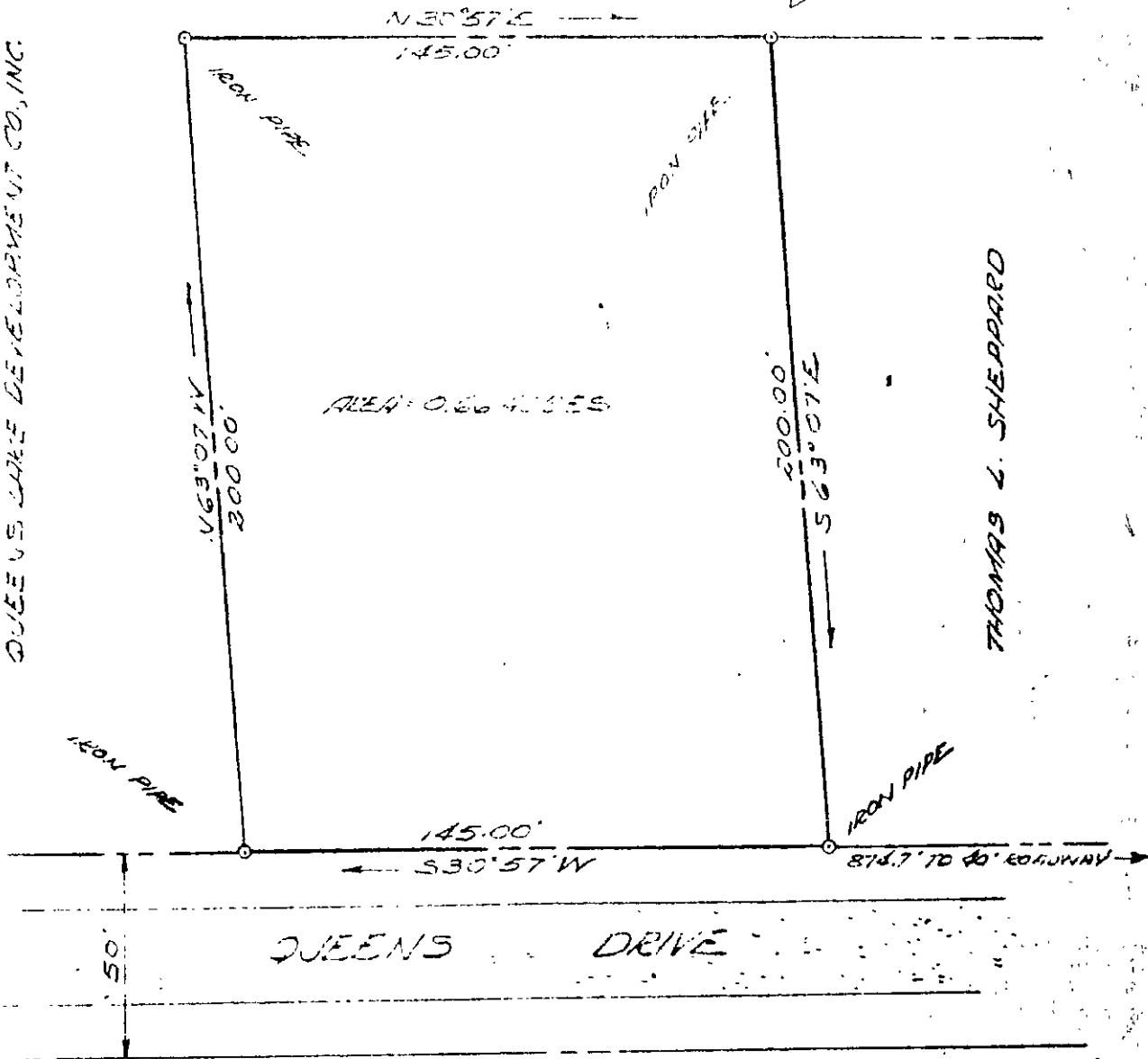


QUEENS LAKE DEVELOPMENT CO., INC.



QUEENS LAKE DEVELOPMENT CO., INC.



PLAT SHOWING SURVEY
 OF A PARCEL OF LAND TO BE
 CONVEYED FROM
 QUEENS LAKE DEVELOPMENT CO., INC. TO
 JOHN SMITH &
 ELSIE M. SMITH
 BRUTON DISTRICT
 YORK COUNTY
 VIRGINIA

M. MANUS PROCK & M. MANUS
 CIVIL ENGINEERS & LAND SURVEYORS
 WILLIAMSBURG, VIRGINIA

MAY 28, 1959
 NB61P22

7A2 (9) 30