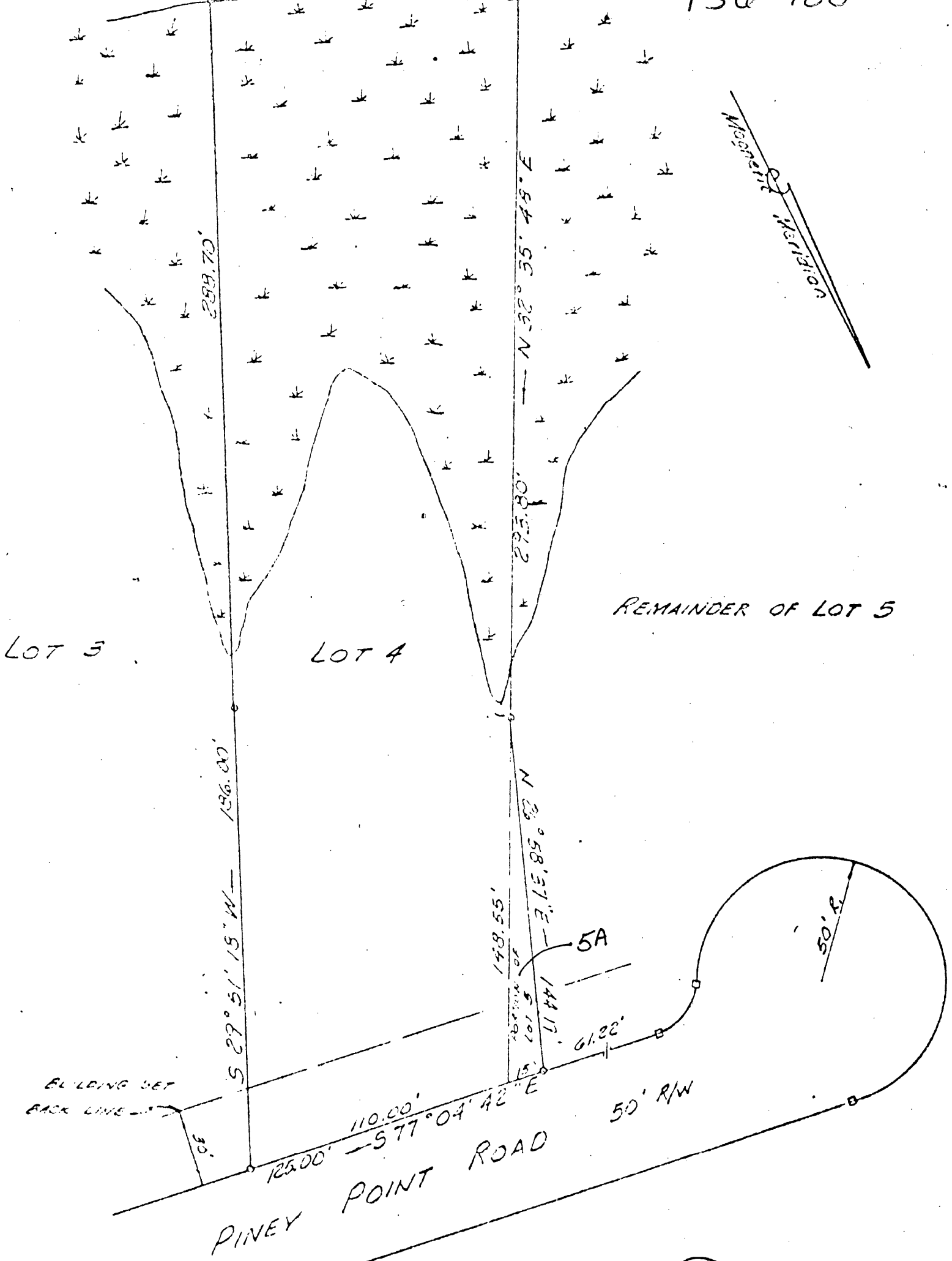


PINEY POINT CREEK

150-488



30 P (4) 4 + 5A

PLAT OF THE PROPERTY OF
 J.T. DE ALBA AND S.E. WADDILL, JR.
 LOT 4 & A PORTION OF LOT 5
 PINEY POINT ESTATES
 SECTION THREE
 YORK COUNTY, VIRGINIA
 COENEN & ASSOCIATES, ENGINEERS
 NEWPORT NEWS, VIRGINIA
 SCALE 1" = 50' AUG. 24, 1961

COMMONWEALTH OF VIRGINIA
 REGISTERED PROFESSIONAL ENGINEER
 JON D. COENEN
 CIVIL ENGINEER
 CERTIFICATE No. 2120
 Jon D. Coenen