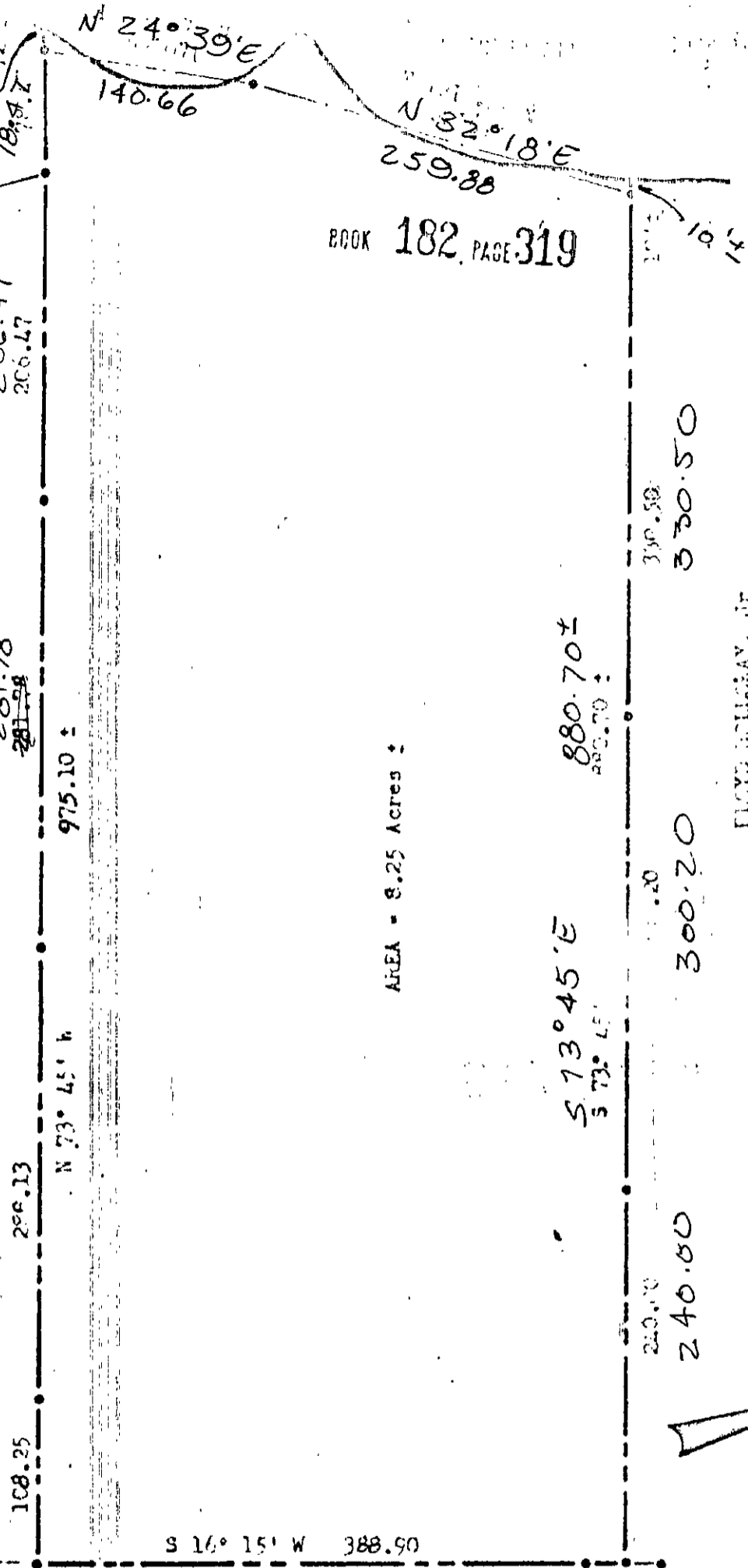


064.86' to 17 R/W

LOT #5, Wm. J. Nottingham Estate Subdivision
NANNIE BRUCE'S



BOOK 182 PAGE 319

AREA = 8.25 Acres ±

FLOYD HULLCAY, JR.

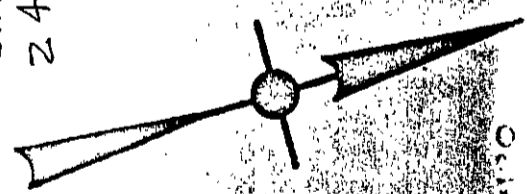
PLAT of:
A part of:

W. H. WHITE, SR. ESTATE

SCALE: 1" = 100'

SEP 1964

NOTE: Iron pipes at all corners.
Bearings are clockwise.



S 16° 15' W 388.90

BLACK
BLK
WH WHITE SR.
SUB.

STEPHEN STEPHENS