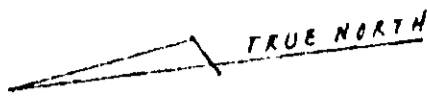
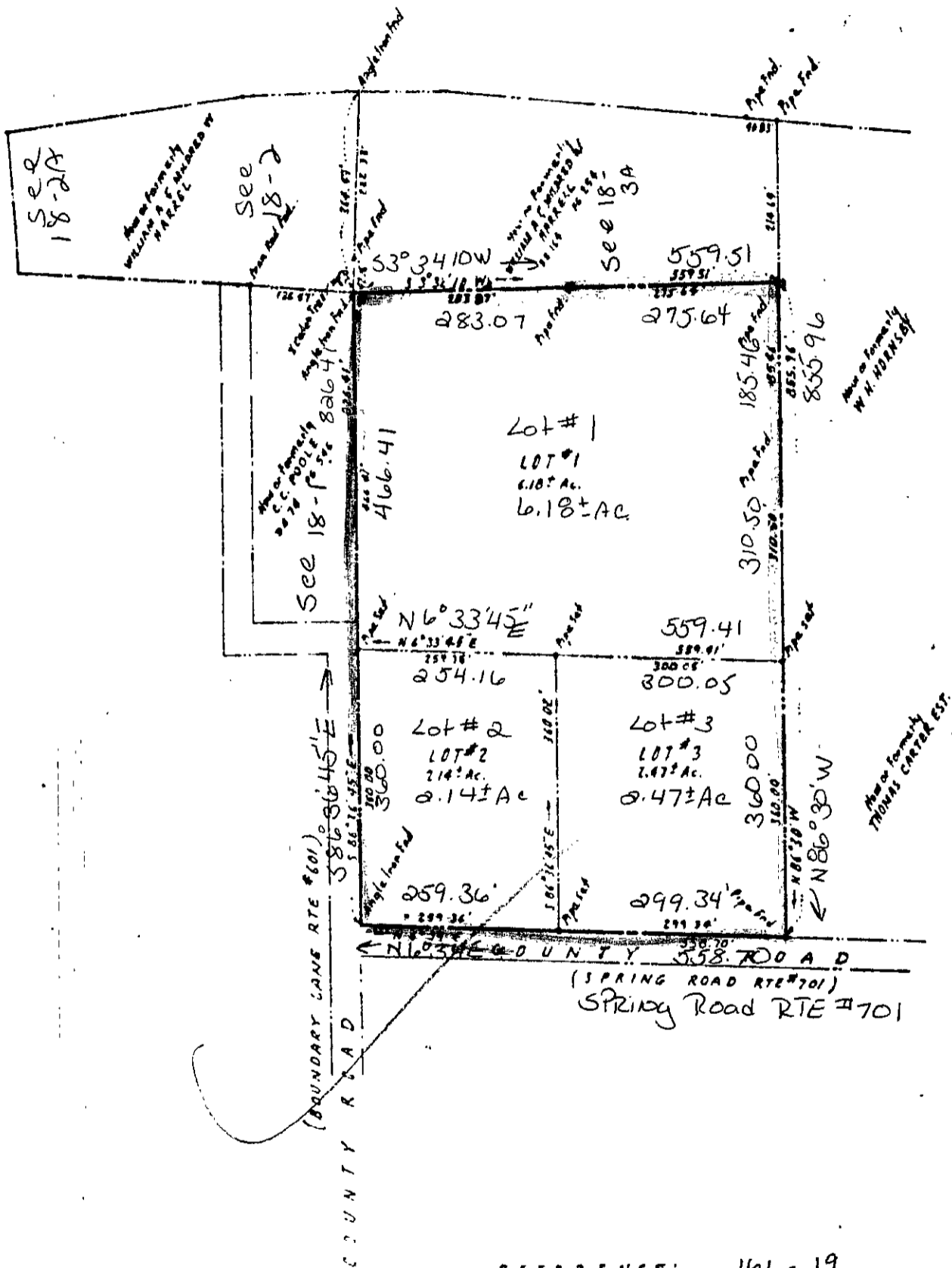


D.B - 201-232



Now or Formerly
UNITED STATES GOVERNMENT "EAGLE TRACT"



Plat of Property of
Darrrell F. Harris, Fleming Harris
Paul E. Hunt and Charles M. Turner

Scale 1" = 200'
Date Dec. 21, 1966

Murray P. Dischinger
Murray P. Dischinger
Surveyor

REFERENCE: 161 - 19
DEED AND PLAT IN DEED BOOK 181 PAGE 19

**PLAT OF PROPERTY OF
DARRRELL F. HARRIS, FLEMING HARRIS,
PAUL E. HUNT - CHARLES M. TURNER**
NEIGHBOR DISTRICTS YORK COUNTY, VIRGINIA

Murray P. Dischinger — Engineers
Highway News B. Hampton, Virginia

Date: 12/21/66	REVISIONS
Job No. 11-2-3	

Tax Map 18B (2) Lots 1, 2 & 3