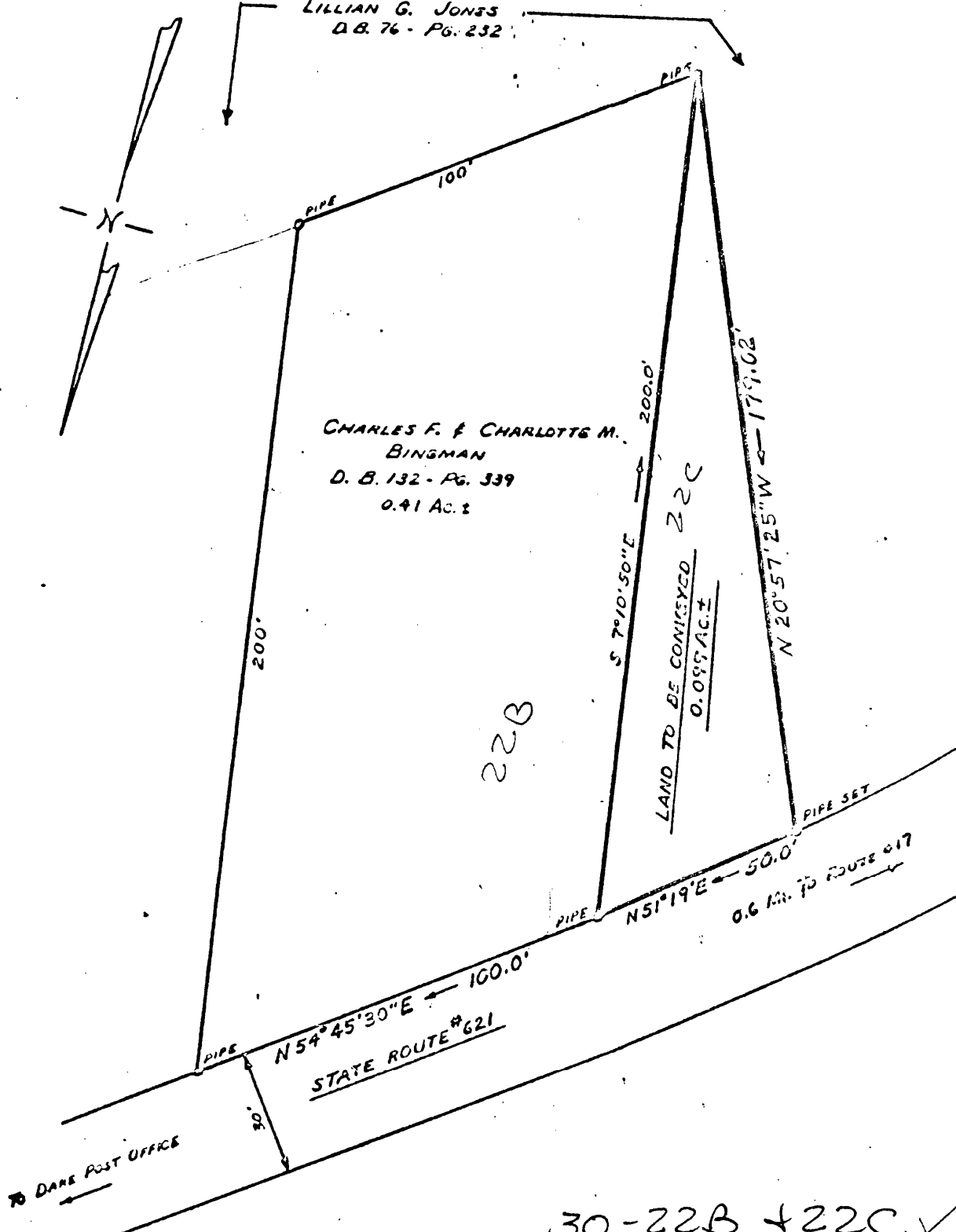


PROPERTY OF
LILLIAN G. JONES
D.B. 76 - Pg. 232

CHARLES F. & CHARLOTTE M.
BINGMAN
D. B. 132 - Pg. 339
0.41 Ac. ±



30-22B + 22C ✓

PLAT OF PROPERTY OF LILLIAN G. JONES TO BE CONVEYED TO CHARLES F. & CHARLOTTE M. BINGMAN	
LANDS LOCATED ON STATE ROUTE #621 CRAPTON DISTRICT, YORK COUNTY, VIRGINIA SCALE: 1"=200'	
S. J. GLASS & CO. SURVEYORS ENGINEERS & ARCHITECTS 100 N. 10th St., York, Pa.	
FIELD WORK BY: S. J. GLASS	PLANS BY: S. J. GLASS
FIELD WORK BY: S. J. GLASS	PLANS BY: S. J. GLASS

