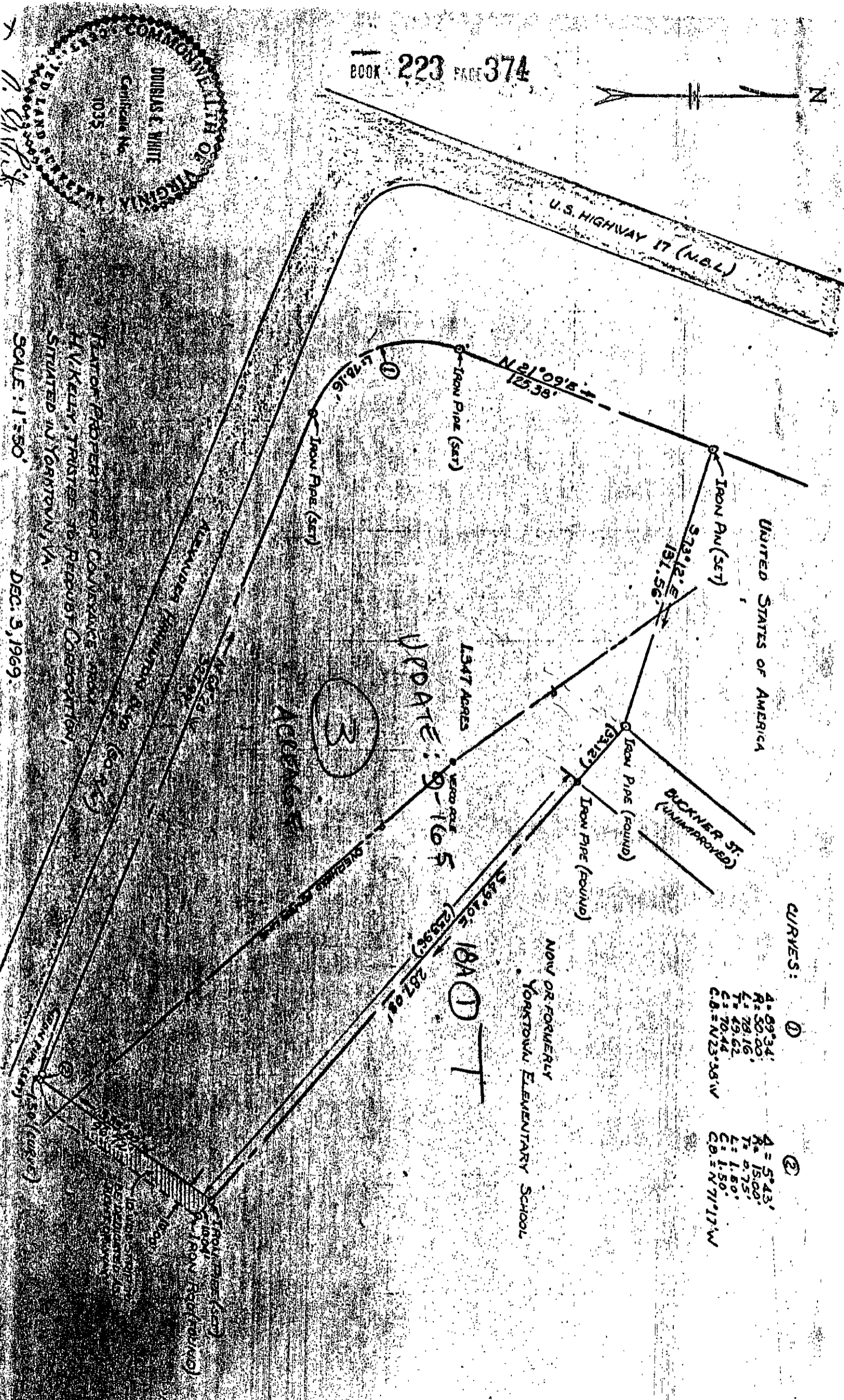




COMMONWEALTH OF VIRGINIA  
 DOUGLAS E. WHITE  
 Certificate No. 10335  
 REGISTERED LAND SURVEYOR

PLAT OF PROPERTY FOR CONFORMANCE WITH  
 HICKELLY TRUSTEE TO PEOPLES CORPORATION,  
 SITUATED IN YORKTOWN, VA.  
 SCALE: 1"=50'  
 DEC. 9, 1969.



CURVES:

①	A = 89° 34'	A = 5° 43'
	R = 50.00'	R = 15.00'
	L = 78.16'	T = 9.75'
	C = 49.62'	L = 1.50'
	C.B. = 70.44'	C.D. = 1.50'
		C.D. = N 71° 17' W

UPDATE: 9-16-85  
 1347 AREAS  
 184① T

184① T (W.R)