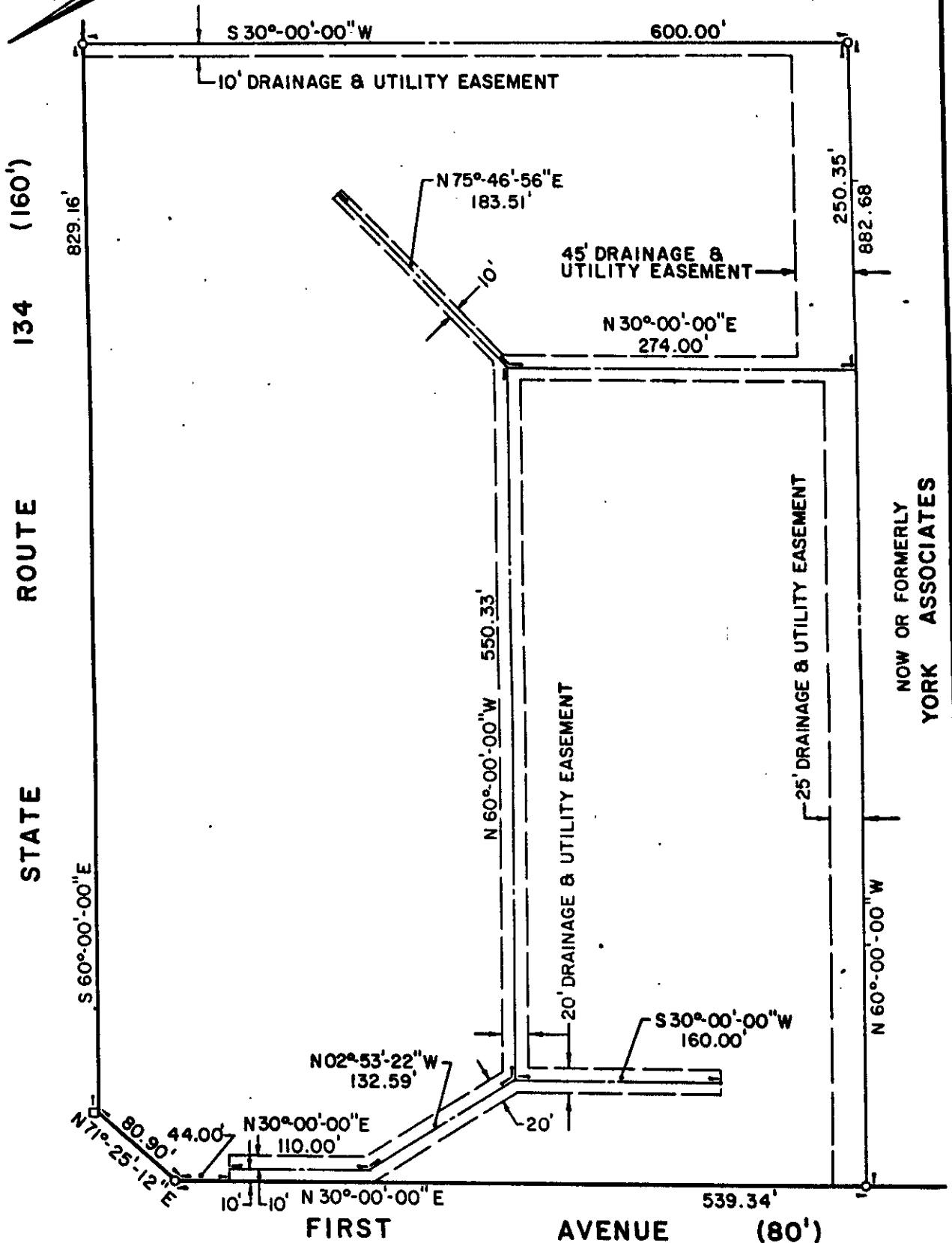


NOW OR FORMERLY
YORK ASSOCIATES

(D. B. 464, P. 714)



NOW OR FORMERLY
YORK ASSOCIATES

PLAT OF DRAINAGE & UTILITY EASEMENTS HEREBY
CONVEYED TO THE COUNTY OF YORK, VIRGINIA
BY

CORNERSTONE DEVELOPMENT COMPANY

BETHEL DISTRICT
SCALE: 1" = 100'

COUNTY OF YORK, VIRGINIA
NOVEMBER 6, 1987



THE SIRINE GROUP, LTD.
SURVEYORS • ENGINEERS • PLANNERS
P.O. BOX 450, RTE. 17
WHITE MARSH, VIRGINIA 23183