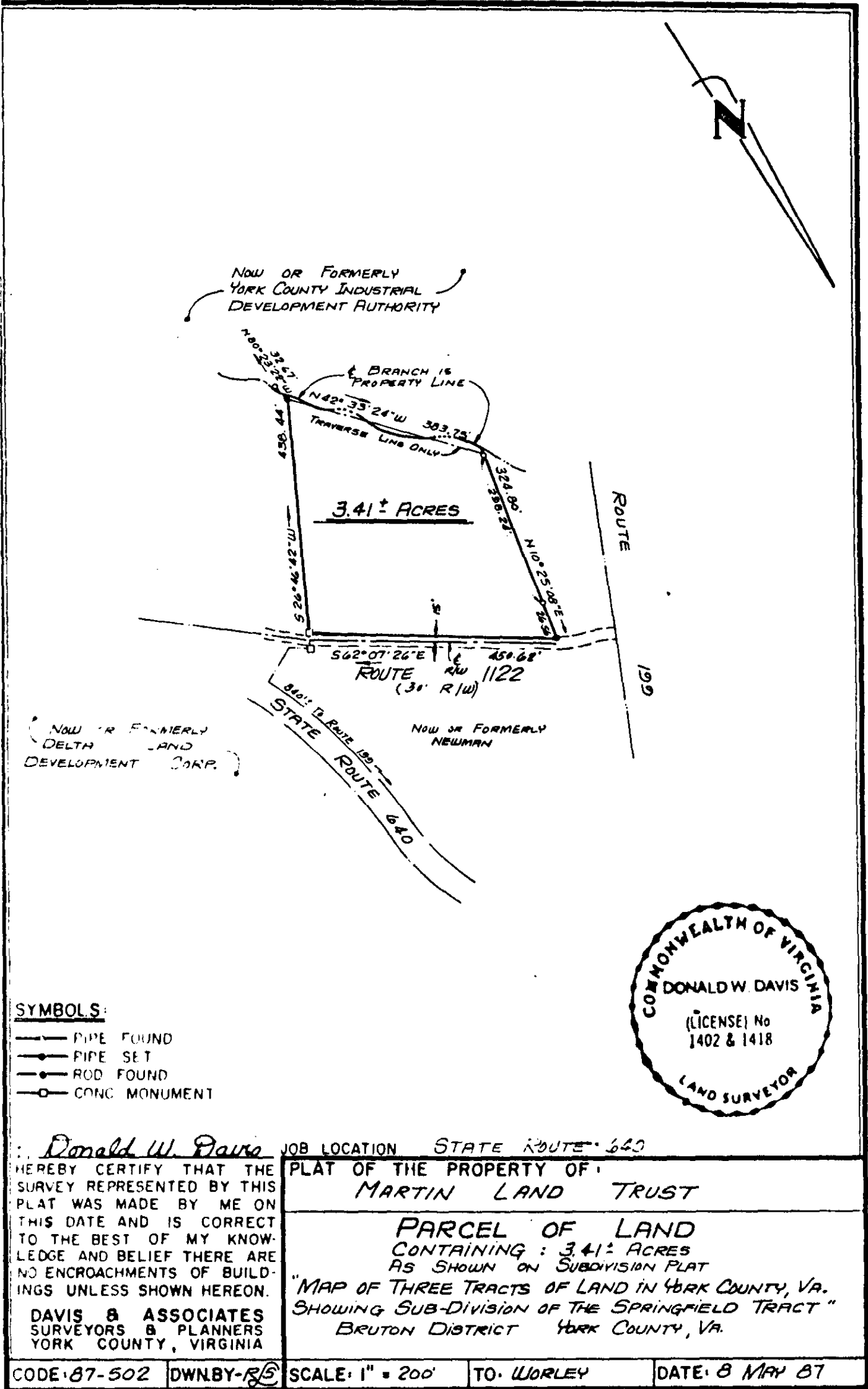


P 47133A



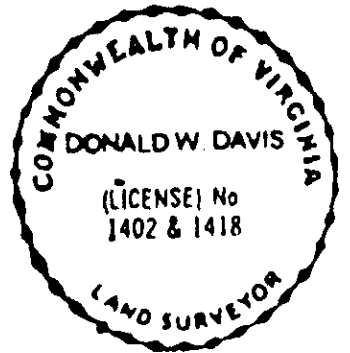
NOW OR FORMERLY YORK COUNTY INDUSTRIAL DEVELOPMENT AUTHORITY

NOW OR FORMERLY DELTA LAND DEVELOPMENT CORP.

NOW OR FORMERLY NEUMAN

SYMBOLS:

- PIPE FOUND
- PIPE SET
- ROD FOUND
- CONC MONUMENT



Donald W. Davis JOB LOCATION STATE ROUTE 640

HEREBY CERTIFY THAT THE SURVEY REPRESENTED BY THIS PLAT WAS MADE BY ME ON THIS DATE AND IS CORRECT TO THE BEST OF MY KNOWLEDGE AND BELIEF THERE ARE NO ENCROACHMENTS OF BUILDINGS UNLESS SHOWN HEREON.

DAVIS & ASSOCIATES
SURVEYORS & PLANNERS
YORK COUNTY, VIRGINIA

PLAT OF THE PROPERTY OF
MARTIN LAND TRUST

PARCEL OF LAND
CONTAINING : 3.41± ACRES
AS SHOWN ON SUBDIVISION PLAT
"MAP OF THREE TRACTS OF LAND IN YORK COUNTY, VA.
SHOWING SUB-DIVISION OF THE SPRINGFIELD TRACT"
BRUTON DISTRICT YORK COUNTY, VA.

CODE 87-502

DWNBY-R/S

SCALE: 1" = 200'

TO: WORLEY

DATE: 8 MAY 87

REVISED TO SHOW
ROUTE 1122 AS OF JULY 87
D.W.D.