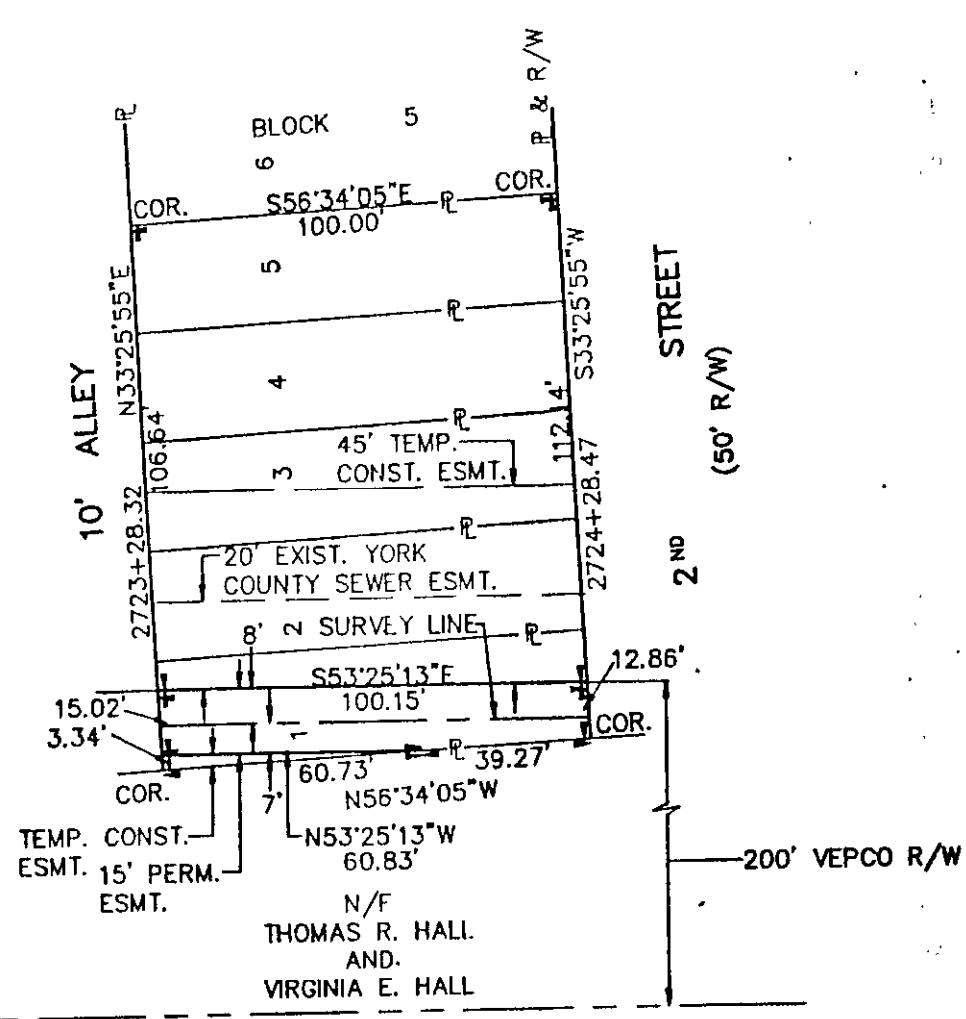
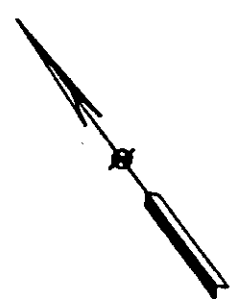


292


HARRY S. GAY, JR.  
ESTATE



AREA INSIDE VEPCO R/W:  
 PERM: 0.03 AC.  
 TEMP: 0.002 AC. (101 SQ.FT.)

AREA OUTSIDE VEPCO R/W:  
 TEMP: 0.10 AC.

MERIDIAN SOURCE: VIRGINIA COORDINATE SYSTEM  
 OF 1927 (SOUTH ZONE)

 <b>Virginia Natural Gas</b> VNG LATERAL		
PLAT TO ACCOMPANY RIGHT-OF-WAY AGREEMENT WITH <b>HARRY S. GAY, JR.</b> <b>ESTATE</b>		
DISTRICT/TOWNSHIP BRUTON	COUNTY YORK	STATE VA
SURVEYED BY SCHNEIDER ENGINEERS		
SCALE 1"=40'	DATE 2/28/90	NO. 292

4	3	2	1	1/31/91 REVISED ESMT. & R RSA
---	---	---	---	--

11 A (1) 5 1+2