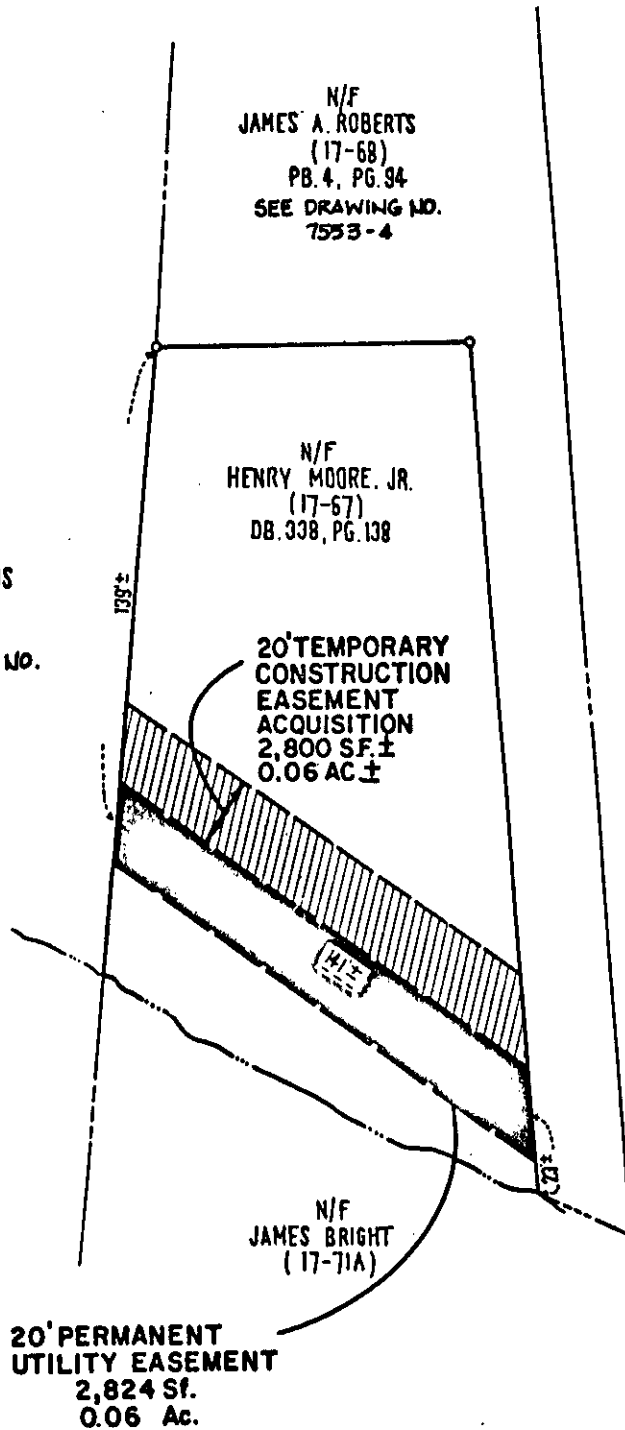


N/F
JAMES A. ROBERTS
(17-68)
PB. 4, PG. 94
SEE DRAWING NO.
7553-4

N/F
HENRY MOORE, JR.
(17-67)
DB. 308, PG. 138

N/F
SAMUEL R. EDWARDS
(17-66)
DB. 38, PG. 554
SEE DRAWING NO.
7553-6

N/F
JAMES A. ALLEN
(17-9-1)
PB. 10, PG. 171



20' TEMPORARY
CONSTRUCTION
EASEMENT
ACQUISITION
2,800 SF ±
0.06 AC ±

20' PERMANENT
UTILITY EASEMENT
2,824 Sf.
0.06 Ac.

NOTE: PROPERTY LINES SHOWN ARE TAKEN FROM
RECORD AND OTHER AVAILABLE INFORMATION
AND DO NOT REPRESENT AN ACTUAL FIELD SURVEY.

SEE SHEET # 5 OF LACKEY WASTEWATER
SYSTEM - PHASE I FOR PLAN AND PROFILES.



Consulting Engineers

Engineers, Surveyors, Planners

Williamsburg, Virginia

**PLAT SHOWING 20 FT. EASEMENT
THROUGH THE LANDS OF HENRY MOORE, JR.
TO: THE COUNTY OF YORK**