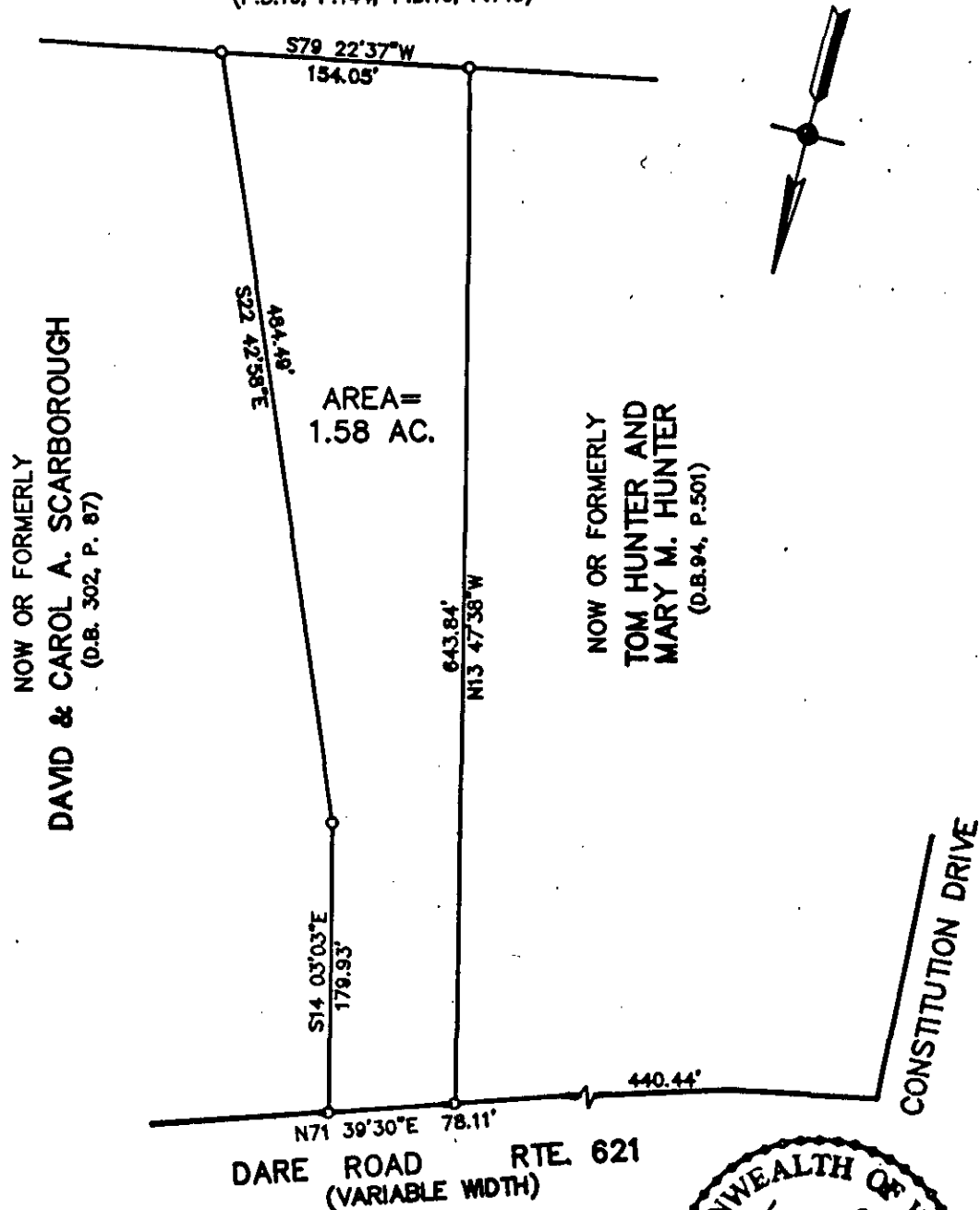
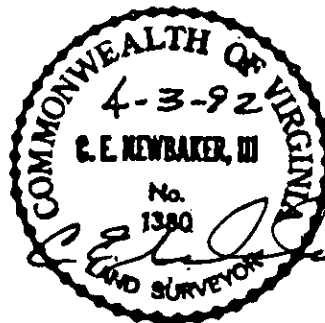


PARCEL Y  
NOW OR FORMERLY  
B.D. ASHE AND ROBERT F. RIPLEY, JR.  
A VIRGINIA GENERAL PARTNERSHIP 1985 I  
(P.B.10, P.144; P.B.10, P.143)



PLAT  
OF  
PROPERTY OF  
MARY E. TYLER (D.B.74, P.351)  
TO BE CONVEYED TO  
1991 ASHE PARTNERSHIP,  
A VIRGINIA GENERAL PARTNERSHIP  
GRAFTON DISTRICT COUNTY OF YORK, VIRGINIA  
SCALE: 1"=100' APRIL 3, 1992



THE SIRINE GROUP, LTD.  
SURVEYORS • ENGINEERS • PLANNERS  
WHITE MARSH, VIRGINIA