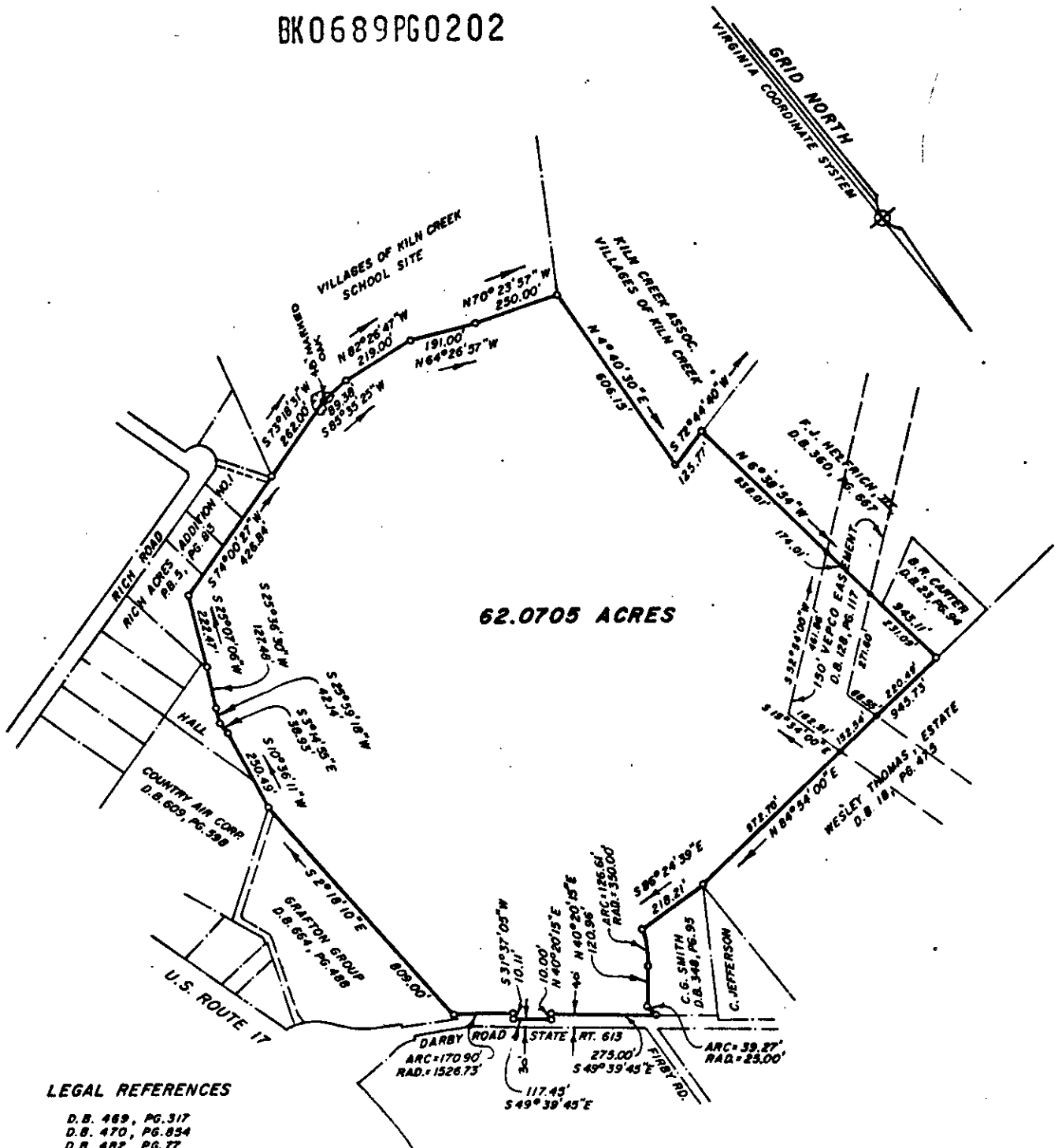


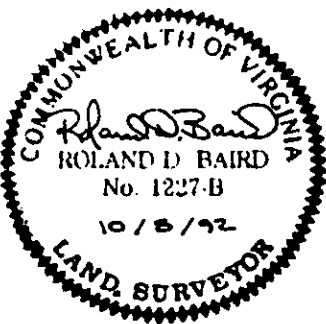
BK0689PG0202



LEGAL REFERENCES

- D.B. 469, PG. 317
- D.B. 470, PG. 854
- D.B. 482, PG. 77
- D.B. 482, PG. 75
- D.B. 483, PG. 776
- D.B. 488, PG. 843
- D.B. 489, PG. 7
- D.B. 490, PG. 5
- D.B. 528, PG. 776
- D.B. 528, PG. 779
- D.B. 528, PG. 782
- D.B. 529, PG. 502
- D.B. 639, PG. 104

THIS IS TO CERTIFY THAT THIS MAP OR PLAT, AND THE SURVEY ON WHICH IT IS BASED, WERE MADE IN ACCORDANCE WITH "MINIMUM STANDARD DETAIL REQUIREMENTS FOR TITLE SURVEYS," JOINTLY ESTABLISHED AND ADOPTED BY ALTA & ACSM IN 1962, AND EDITED AND REAFFIRMED BY ACSM IN 1979.



<p>PLAT SHOWING PROPERTY OF GRAFTON GROUP CONTAINING 62.0705 ACRES</p>	
<p>YORK COUNTY, VIRGINIA</p>	
<p>JOHNSON - BAIRD AND ASSOCIATES CIVIL ENGINEER AND LAND SURVEYORS 1538 WEST QUEEN STREET - HAMPTON, VIRGINIA 23669</p>	
SCALE: 1" = 400'	DATE: OCT. 8, 1992
FILE NO 87-54	