

LINE TABLE

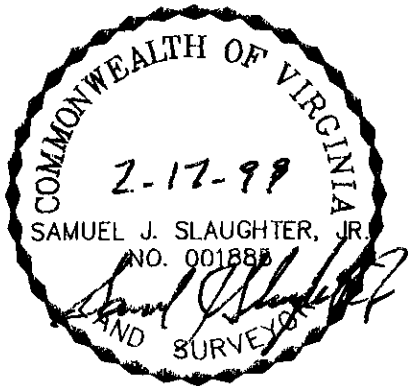
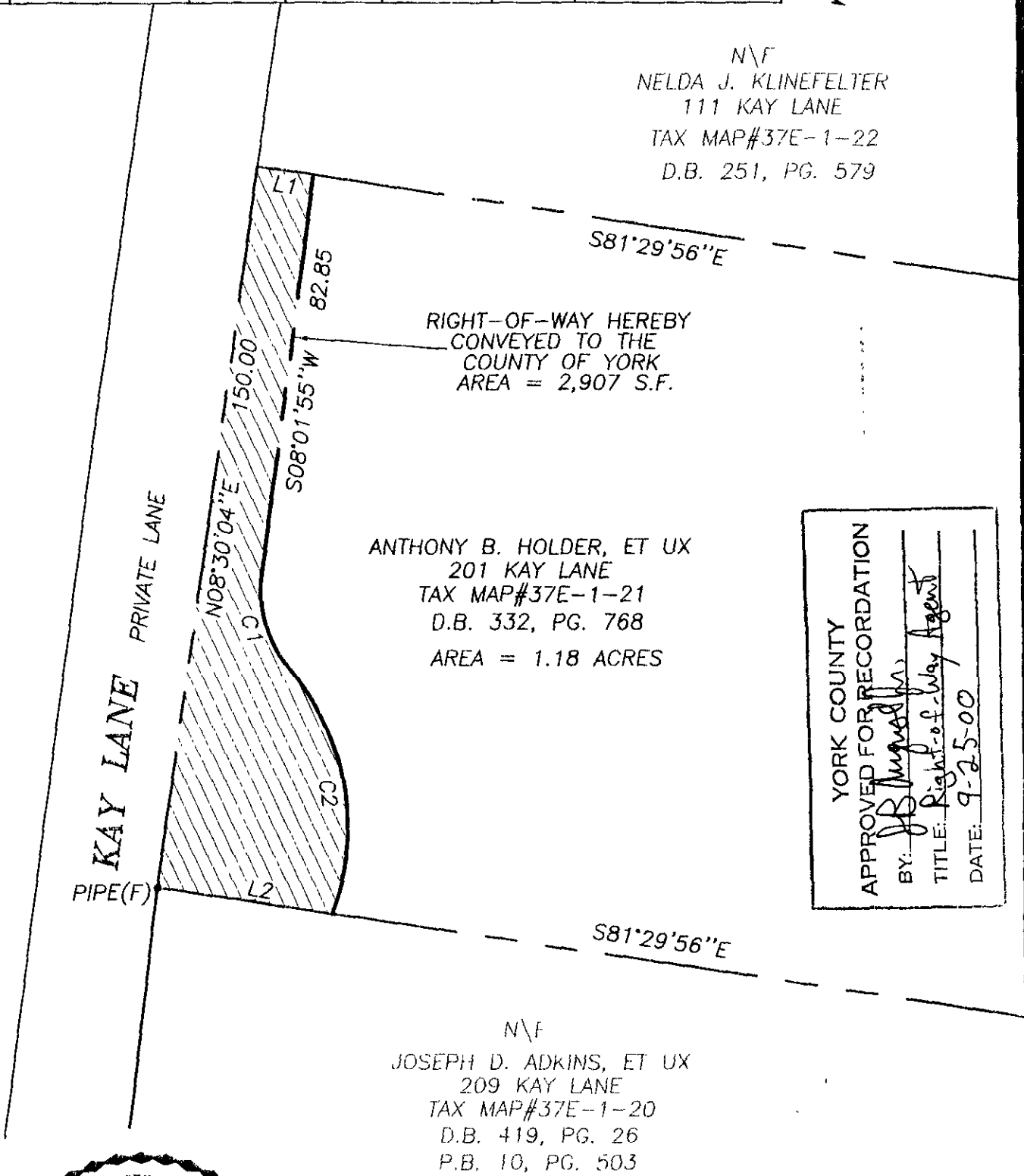
PG0312 OCT-5 00

NUMBER	DIRECTION	DISTANCE
L1	N81°29'56"W	11.67
L2	N81°29'56"W	36.46

V.A. STATE PLANE
COORDINATE SYSTEM
SOUTH ZONE

CURVE TABLE

NUMBER	DELTA	RADIUS	LENGTH	TANGENT	CHORD	CH. BEARING
C1	48°05'33"	25.00	20.98	11.15	20.37	N16°00'52"W
C2	61°25'29"	50.00	53.60	29.70	51.07	S09°20'53"E



THIS PLAT IS INTENDED FOR A DESCRIPTION OF RIGHT-OF-WAY ONLY AND DOES NOT CONSTITUTE A BOUNDARY SURVEY. THIS IS NOT A SUBDIVISION PLAT.

PLAT OF RIGHT-OF-WAY
TO BE CONVEYED TO
COUNTY OF YORK
FROM
ANTHONY B. HOLDER, ET UX
ASSESSOR'S PARCEL No. 37E-1-21
LOCATED IN BETHEL MAGISTERIAL DISTRICT
COUNTY OF YORK, VIRGINIA

SLEDD & ASSOCIATES, P.C.
ENGINEERS PLANNERS SURVEYORS
11832 ROCK LANDING DRIVE, SUITE 203
NEWPORT NEWS, VIRGINIA 23606
(757) 873-3386

SHEET NO
1
OF **1**
DATE
1/26/99

DRAWN BY: FIELD BOOK PROJECT NO. SCALE
CADD 98-012A 1" = 30'