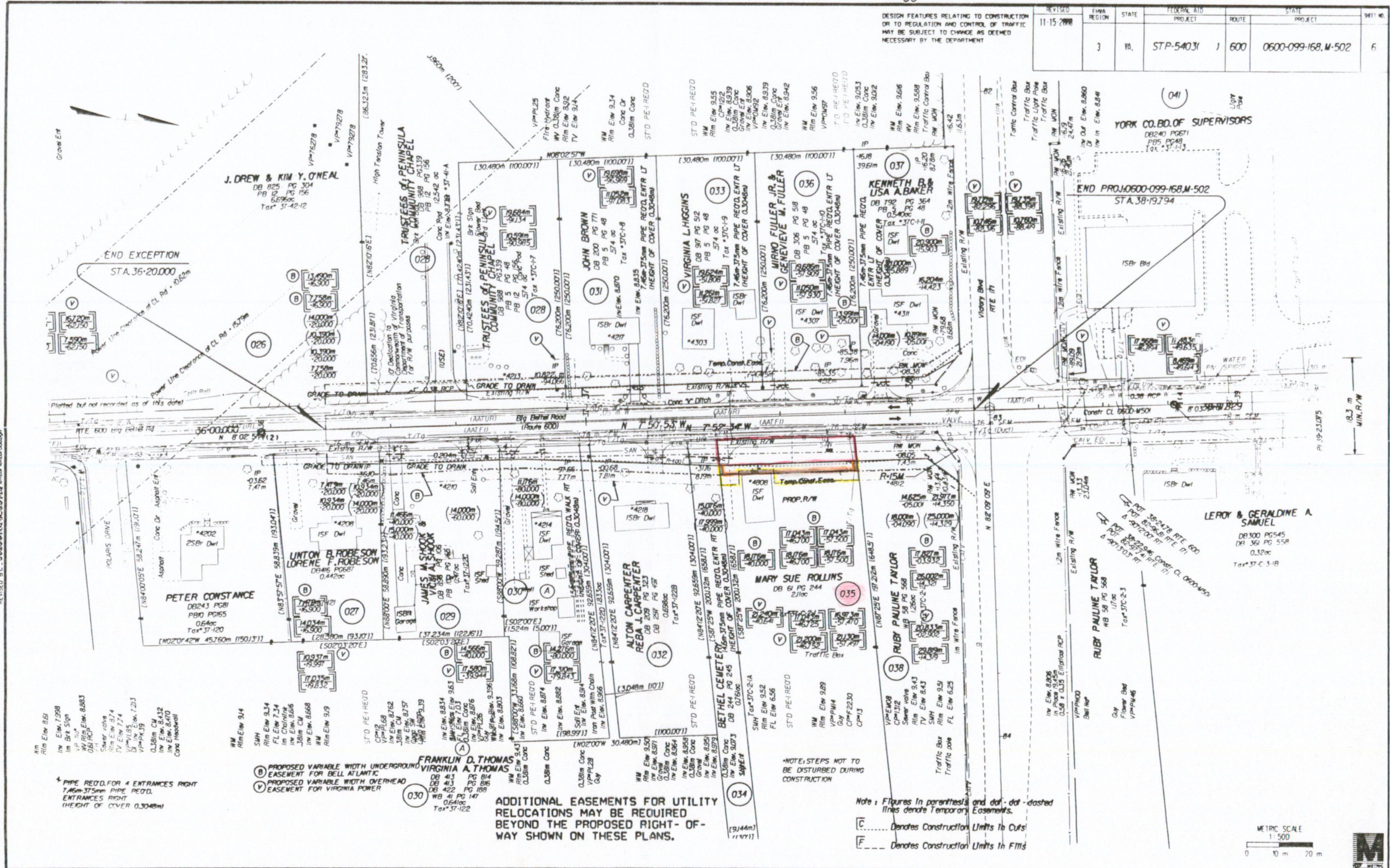


SUFFOLK DISTRICT DESIGN UNIT

SURVEYED BY: A.S. BAUTTS, 600 (797) 925-1559  
 SUPERVISED BY: O.R. BEATON, (797) 925-3620  
 CAD OPERATOR: O.R. BEATON  
 REVISED BY: O.R. BEATON, (797) 925-3620

2/26/02 020437



DESIGN FEATURES RELATING TO CONSTRUCTION OR TO REGULATION AND CONTROL OF TRAFFIC MAY BE SUBJECT TO CHANGE AS DEEMED NECESSARY BY THE DEPARTMENT

REVISED	FYMA REGION	STATE	FEDERAL AID PROJECT	ROUTE	STATE PROJECT	SHEET NO.
11-15-2000	3	VA.	STP-54031	600	0600-099-168.M-502	6

YORK CO. BD. OF SUPERVISORS  
 DB240 PG871  
 PG5, PG48  
 PG1, PG13

END PROJ. 0600-099-168.M-502  
 STA. 38+19.794

LEROY & GERALDINE A. SAMUEL  
 DB 300 PG 545  
 DB 361 PG 558  
 0.32ac  
 Tax\* ST-C-3-B

RUBY PAULINE TAYLOR  
 WB 58 PG 568  
 1/10c  
 Tax\* ST-C-3-B

ADDITIONAL EASEMENTS FOR UTILITY RELOCATIONS MAY BE REQUIRED BEYOND THE PROPOSED RIGHT-OF-WAY SHOWN ON THESE PLANS.

Note: Figures in parenthesis and dot-dot-dashed lines denote Temporary Easements.  
 [C] Denotes Construction Units In Cuts  
 [F] Denotes Construction Units In Fills

