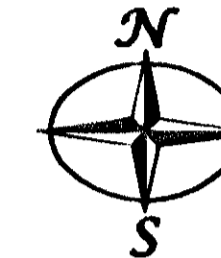


RE-SUBDIVISION OF THE PROPERTY
OF
WILLIAM V. NUNN, JR.

GRAFTON DISTRICT - YORK COUNTY, VIRGINIA

AUGUST 16, 2002

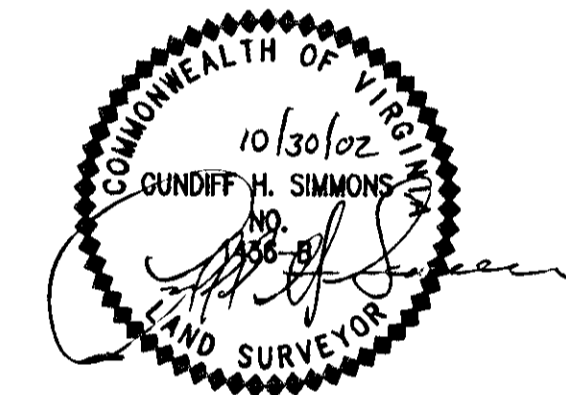
CURVE	LENGTH	RADIUS	CURVE TABLE		CHORD	CHORD BEARING
			DELTA	TANGENT		
C4	85.78'	200.00'	24°34'28"	43.56'	85.12'	N48°40'33"E
C5	78.54'	50.00'	90°00'00"	50.00'	70.71'	S76°02'14"E



Simmons Newsome, P.C.
Surveyors Planners
110A Dare Road
Yorktown, Virginia 23692
Phone (757) 898-4914 Fax (757) 898-4914



1" = 100'
SHEET 2 OF 2



MONUMENT LEGEND

- AXF=AXLE FOUND
- CMF=CONCRETE MONUMENT FOUND
- CMFV=VDOT CONCRETE MONUMENT FOUND
- DHF=DRILL HOLE FOUND
- INF=IRON NAIL FOUND
- IPF=IRON PIPE FOUND
- IRF=IRON ROD FOUND
- LPF=LEAD PLUG FOUND
- XCF=CHISELED "X" FOUND
- CMS=CONCRETE MONUMENT SET
- DHS=DRILL HOLE SET
- INS=IRON NAIL SET
- IPS=IRON PIPE SET
- IRS=IRON ROD SET
- LPS=LEAD PLUG SET
- XCS=CHISELED "X" SET

APPROVED:

YORK COUNTY BOARD OF SUPERVISORS

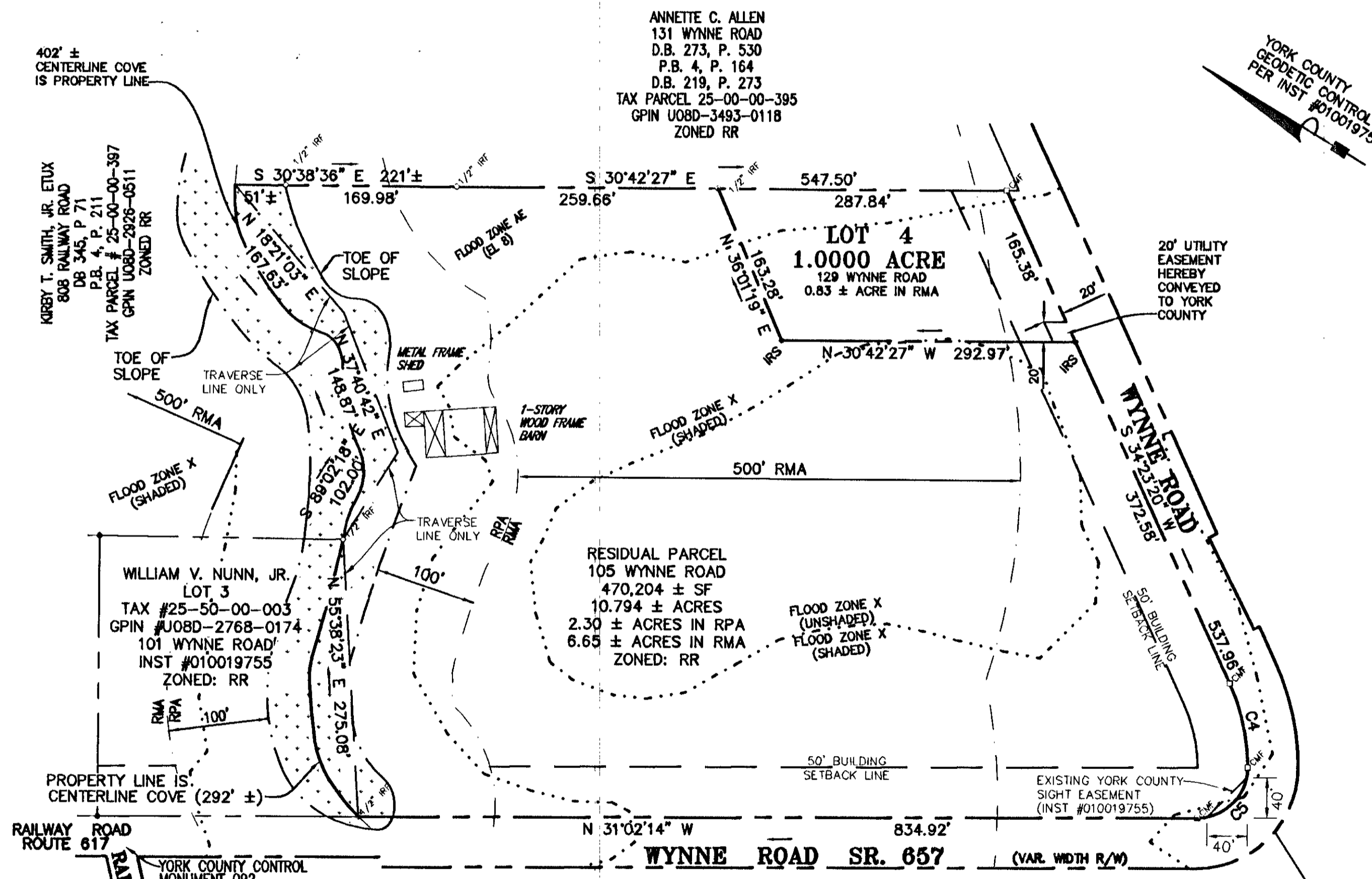
BY: Al Maddalena
Plat Approving Agent

DATE: 1/9/03

STATE OF VIRGINIA
COUNTY OF YORK

In the Clerk's Office of the Circuit Court for the
County of York the 22nd day of January 2003 this
map was presented and admitted to record as 3:01 pm
the law directs in Instrument # 030001830

TESTE: Lynns Jenkins
Clerk
BY: Lisa Brogden, P.C.



NOTE:
FLOOD ZONE BOUNDARIES AS SCALED FROM INST. 010019755