

BOUNDARY LINE ADJUSTMENT  
AND RIGHT-OF-WAY DEDICATION  
PROPERTY OF

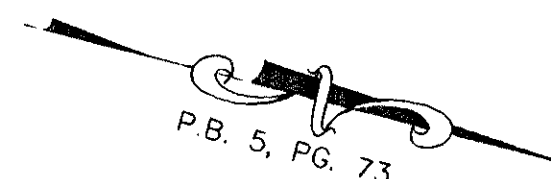
**WAL\*MART REAL ESTATE  
BUSINESS TRUST**  
A DELAWARE BUSINESS TRUST

BETHEL MAGISTERIAL DISTRICT  
COUNTY OF YORK, VIRGINIA

DATE: 02/23/01      SHEET 3 OF 6      SCALE: 1"=50'

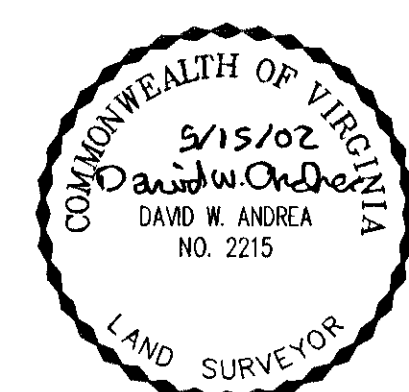
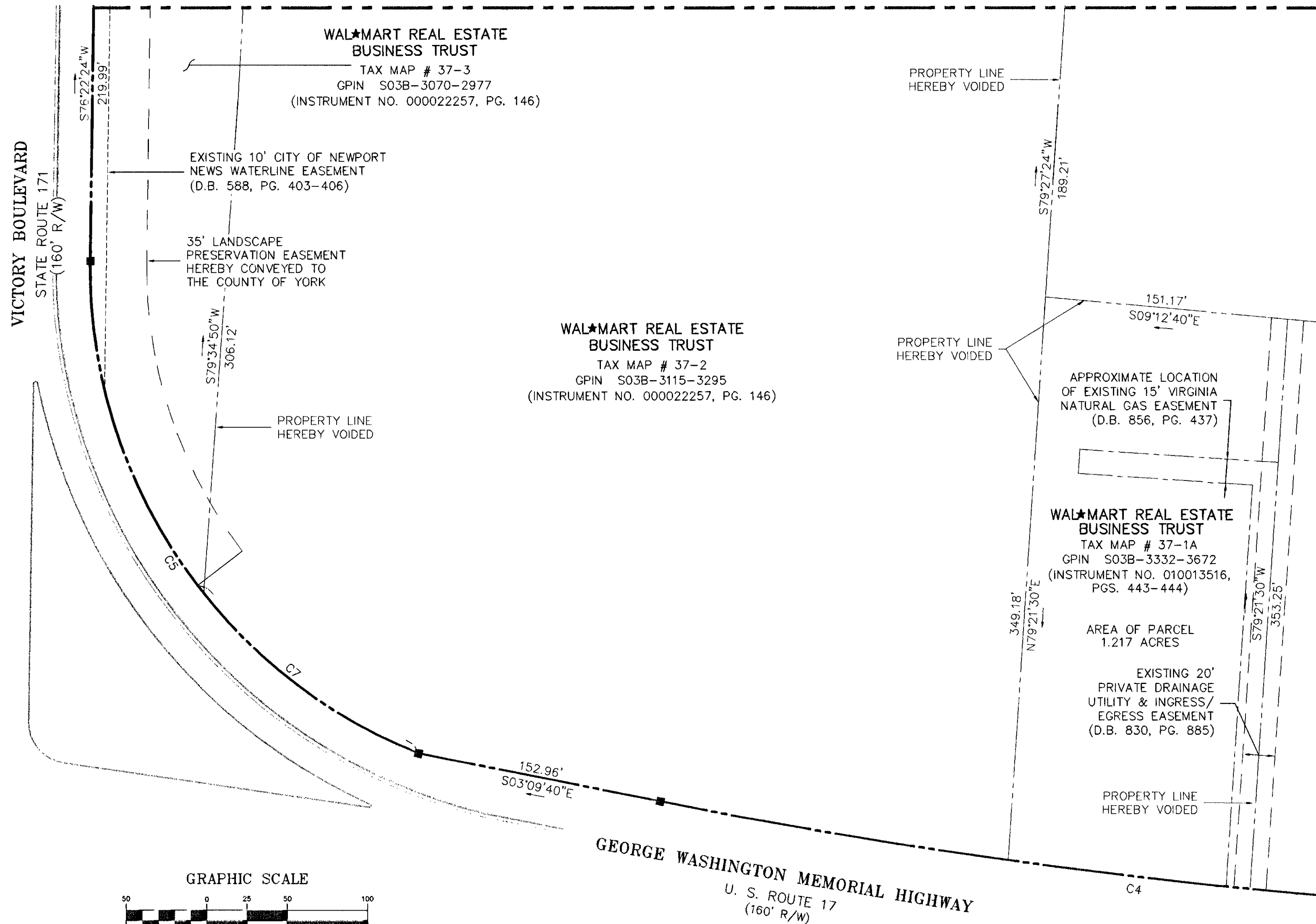
PROJECT NO: 30927.00      DRAWN BY: DWP

**VHIB** *Vanasse Hangen Brustlin, Inc.*  
Transportation Land Development Environmental Services  
11832 Rock Landing Drive, Suite 203  
Newport News, Virginia 23606  
(757) 873-3386 • FAX (757) 873-0157

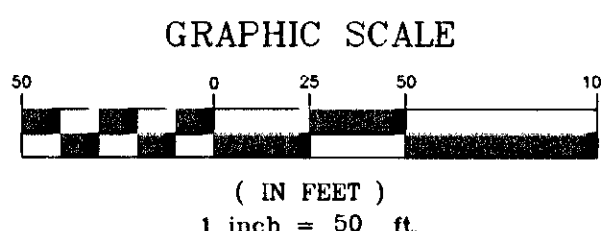


P.B. 5, PG. 73

MATCHLINE - SEE SHEET 4



MATCHLINE - SEE SHEET 2



**APPROVED:**  
**YORK COUNTY BOARD OF SUPERVISORS**

BY: Al Maddalena  
PLAT APPROVING AGENT

DATE: 2-6-2003

**STATE OF VIRGINIA  
COUNTY OF YORK**

IN THE CLERK'S OFFICE OF THE CIRCUIT COURT FOR  
THE COUNTY OF YORK, THE 1<sup>st</sup> DAY OF February, 2003,  
THIS MAP WAS PRESENTED AND ADMITTED TO RECORD AS  
THE LAW DIRECTS AS INSTRUMENT NO. 030003600

TESTE: Lynn S. Jenkins, Clerk  
CLERK

BY: Thelany Thomas, D.C.

\\Vannoy\projects\30927\cad\pl\plans\30927-PL-ADD.dwg, 04/30/02 04:55:01 PM, D:\name, CAD-NN\750C.pcl