

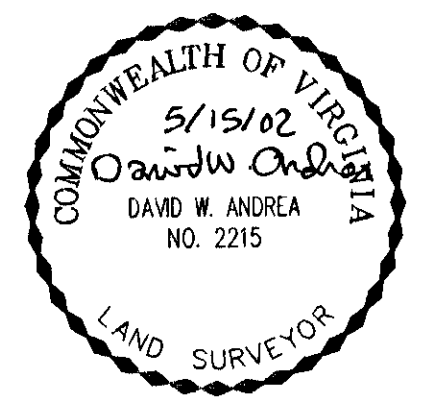
BOUNDARY LINE ADJUSTMENT
AND RIGHT-OF-WAY DEDICATION
PROPERTY OF

**WAL*MART REAL ESTATE
BUSINESS TRUST**
A DELAWARE BUSINESS TRUST

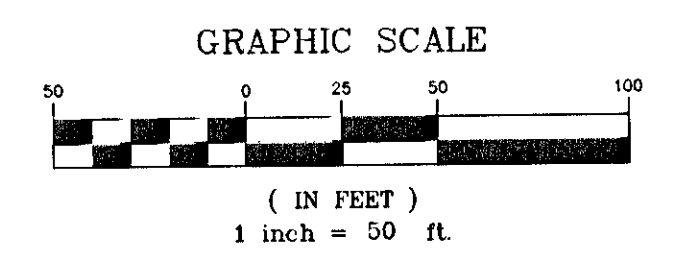
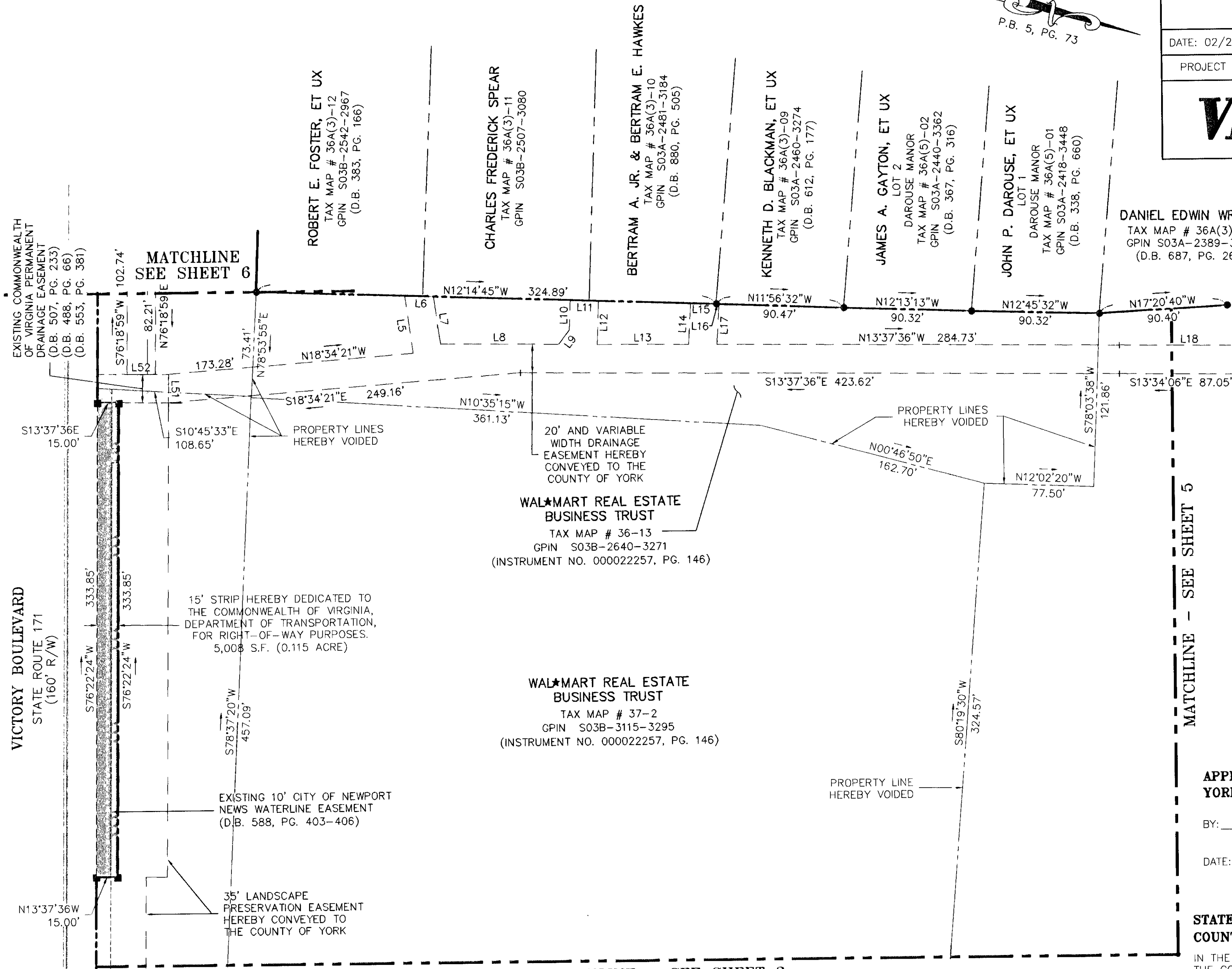
BETHEL MAGISTERIAL DISTRICT
COUNTY OF YORK, VIRGINIA

DATE: 02/23/01 SHEET 4 OF 6 SCALE: 1"=50'
PROJECT NO: 30927.00 DRAWN BY: DWP

VHIB Vanasse Hangen Brustlin, Inc.
Transportation Land Development Environmental Services
11832 Rock Landing Drive, Suite 208
Newport News, Virginia 23606
(757) 873-3386 • FAX (757) 873-0157



DANIEL EDWIN WRIGHT
TAX MAP # 36A(3)-07
GPIN S03A-2389-3533
(D.B. 687, PG. 266)



APPROVED:
YORK COUNTY BOARD OF SUPERVISORS

BY: Al Maddalena
PLAT APPROVING AGENT

DATE: 2-6-2003

STATE OF VIRGINIA
COUNTY OF YORK

IN THE CLERK'S OFFICE OF THE CIRCUIT COURT FOR THE COUNTY OF YORK, THE 11th DAY OF February, 2003, THIS MAP WAS PRESENTED AND ADMITTED TO RECORD AS THE LAW DIRECTS AS INSTRUMENT NO. 030003600

TESTE: Lynn S. Jenkins, Clerk
CLERK

BY: Melaney Thomas D.C.