

EXHIBIT "C"

PLAT OF
RAINBROOK VILLAS
A CONDOMINIUM
PHASE XVIII (INSTR.#020005988)

SHEET 1 OF 5

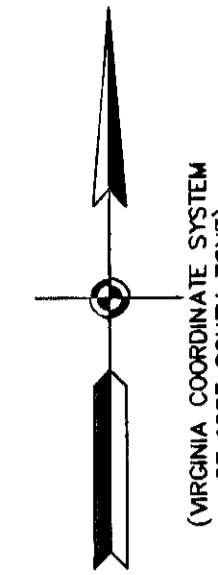
GRAFTON DISTRICT - COUNTY OF YORK, VIRGINIA
SCALE: 1" = 100' OCTOBER 10, 2002

0 50 100 200 300 400 FEET

GRAPHIC SCALE

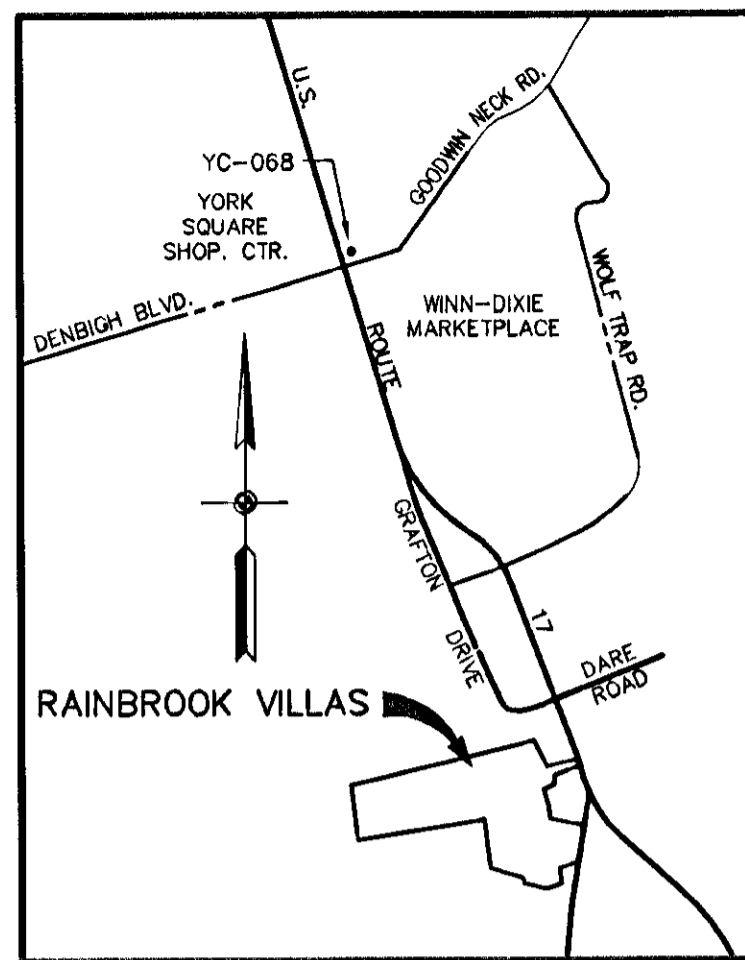
THE SIRINE GROUP, LTD.

SURVEYORS • ENGINEERS • PLANNERS
4794 GEORGE WASHINGTON MEMORIAL HIGHWAY
U.S. ROUTE 17
P.O. BOX 450
WHITE MARSH, VIRGINIA 23183



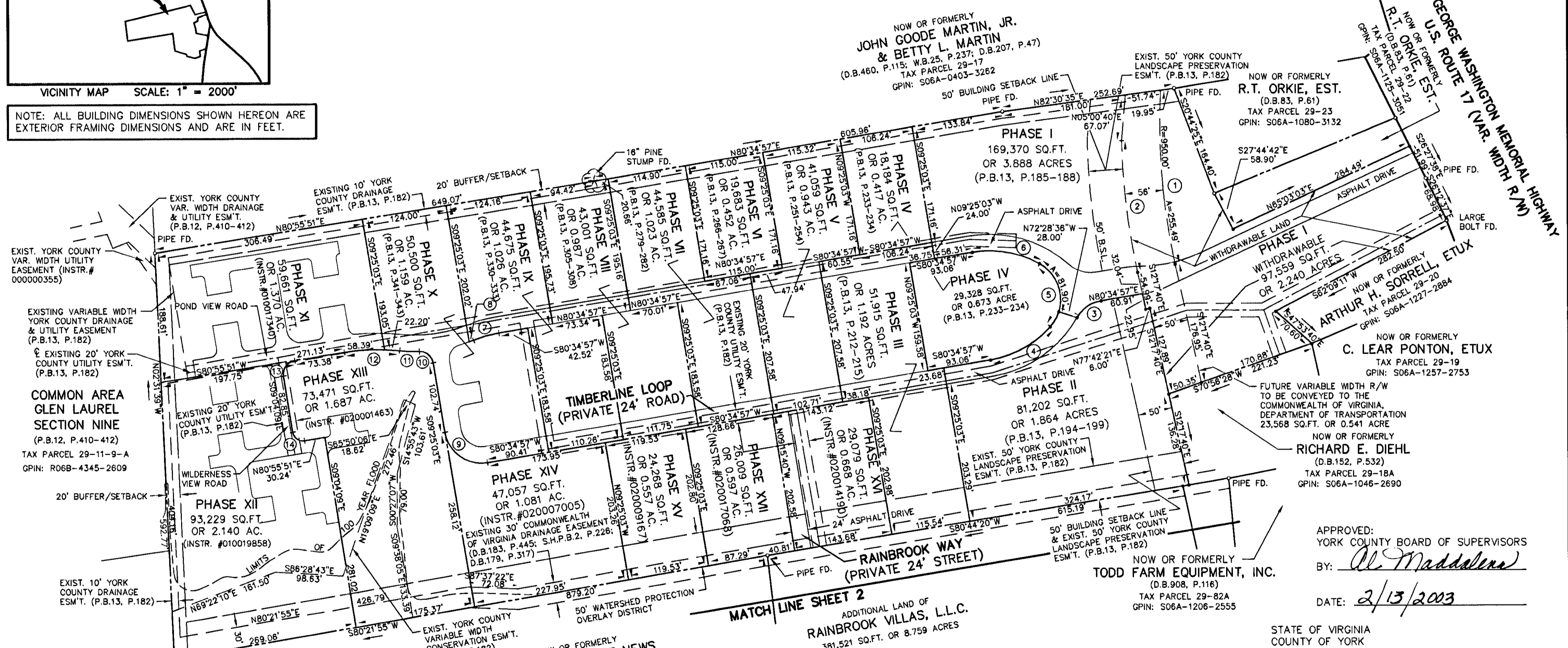
NO.	RADIUS	DELTA	ARC	TANGENT	CHORD	CHORD BRG.
1	950.00'	15°24'33"	255.49'	128.52'	254.72'	S04°35'23"E
2	1006.00'	11°02'41"	193.92'	97.26'	193.62'	N06°46'19"W
3	50.00'	50°45'18"	44.29'	23.72'	42.86'	N55°12'18"E
4	150.00'	38°43'45"	101.39'	52.72'	99.47'	N61°13'04"E
5	60.00'	102°32'30"	107.38'	74.81'	93.61'	N09°25'03"W
6	150.00'	38°43'45"	101.39'	52.72'	99.47'	N80°03'10"W
7	176.00'	12°28'12"	38.31'	19.23'	38.23'	N74°20'51"E
8	224.00'	01°45'06"	6.85'	3.42'	6.85'	N68°59'18"E
9	54.00'	90°00'00"	84.82'	54.00'	76.37'	N54°25'03"W
10	20.00'	81°37'46"	28.49'	17.27'	26.14'	N50°13'56"W
11	224.00'	07°22'12"	28.81'	14.43'	28.79'	N87°21'43"W
12	300.00'	15°23'32"	80.59'	40.54'	80.35'	S88°37'37"W
13	20.00'	90°00'00"	31.42'	20.00'	28.28'	S35°55'51"W
14	15.00'	90°00'00"	23.56'	15.00'	21.21'	S54°04'09"E
15	76.00'	46°31'09"	61.71'	32.67'	60.02'	S29°45'02"E

NOTE: PROPERTY LIES IN ZONE X, WHITE. (AREAS DETERMINED TO BE OUTSIDE 500-YEAR FLOOD PLAIN), AS SHOWN ON FLOOD INSURANCE RATE MAP FOR YORK COUNTY, VIRGINIA, COMM. NO. 510182 0036B, 12/16/88 AND COMM. NO. 510182 0037B, 12/16/88.



VICINITY MAP SCALE: 1" = 2000'

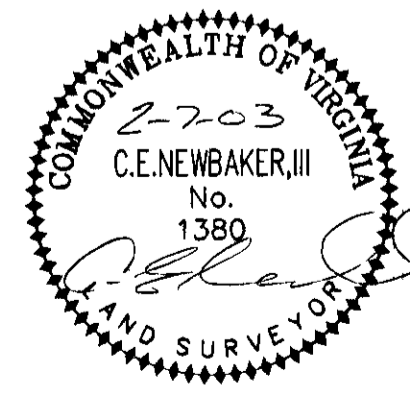
NOTE: ALL BUILDING DIMENSIONS SHOWN HEREON ARE EXTERIOR FRAMING DIMENSIONS AND ARE IN FEET.



UTILITY NOTES:
WATER: EACH UNIT WITHIN THIS CONDOMINIUM IS SERVED BY PUBLIC WATER PROVIDED BY THE CITY OF NEWPORT NEWS.
SEWER: EACH UNIT WITHIN THIS CONDOMINIUM IS SERVED BY PUBLIC SEWER PROVIDED BY THE COUNTY OF YORK AND H.R.S.D.

PHASE XVIII AREA = 65,825 SQ.FT. OR 1.511 ACRES
ADDITIONAL AREA = 381,521 SQ.FT. OR 8.759 ACRES
TOTAL AREA = 1,393,622 SQ.FT. OR 31.993 ACRES

THIS PROPERTY IS SUBJECT TO COVENANTS, CONDITIONS, RESTRICTIONS, EASEMENTS, LIENS FOR ASSESSMENTS, OPTIONS, POWER OF ATTORNEYS, AND LIMITATIONS ON TITLE, CREATED BY THE VIRGINIA CONDOMINIUM STATUTE.



NOW OR FORMERLY
CITY OF NEWPORT NEWS
(D.B.591, P.385)
TAX PARCEL 23-00-00-014
GPIN: R06C-1589-2324

MATCH LINE SHEET 2
ADDITIONAL LAND OF
RAINBROOK VILLAS, L.L.C.
381,521 SQ.FT. OR 8.759 ACRES

APPROVED:
YORK COUNTY BOARD OF SUPERVISORS
BY: *Al. Maddalena*
DATE: 2/13/2003

STATE OF VIRGINIA
COUNTY OF YORK
IN THE CLERK'S OFFICE OF THE CIRCUIT COURT,
FOR THE COUNTY OF YORK, VIRGINIA, THE 14th
DAY OF February, 2003, THIS PLAT
WAS PRESENTED AND ADMITTED TO RECORD AS
THE LAW DIRECTS AS INSTRUMENT NUMBER:
030004026
TESTE: *Lynn S. Jenkins*, Clerk
CLERK
BY: *Melany Thomas*, D.C.
DEPUTY CLERK

PROPERTY IS ASSESSOR'S PARCEL 29-00-00-018
GPIN: S06C-0684-2246