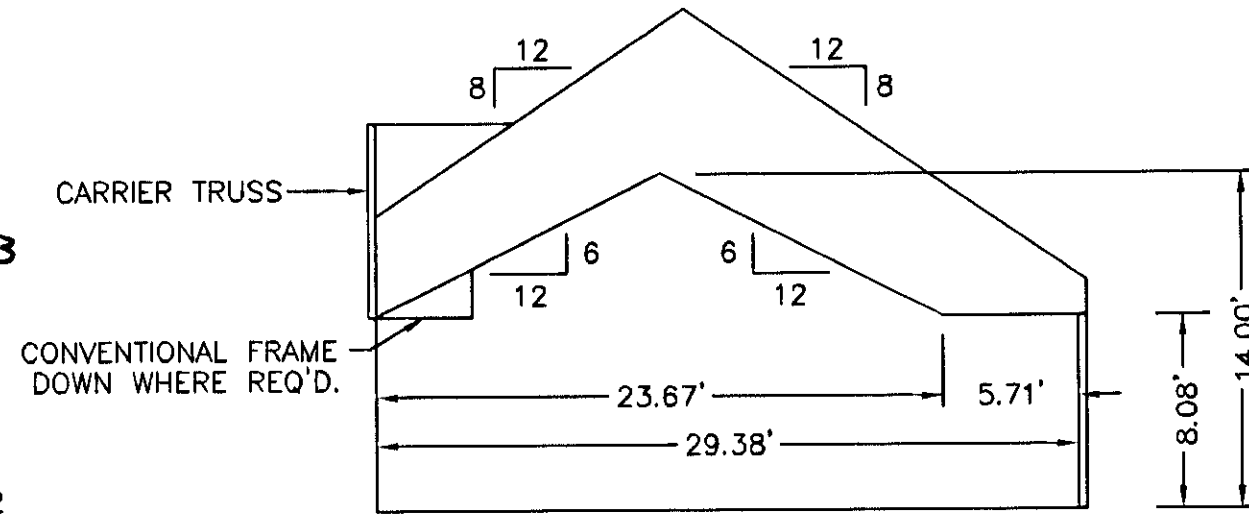
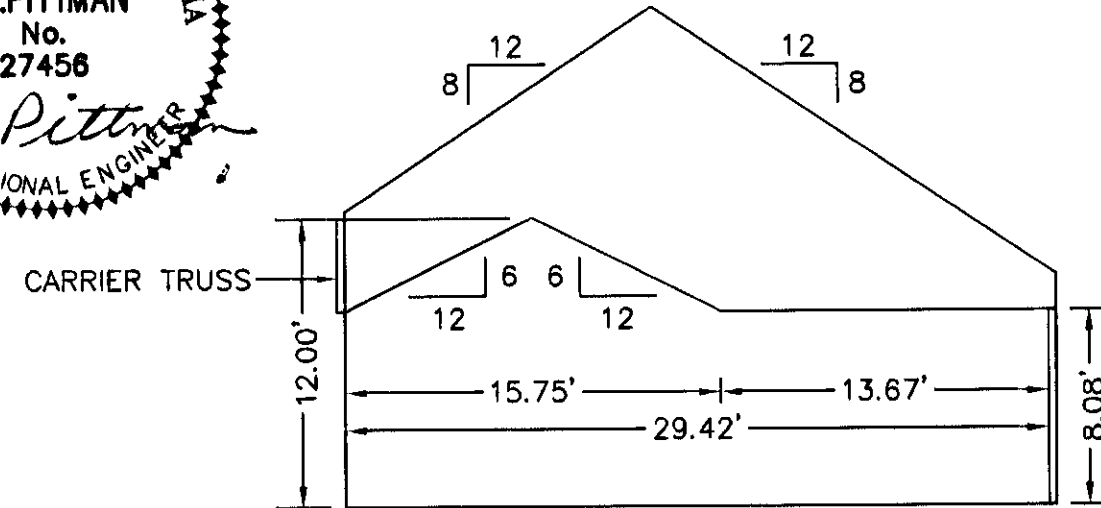


THE UNDERSIGNED CERTIFIES THAT THIS PLAN IS ACCURATE AND COMPLIES WITH THE PROVISIONS OF THE CODE OF VIRGINIA SECTION 55-79.58 (b) AND ALL UNITS DEPICTED HEREON HAVE BEEN SUBSTANTIALLY COMPLETED.

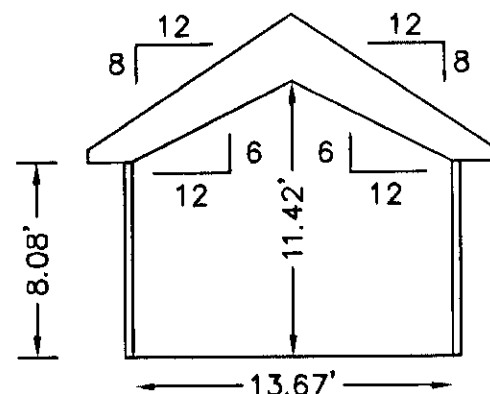
SIGNED: *C.L. Pittman* DATE: 2/7/2003
C.L. PITTMAN, P.E.



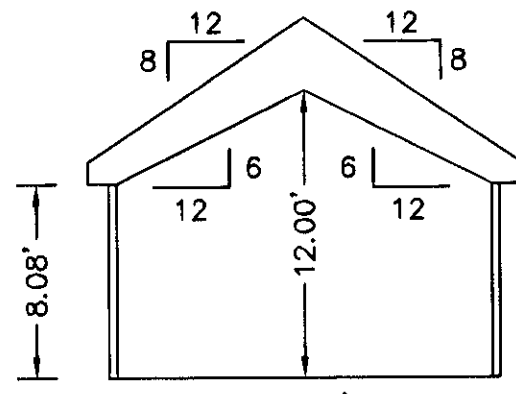
SECTION F-F



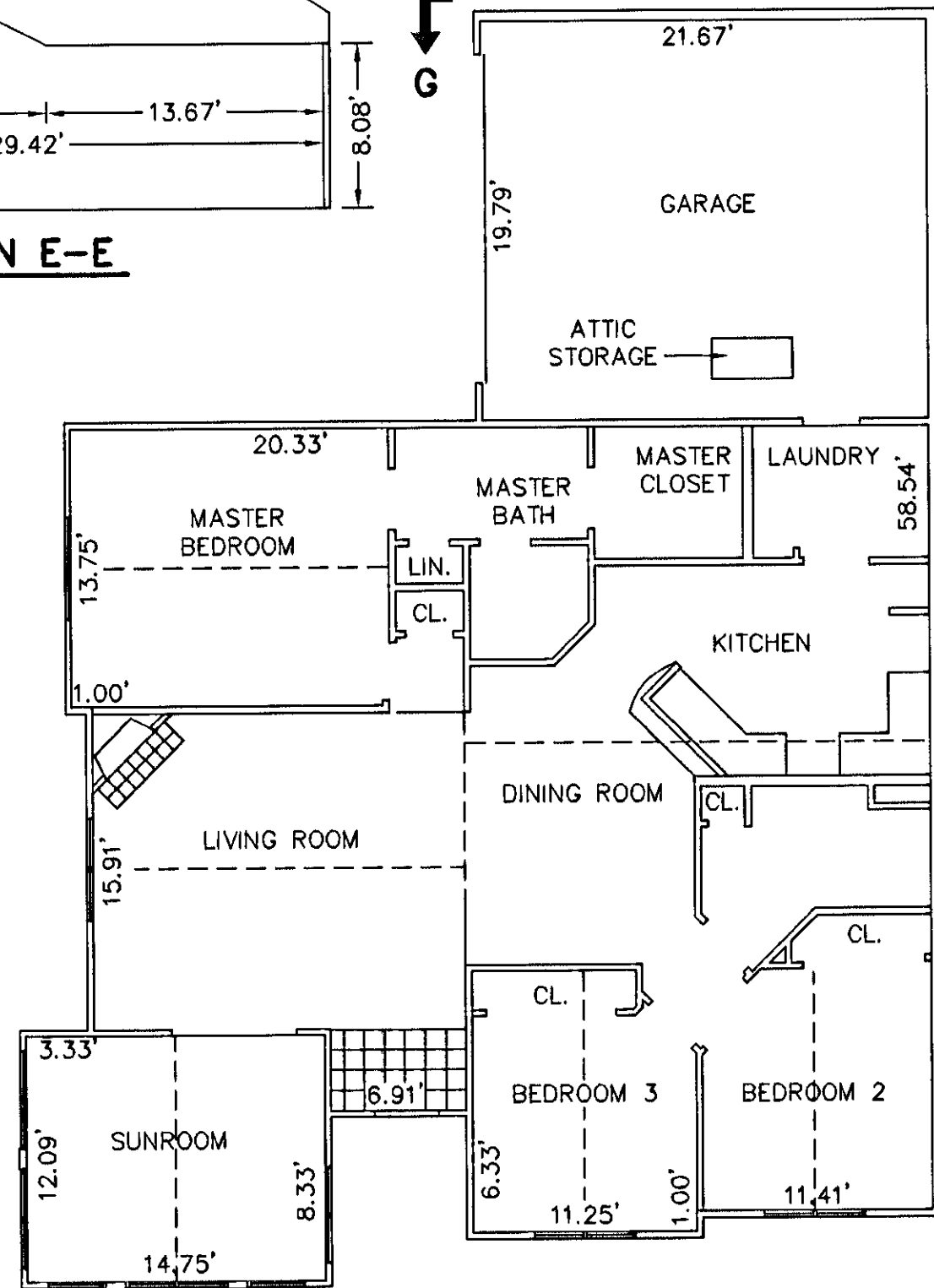
SECTION E-E



SECTION C-C

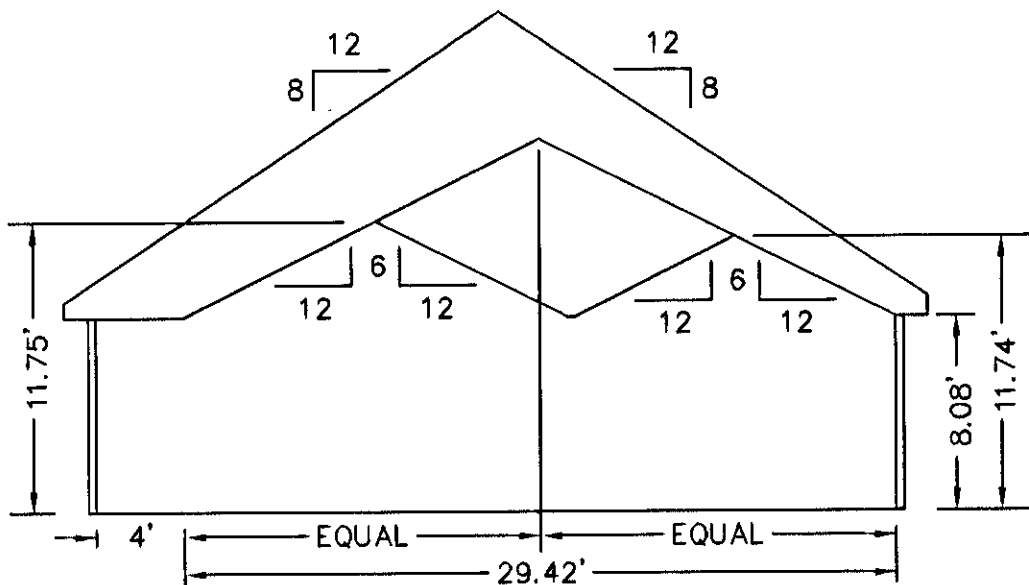


SECTION B-B
ENCLOSED PORCH

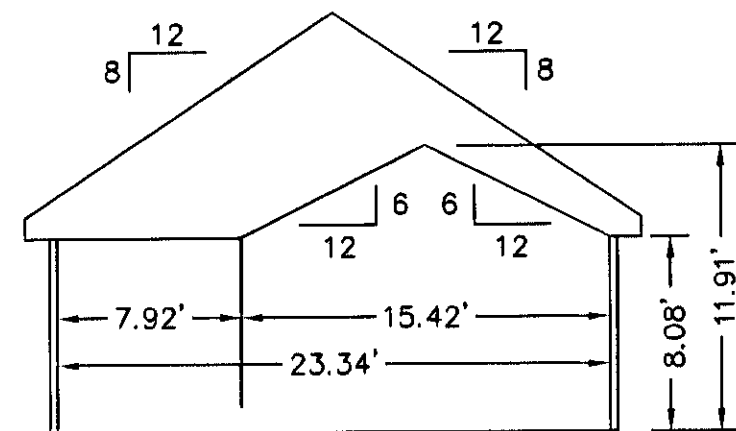


BUILDING 29-4 - CANTERBURY

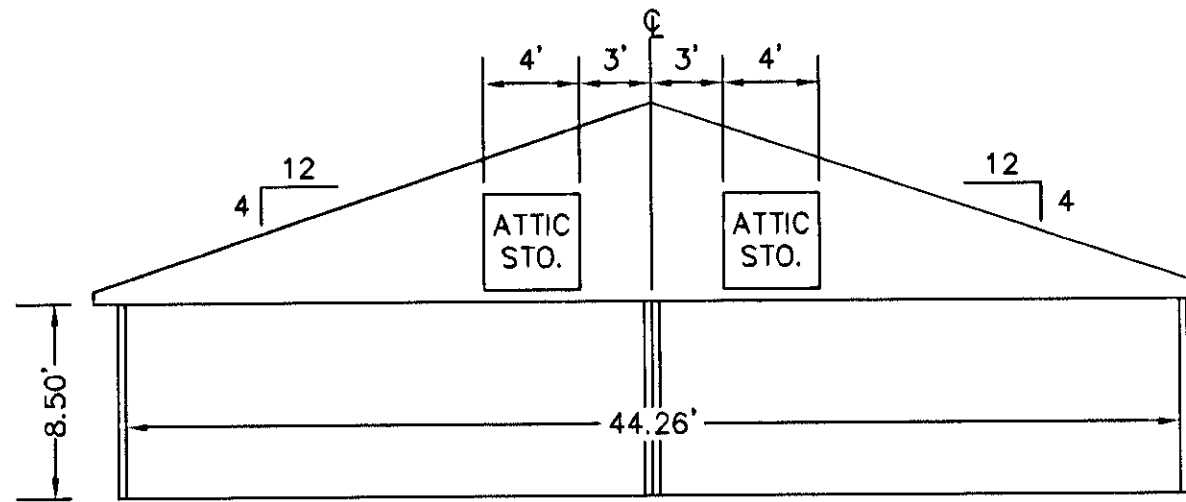
FLOOR PLAN
W/ ENCLOSED PORCH



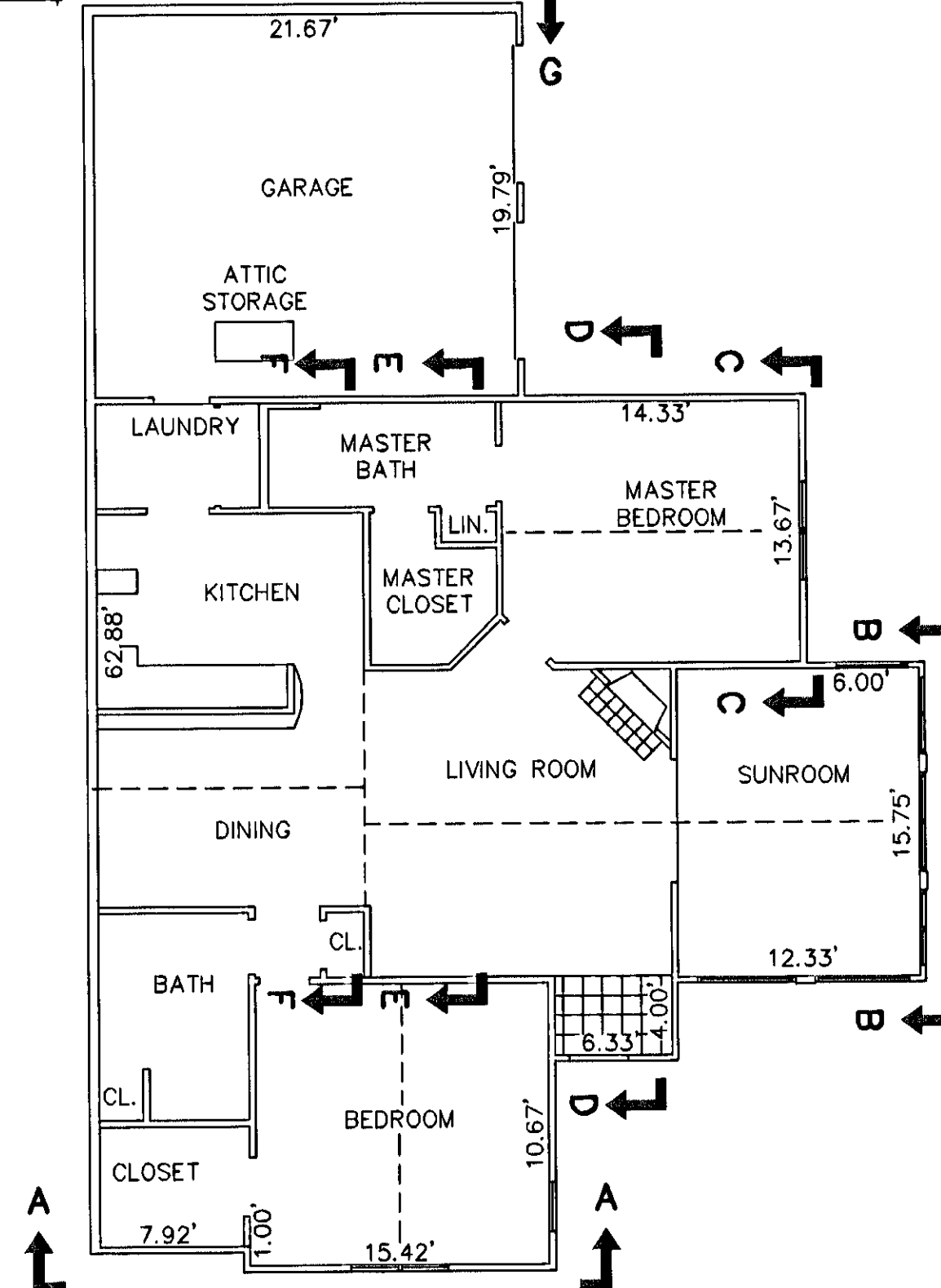
SECTION D-D



SECTION A-A



SECTION G-G
GARAGE



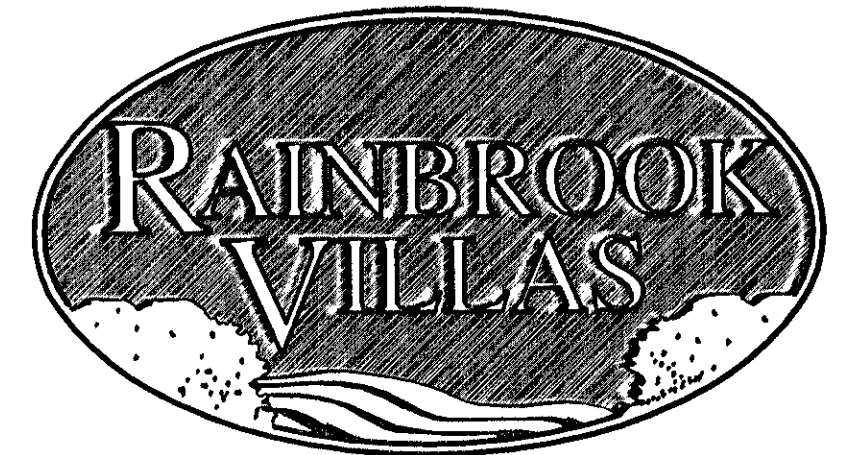
BUILDING 29-1 & 29-3 - ABBEY

FLOOR PLAN
W/ ENCLOSED PORCH



EXHIBIT "D"
PLAT OF
RAINBROOK VILLAS
A CONDOMINIUM
PHASE XVIII
SHEET 4 OF 5
GRAFTON DISTRICT - COUNTY OF YORK, VIRGINIA
SCALE: 1/8" = 1'-0" OCTOBER 10, 2002

THE SIRINE GROUP, LTD.
SURVEYORS • ENGINEERS • PLANNERS
4794 GEORGE WASHINGTON MEMORIAL HIGHWAY
U.S. ROUTE 17
P.O. BOX 450
WHITE MARSH, VIRGINIA 23183



APPROVED:
YORK COUNTY BOARD OF SUPERVISORS

BY: *Al. Maddalena*

DATE: 2/13/2003

NOTES:
1. ALL BUILDING DIMENSIONS SHOWN HEREON ARE INTERIOR DIMENSIONS AND ARE IN FEET.

STATE OF VIRGINIA
COUNTY OF YORK

IN THE CLERK'S OFFICE OF THE CIRCUIT COURT FOR THE COUNTY OF YORK THE 14th DAY OF February, 2003, THIS PLAT WAS PRESENTED AND ADMITTED TO RECORD AS THE LAW DIRECTS AS INSTRUMENT NUMBER 030004026

TESTE: *Lynn S. Jenkins*
CLERK

BY: *Melany Thomas J.C.*