

THE UNDERSIGNED CERTIFIES THAT THIS PLAN IS ACCURATE AND COMPLIES WITH THE PROVISIONS OF THE CODE OF VIRGINIA SECTION 55-79.58 (b) AND ALL UNITS DEPICTED HEREON HAVE BEEN SUBSTANTIALLY COMPLETED.

SIGNED: C.L. Pittman DATE: 2/7/2003
C.L. PITTMAN, P.E.

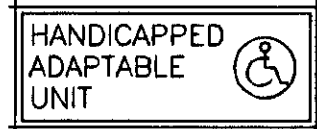
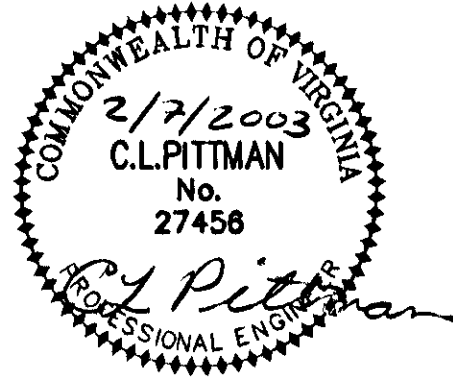
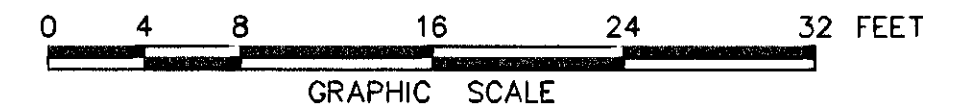
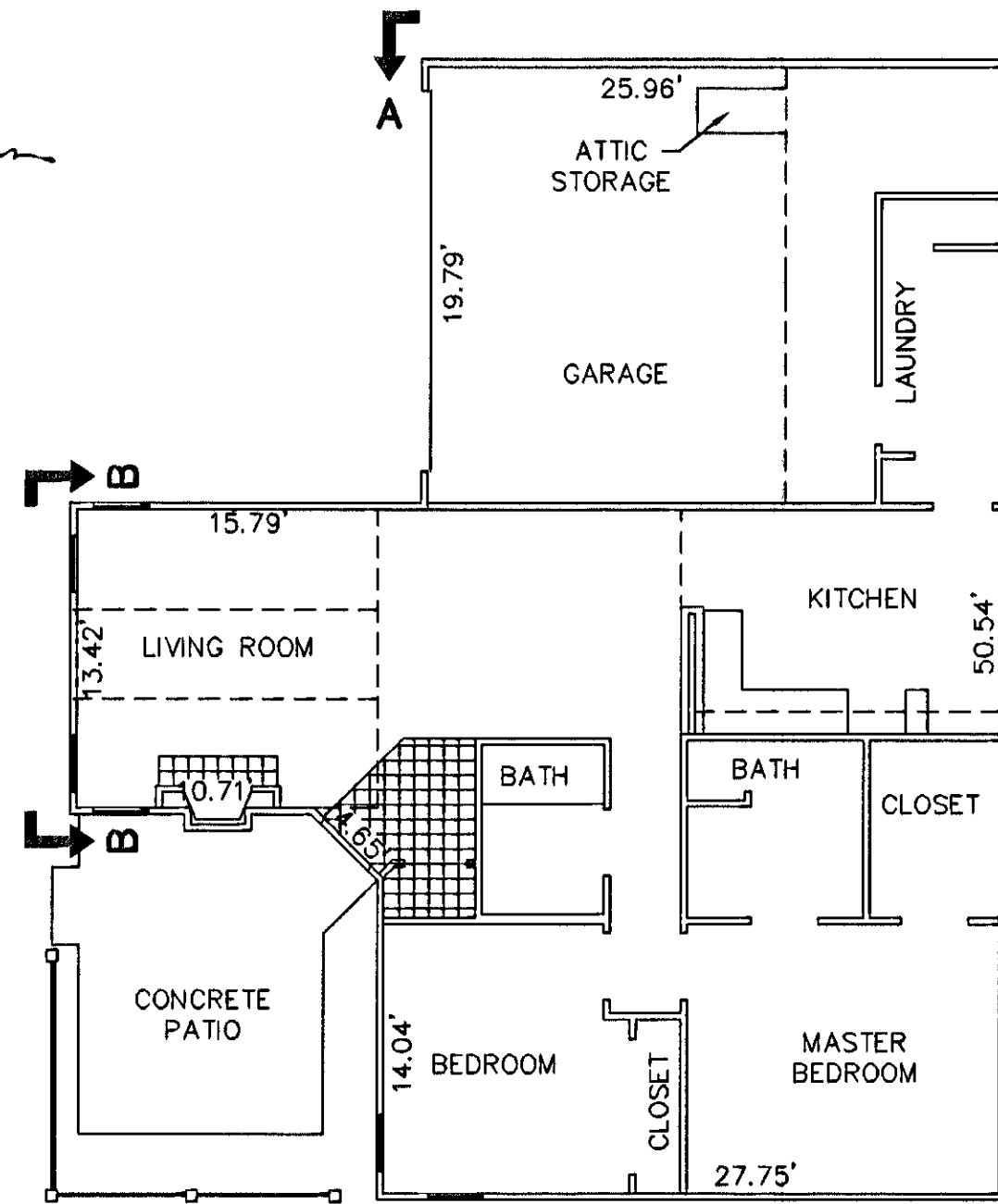
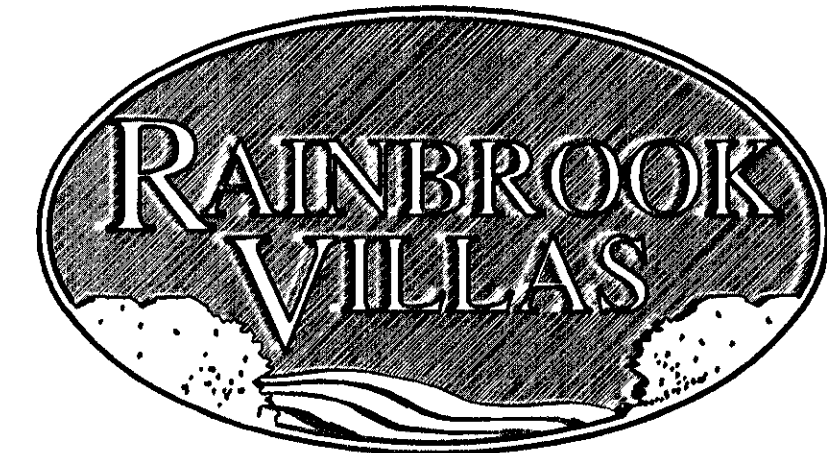


EXHIBIT "D"
PLAT OF
RAINBROOK VILLAS
A CONDOMINIUM
PHASE XVII

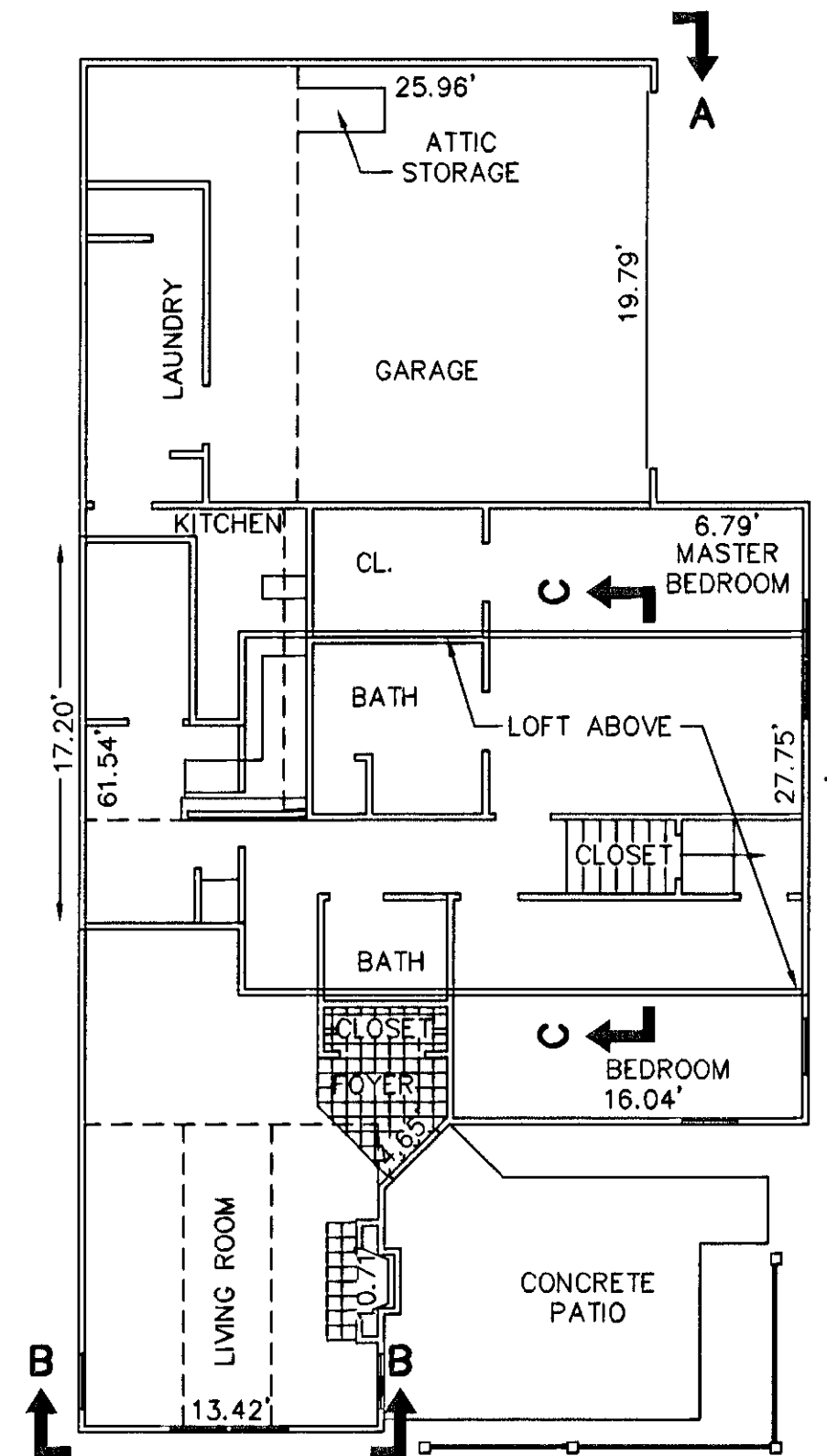
SHEET 5 OF 5
GRAFTON DISTRICT - COUNTY OF YORK, VIRGINIA
SCALE: 1/8" = 1'-0" OCTOBER 10, 2001



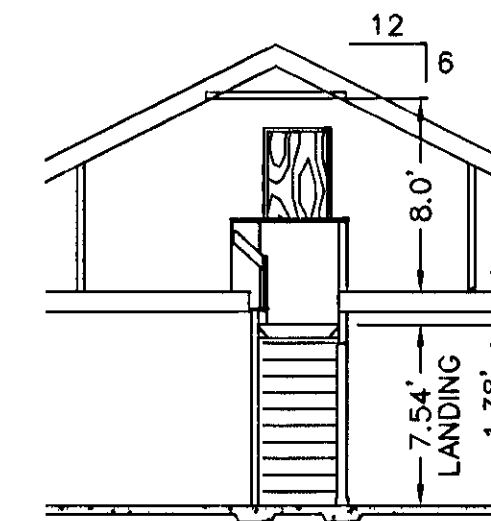
THE SIRINE GROUP, LTD.
SURVEYORS • ENGINEERS • PLANNERS
4794 GEORGE WASHINGTON MEMORIAL HIGHWAY
U.S. ROUTE 17
P.O. BOX 450
WHITE MARSH, VIRGINIA 23183



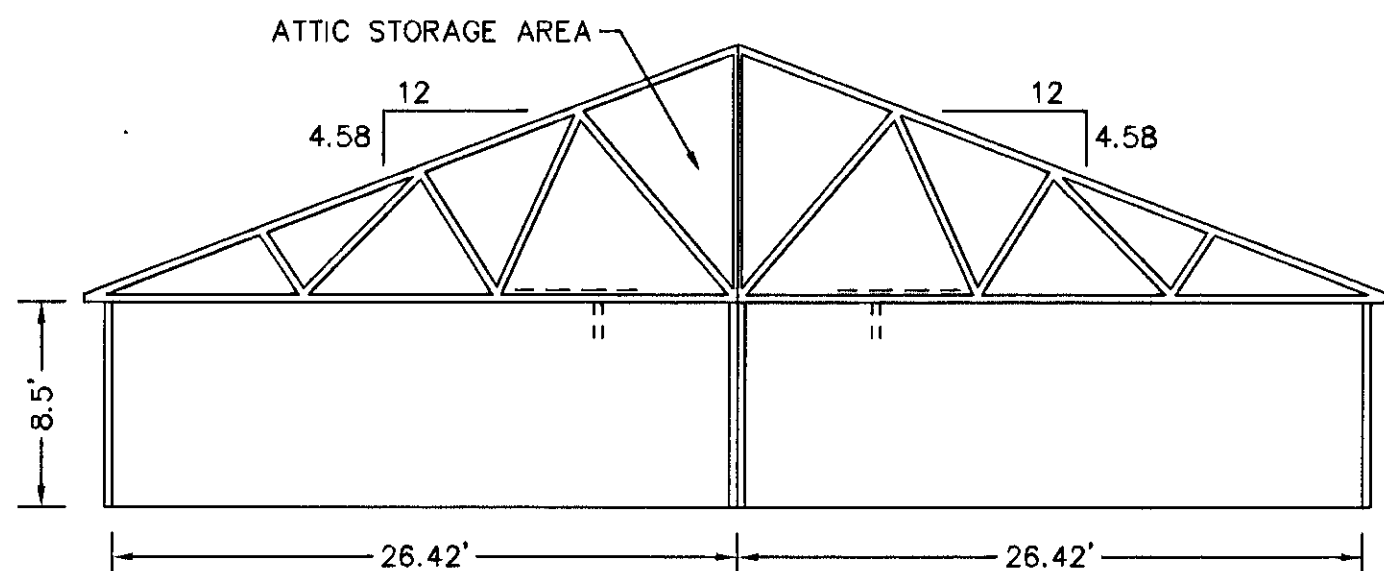
BUILDING 30-1, & 30-3 - VILLA
FLOOR PLAN
W/ CONCRETE PATIO



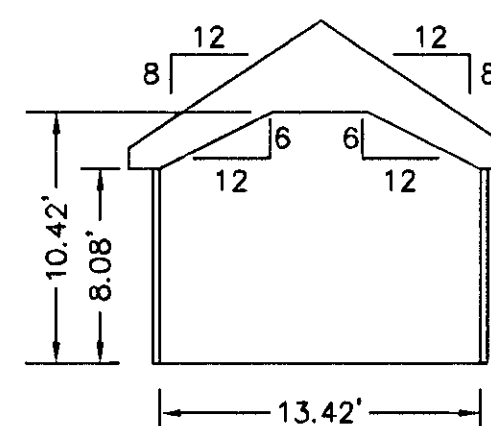
BUILDING 30-2, & 30-4 - CHATEAU
FLOOR PLAN
W/ CONCRETE PATIO



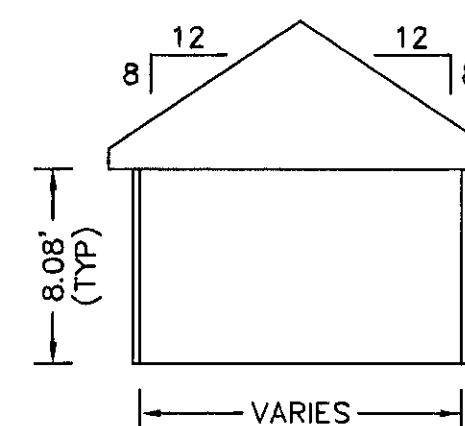
SECTION C-C
LOFT



SECTION A-A
GARAGE



SECTION B-B



TYPICAL
ROOM SECTION

APPROVED:
YORK COUNTY BOARD OF SUPERVISORS

BY: A. Maddalena

DATE: 2/13/2003

NOTES:
1. ALL BUILDING DIMENSIONS SHOWN HEREON ARE INTERIOR DIMENSIONS AND ARE IN FEET.

STATE OF VIRGINIA
COUNTY OF YORK

IN THE CLERK'S OFFICE OF THE CIRCUIT COURT FOR THE COUNTY OF YORK THE 14TH DAY OF February, 2003 THIS PLAT WAS PRESENTED AND ADMITTED TO RECORD AS THE LAW DIRECTS IN PLAT BOOK _____, PAGE _____.

TESTE: Lynn S. Jenkins
CLERK

BY: Melaney Thomas D.C.

030004026 11:39 am