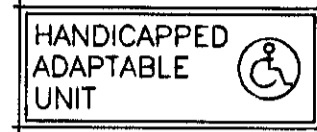
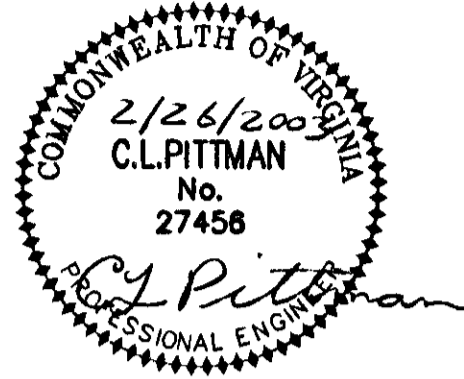


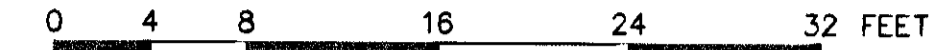
THE UNDERSIGNED CERTIFIES THAT THIS PLAN IS ACCURATE AND COMPLIES WITH THE PROVISIONS OF THE CODE OF VIRGINIA SECTION 55-79.58 (b) AND ALL UNITS DEPICTED HEREON HAVE BEEN SUBSTANTIALLY COMPLETED.

SIGNED: *C.L. Pittman* DATE: *2/26/2003*  
C.L. PITTMAN, P.E.



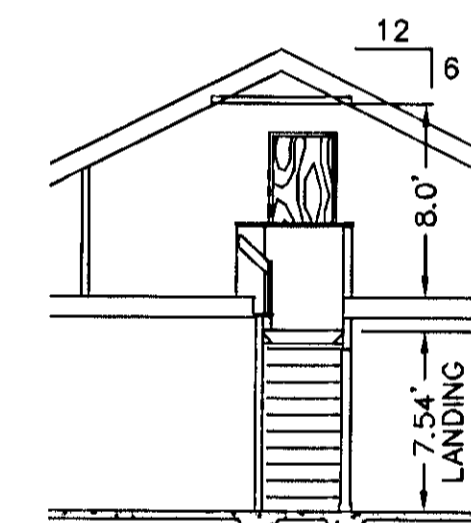
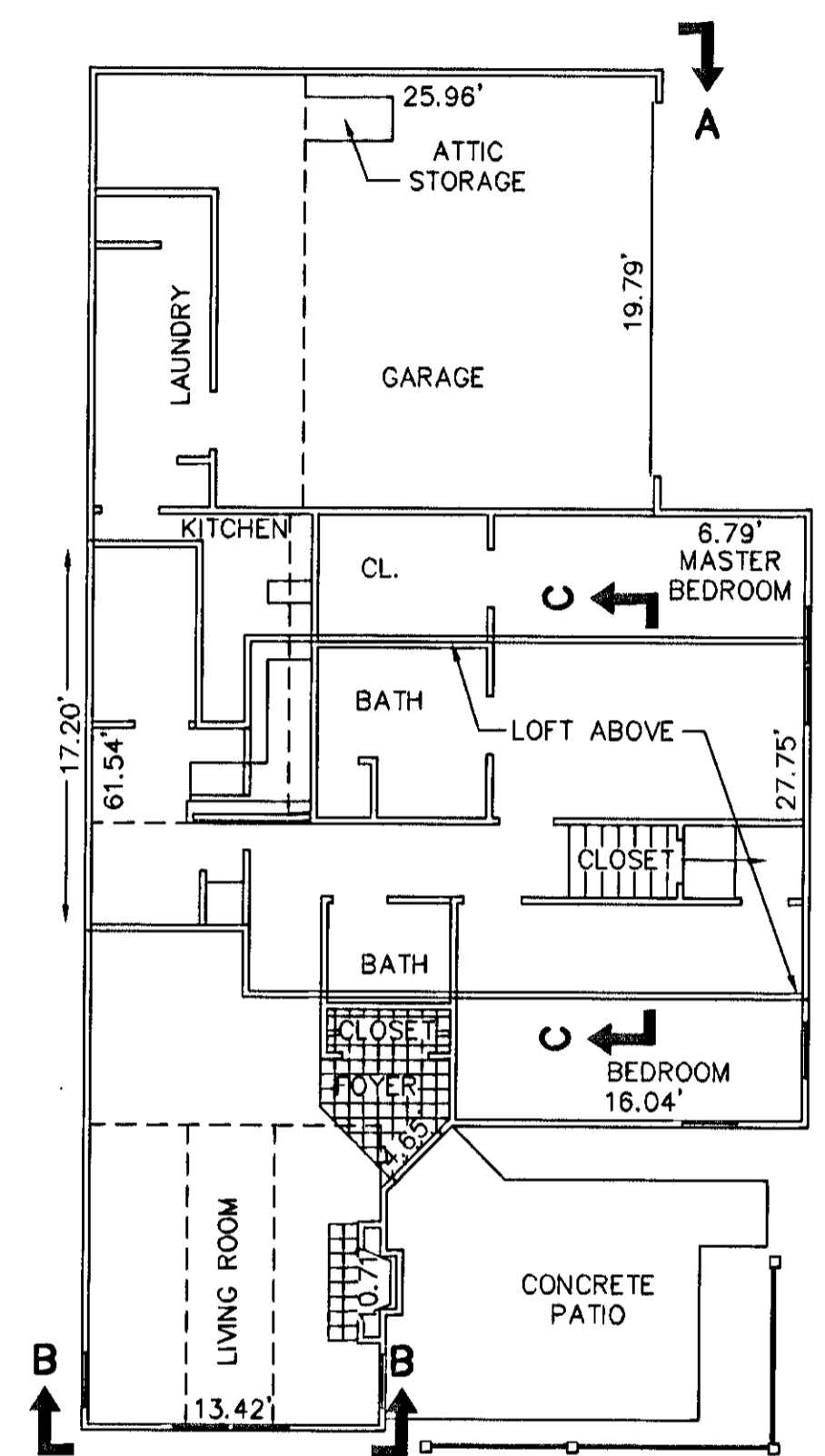
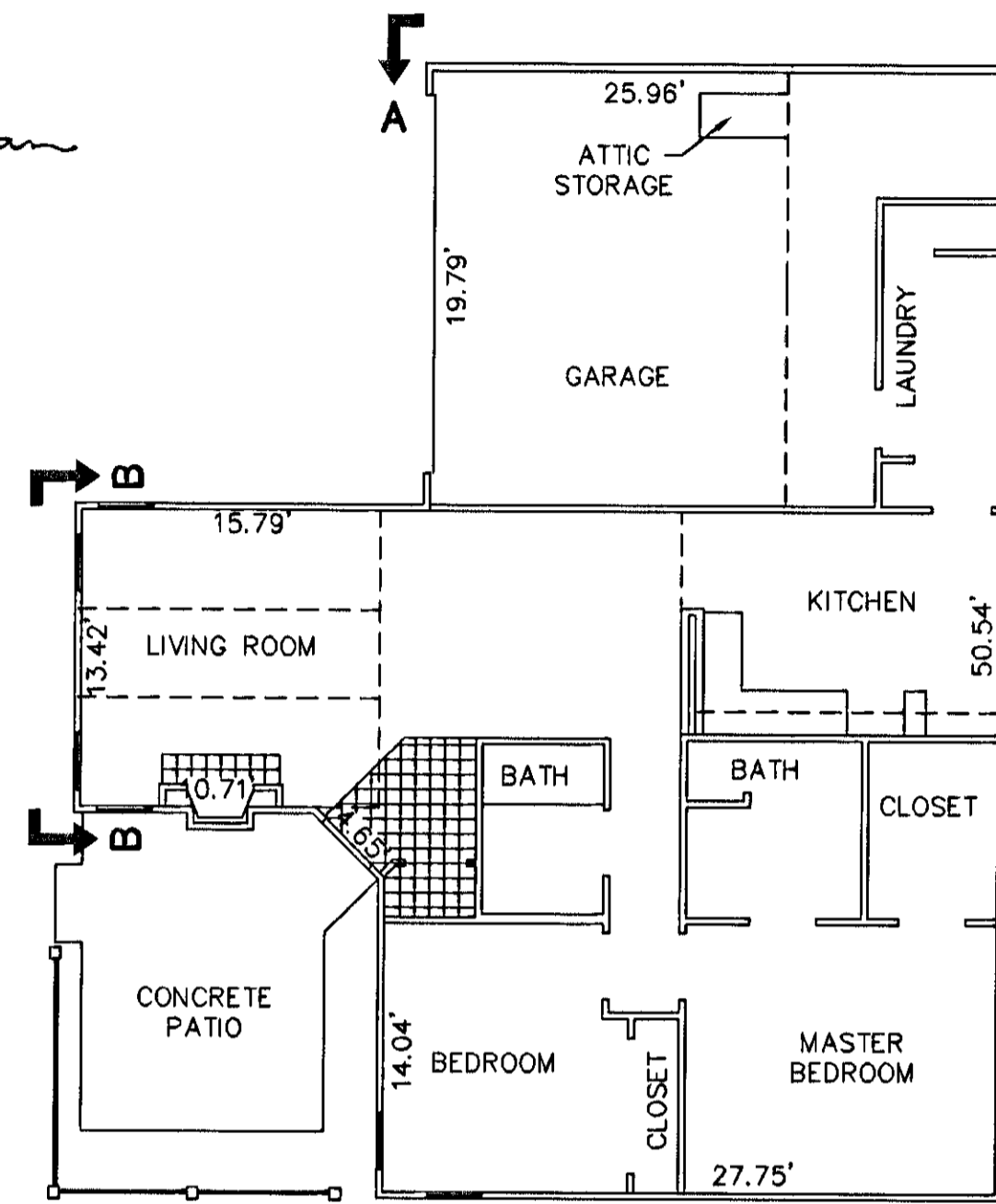
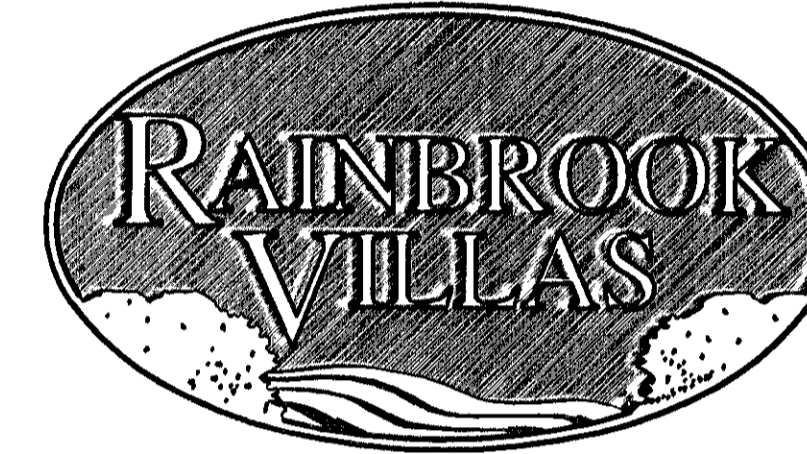
**EXHIBIT "D"**  
PLAT OF  
**RAINBROOK VILLAS**  
**A CONDOMINIUM**  
**PHASE XVII**  
SHEET 5 OF 5

GRAFTON DISTRICT - COUNTY OF YORK, VIRGINIA  
SCALE: 1/8" = 1'-0" OCTOBER 10, 2001  
REVISED: FEBRUARY 21, 2003



GRAPHIC SCALE

THE SIRINE GROUP, LTD.  
SURVEYORS • ENGINEERS • PLANNERS  
4794 GEORGE WASHINGTON MEMORIAL HIGHWAY  
U.S. ROUTE 17  
P.O. BOX 450  
WHITE MARSH, VIRGINIA 23183



**SECTION C-C**  
**LOFT**

*Sobc-0684-2246*

**BUILDING 30-2, & 30-4 - VILLA**  
**FLOOR PLAN**  
**W/ CONCRETE PATIO**

**BUILDING 30-1, & 30-3 - CHATEAU**  
**FLOOR PLAN**  
**W/ CONCRETE PATIO**

**PLAT INSTRUMENT # 03000553**

APPROVED:  
YORK COUNTY BOARD OF SUPERVISORS

BY: *Al. Maddalena*

DATE: *2/27/2003*

**NOTES:**

1. ALL BUILDING DIMENSIONS SHOWN HEREON ARE INTERIOR DIMENSIONS AND ARE IN FEET.

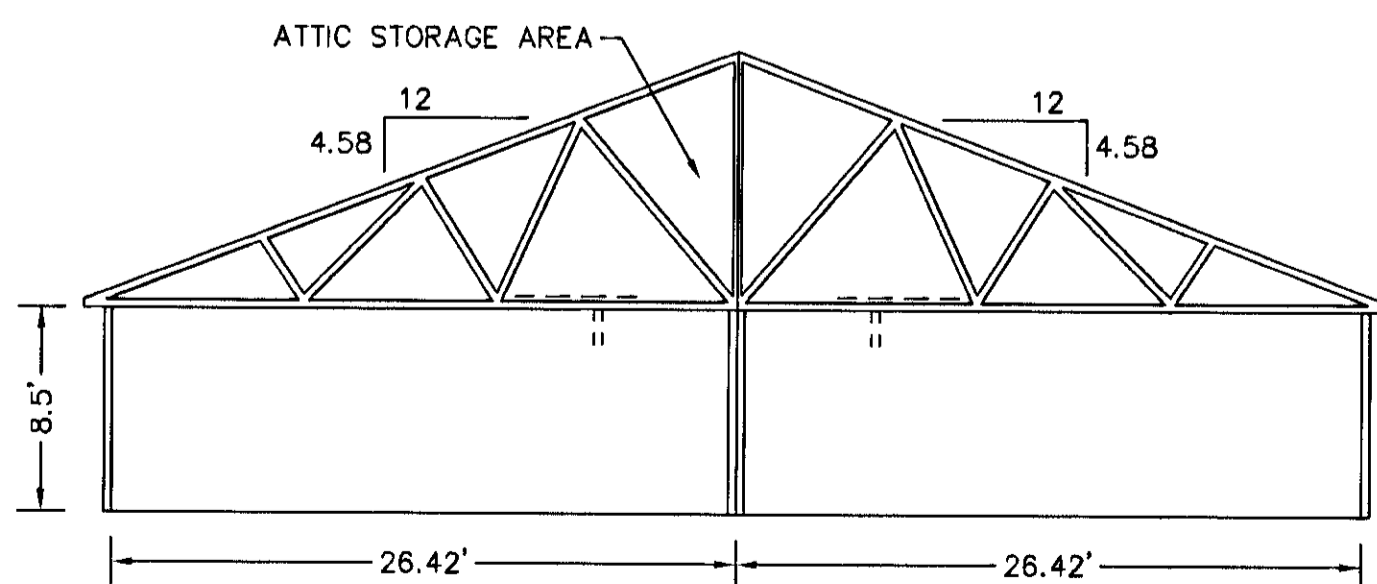
STATE OF VIRGINIA

COUNTY OF YORK,

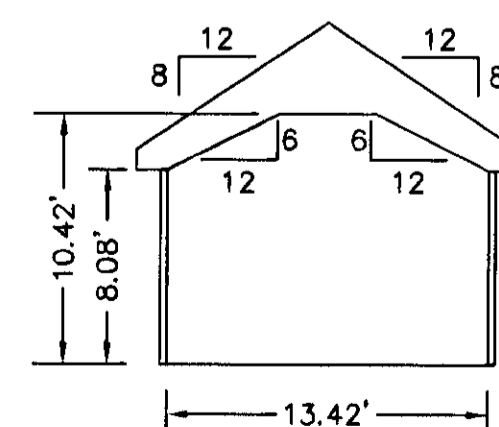
IN THE CLERK'S OFFICE OF THE CIRCUIT COURT FOR THE COUNTY OF YORK THE *27th* DAY OF *February*, 2003, THIS PLAT WAS PRESENTED AND ADMITTED TO RECORD AS THE LAW DIRECTS IN PLAT BOOK \_\_\_\_\_, PAGE \_\_\_\_\_ *12:04 pm*

TESTE: *Lynn S. Jenkins*  
CLERK

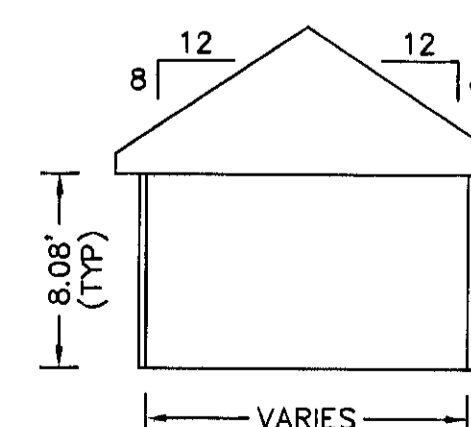
BY: *Lise Brogden, P.C.*



**SECTION A-A**  
**GARAGE**



**SECTION B-B**



**TYPICAL**  
**ROOM SECTION**