

PLAT OF SUBDIVISION
THE GREENLANDS
 PHASE FOUR
 BETHEL MAGISTERIAL DISTRICT
 COUNTY OF YORK, VIRGINIA

DATE: 8/15/02 SHEET 2 OF 6 SCALE: 1"=50'
 PROJECT NO: 30858.00 DRAWN BY: DWP

VHB Vanasse Hangen Brustlin, Inc.
 Transportation Land Development Environmental Services
 11832 Rock Landing Drive, Suite 203
 Newport News, Virginia 23606-4231
 (757) 873-3386 • FAX (757) 873-0757

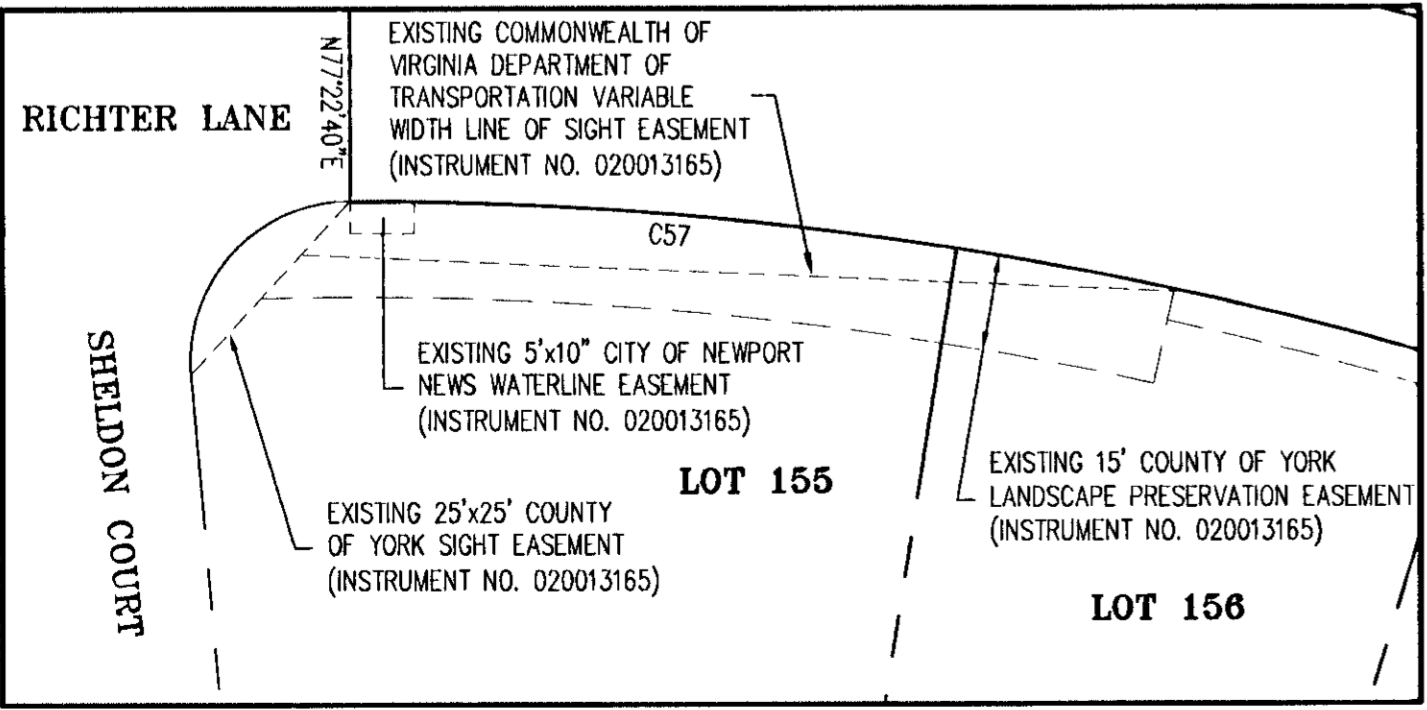
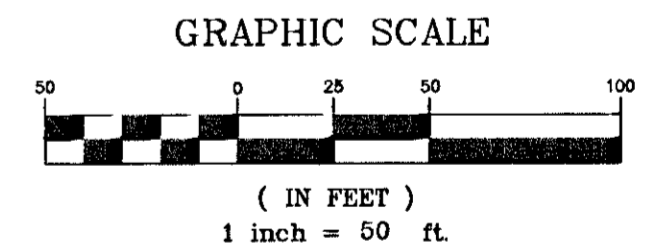
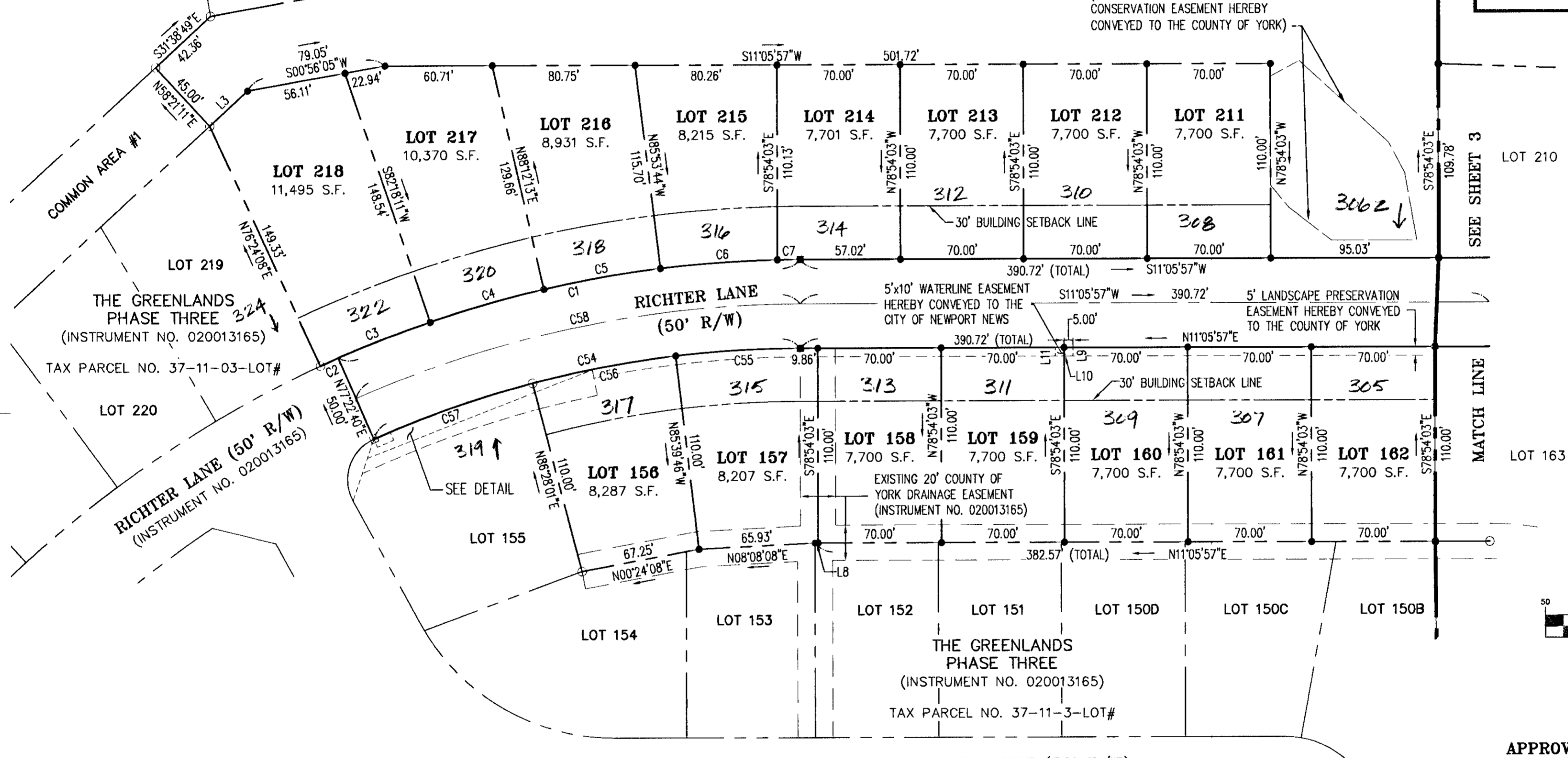


NOW OR FORMERLY
 COUNTY SCHOOL BOARD OF YORK COUNTY
 (D.B. 509, PG. 467)
 TAX PARCEL NO.
 37-00-00-064

NOW OR FORMERLY
 HOOVER HIGGINS
 (D.B. 84, PG. 17)
 TAX PARCEL NO.
 37E-01-00-018

COMMON AREA #3
 109,913 S.F. (TOTAL)

LIMITS OF NONTIDAL JURISDICTIONAL
 WETLANDS (P.B. 12, PG. 582)
 (VARIABLE WIDTH WETLANDS
 CONSERVATION EASEMENT HEREBY
 CONVEYED TO THE COUNTY OF YORK)



SHELDON COURT (50' R/W)
 (INSTRUMENT NO. 020013165)

- LEGEND**
- INDICATES IRON ROD FOUND
 - INDICATES IRON ROD TO BE SET
 - INDICATES V.D.H. CONC. MON. FOUND
 - INDICATES CONC. MON. TO BE SET
 - - - - - INDICATES APPROXIMATE TOP OF BANK
 - - - - - INDICATES APPROXIMATE EDGE OF WATER

NOTE:
 SEE SHEET SIX FOR LINE AND CURVE DATA TABLES.

APPROVED:
YORK COUNTY BOARD OF SUPERVISORS
 BY: *Al Maddalena*
 PLAT APPROVING AGENT
 DATE: *2/20/2003*

STATE OF VIRGINIA
COUNTY OF YORK
 IN THE CLERK'S OFFICE OF THE CIRCUIT COURT FOR
 THE COUNTY OF YORK, THE *14th* DAY OF *March*, 2003.
 THIS MAP WAS PRESENTED AND ADMITTED TO RECORD AS
 THE LAW DIRECTS AS INSTRUMENT NO. *030005772*.
 TESTE: *Lynn S. Jenkins* 10:16am
 CLERK
 BY: *Debi Bragdon, D.C.*
 FILE # 30858-4-PLAT